



# Rugby Road BRISLINGTON

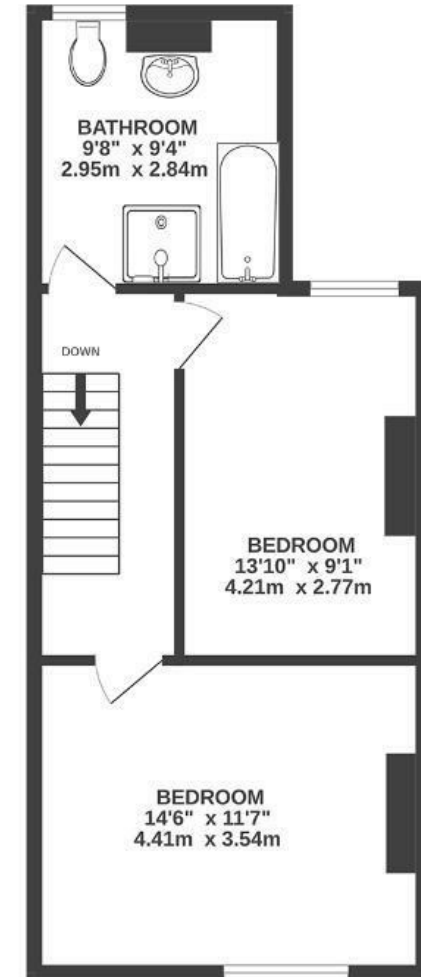
APPROXIMATE FLOOR AREA  
90 SQM / 964 SQFT



GROUND FLOOR



FIRST FLOOR



Boardwalk

# Rugby Road , BRISTOL



£385,000



2 Bedrooms



BS4 3NG



2 Bathrooms

*"We have absolutely adored living on Rugby Road for the past six years. We are very proud of the hard work and many hours we put into renovating and bringing this period property back to life; we have truly made this house our home and it has a special place in our hearts - we will be very sad to leave. We have made wonderful memories here which we will always look back on fondly; glorious summers in the garden where the sun lingers unspoilt all day, balloon-spotting, entertaining friends and family, growing our family, winter evenings snuggled by the log burner and evening strolls around the many parks and Nightingale Valley (sometimes topped off with a drink at Beeses!)."*

