

shepherds

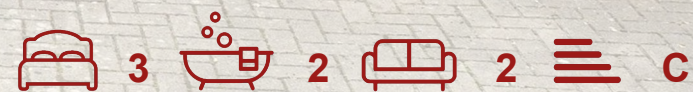
A better home
moving experience



23 Wisdom Drive

Hertford, SG13 7RF

Guide Price £650,000



23 Wisdom Drive

Hertford, SG13 7RF

SOLD BY SHEPHERDS - OPEN HOUSE SATURDAY 25th OCTOBER 11.00am - 1.00pm. Situated within a sought-after private gated development in the desirable SG13 postcode, this modern three-bedroom semi-detached home offers excellent living space, a private driveway and garage, and a generous rear garden with a useful outbuilding.

The ground floor features a stylish modern kitchen, a convenient downstairs WC, and a spacious living room with direct access to the garden-ideal for both relaxing and entertaining.

Upstairs, there are two well-proportioned double bedrooms and a comfortable single. The main bedroom benefits from its own en-suite shower room, while a contemporary family bathroom serves the remaining bedrooms.

Outside, the property enjoys a good-sized garden with an outbuilding offering great potential for use as a home office, gym, or studio.

Set within a private gated community, Wisdom Drive is just a short walk from Hertford town centre and Hertford East Station, offering a perfect blend of convenience, security, and modern living.

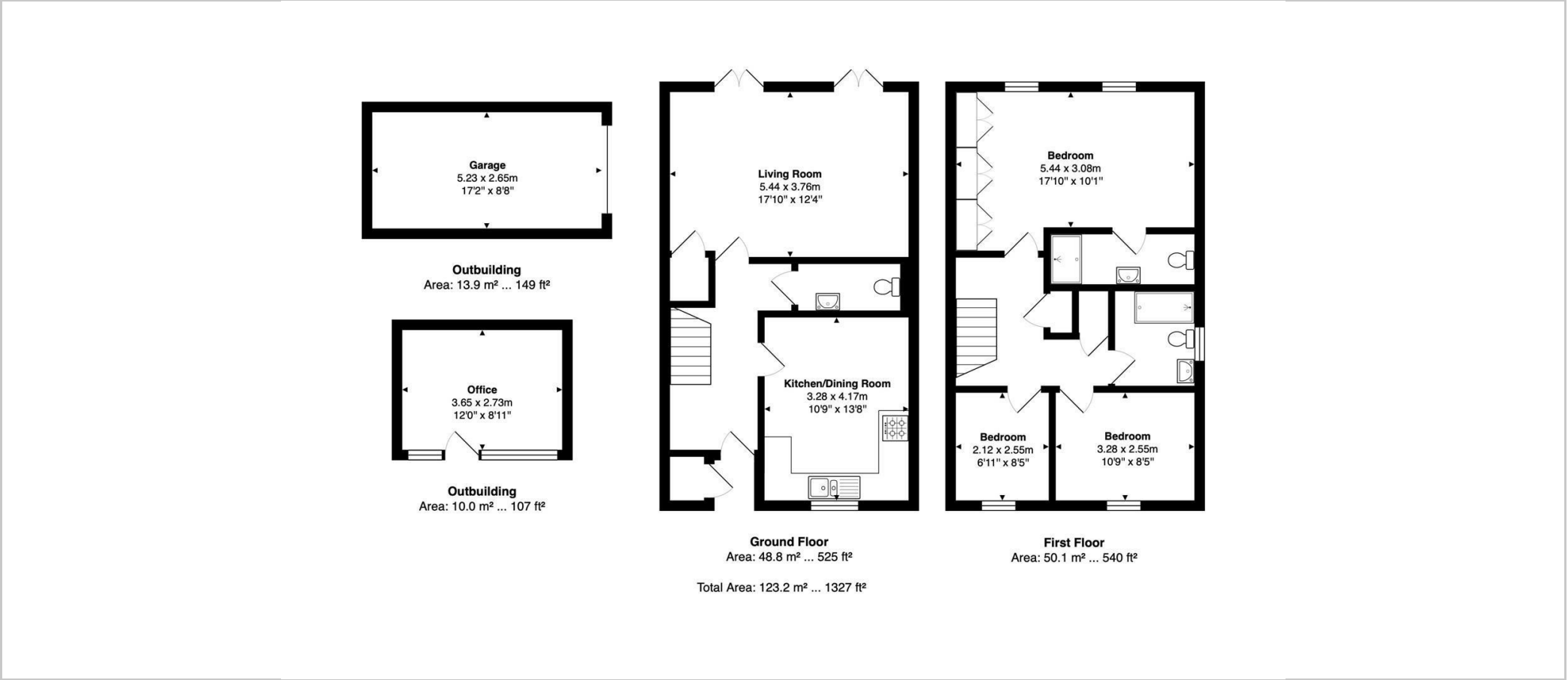




- Situated within a private gated development in the desirable SG13 postcode
- Three bedrooms including a spacious master with en-suite shower room
- Modern kitchen with contemporary fittings and finishes
- Large living room opening directly onto the rear garden
- Downstairs WC for added convenience
- Family bathroom serving the remaining bedrooms
- Private driveway and garage providing secure off-street parking
- Generous rear garden with excellent outdoor space for entertaining
- Outbuilding ideal for use as a home office, gym, or studio
- Short walk to Hertford town centre and Hertford East Station



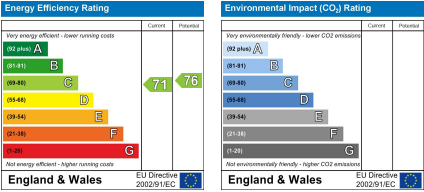
Floor Plan



Viewing

Please contact Shepherds of Hertford on 01992 551955 if you wish to arrange a viewing appointment for this property or require further information.

Energy Performance Graph



These particulars, whilst believed to be accurate are set out as a general outline only for guidance and do not constitute any part of an offer or contract. Intending purchasers should not rely on them as statements of representation of fact, but must satisfy themselves by inspection or otherwise as to their accuracy. No person in this firms employment has the authority to make or give any representation or warranty in respect of the property.

Riverside House, 6 Millbridge, Hertford, SG14 1PY
Tel: 01992 551955 Email: enquiries@shepherdsofhertford.co.uk