



# Nottingham Terrace

London, NW1

£4,983.33 per month  
(£1,150 per week)

Newly redecorated apartment located in a portered block on a private road in Marylebone, close to Baker Street Underground. The property benefits from 24 hour portage and parking.



# Nottingham Terrace

## London, NW1

- Smart Apartment in an Exclusive Portered Building
- 2 Bedrooms, 2 Bathrooms
- 24 hour porter, parking
- Set on a Private Road Adjacent to Regent's Park, and Right by Baker Street Underground



This luxurious two bedroom apartment has been modernised to the very highest standards, and benefits from portorage, parking and access to a secret garden in Regent's Park.

The property is set opposite Regent's Park moments away from Baker Street Underground Station and Marylebone High Street.

**Minimum Term:** (INSERT MANUALLY)  
**Deposit Required:** (INSERT MANUALLY)  
**Local Authority:** (INSERT MANUALLY)  
**Council Tax Band:** (INSERT MANUALLY)  
**EPC Rating:** D  
**Unfurnished**

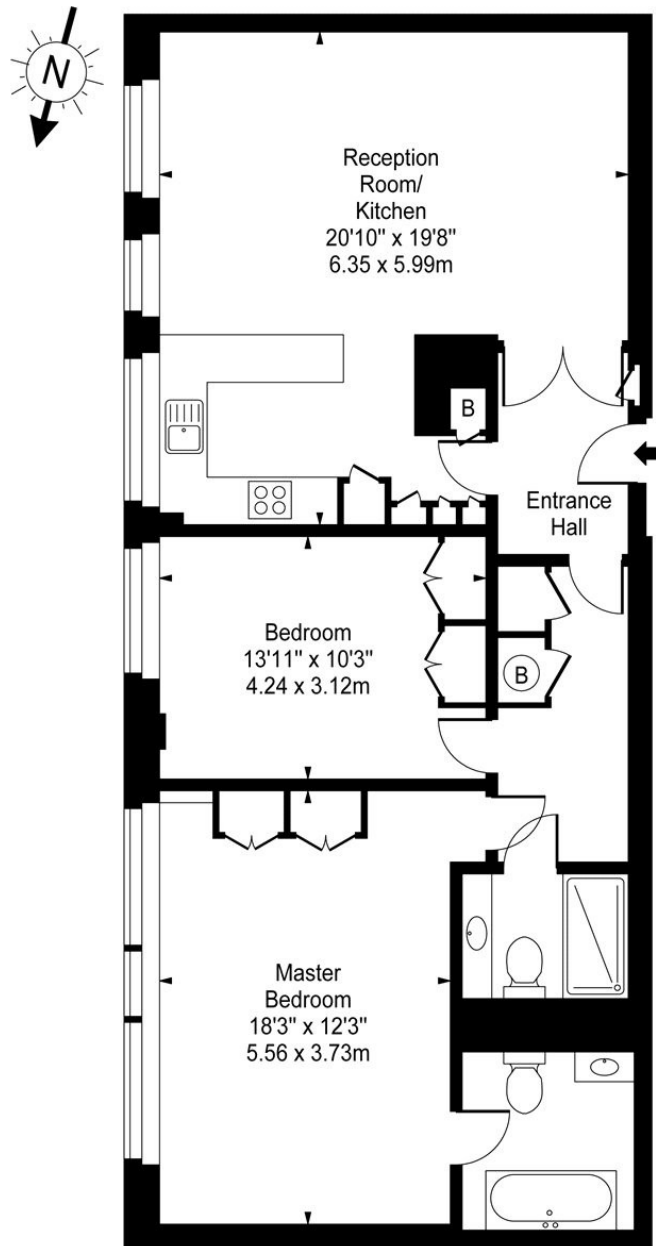
Energy Efficiency Rating		
	Current	Potential
Very energy efficient - lower running costs		
A (92-100)		
B (81-91)		
C (69-80)		
D (55-68)	67	74
E (39-54)		
F (21-38)		
G (1-20)		
Not energy efficient - higher running costs		
England, Scotland & Wales		EU Directive 2002/91/EC

### Chestertons St John's Wood Lettings

122 St John's Wood High Street  
 St John's Wood  
 London  
 NW8 7SG  
[lettings.stjohnswood@chestertons.com](mailto:lettings.stjohnswood@chestertons.com)  
 02030408622  
[chestertons.com](http://chestertons.com)

Additional tenant charges apply (fees apply to non-AST tenancies only)  
 Tenancy Agreement Fee: £300  
 References per Tenant/Guarantor: £60  
 Inventory check (approx. £100 – £250 inc. VAT)  
[chestertons.com/property-to-rent/applicable-fees](http://chestertons.com/property-to-rent/applicable-fees)

## Nottingham Terrace, NW1



Second Floor

Approx Gross Internal Area **996 Sq Ft - 92.53 Sq M**

For Illustration Purposes Only - Not To Scale

[www.goldlens.co.uk](http://www.goldlens.co.uk)

Produced for Chestertons

Ref. No. 001600

