



Bradley Gardens, W13

£500,000

****Offers In Excess Of****

A well presented and spacious two double bedroom first floor flat, competitively priced and offered to the market chain free with a long lease upon completion.

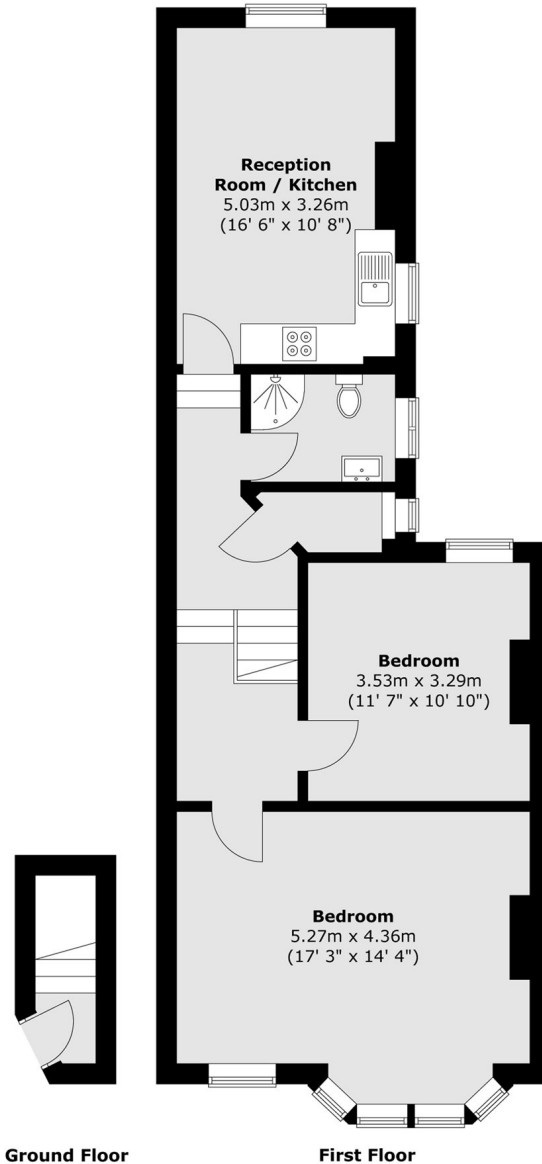


Offering over 700 sq ft, this very generously proportioned first floor flat is a must for early viewing. The accommodation comprises a large front bedroom, additional bedroom, family bathroom and kitchen/diner.

Ideally located for the Elizabeth Line (West Ealing) which provides unrivalled access to central London. An abundance of local parks to enjoy including Pitshanger park. A short walk to Ealing Broadway for all the shops & amenities on offer.

- Two Double Bedrooms • No Onward Chain • First Floor •
 - Elizabeth Line • Local Parks • Well Regarded Schools •
-





Total area (approx.) : 68.8 sq. m (740 sq. ft)

Robertson Smith & Kempson Ealing Sales
1 The Broadway, London,
W5 2NT
020 8840 7677
ealingsales@robertsonsmithandkempson.co.uk

Energy Rating: . We aim to make our particulars both accurate and reliable. However they are not guaranteed; nor do they form part of an offer or contract. If you require clarification on any points then please contact us, especially if you're traveling some distance to view. Please note that appliances and heating systems have not been tested and therefore no warranties can be given as to their good working order.