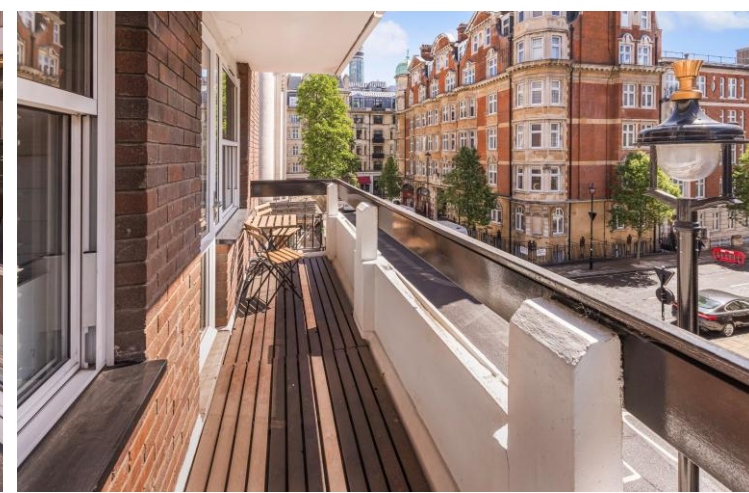




Weymouth Street
Marylebone, W1W

CHESTERTONS





Contemporary two-bedroom apartment superbly located in Marylebone close to transport and shopping on Marylebone High Street. Finished to a high standard, the property extends to approx. 850 square feet

- Modern & Bright Two Bed Apartment
- Reception, Kitchen, 2 Bedrooms, 2 Baths
- Superbly Located Close to Transport & Shopping
- Extends To Approx 850 Square Feet

£4,983.33 pcm

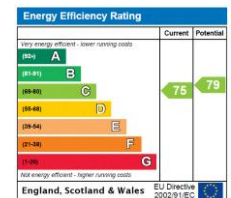
Additional tenant charges apply (fees apply to non-AST tenancies only)

Tenancy Agreement Fee: £300

References per Tenant/Guarantor: £60

Inventory check (approx. £100 – £250 inc. VAT)

chestertons.co.uk/property-to-rent/applicable-fees



Minimum Term: 12 Months
Deposit Required: Five weeks
Local Authority: Westminster
Council Tax Band: G
EPC Rating: C
Furnished

Chestertons Marylebone Lettings

20a Paddington Street

London

W1U 5QP

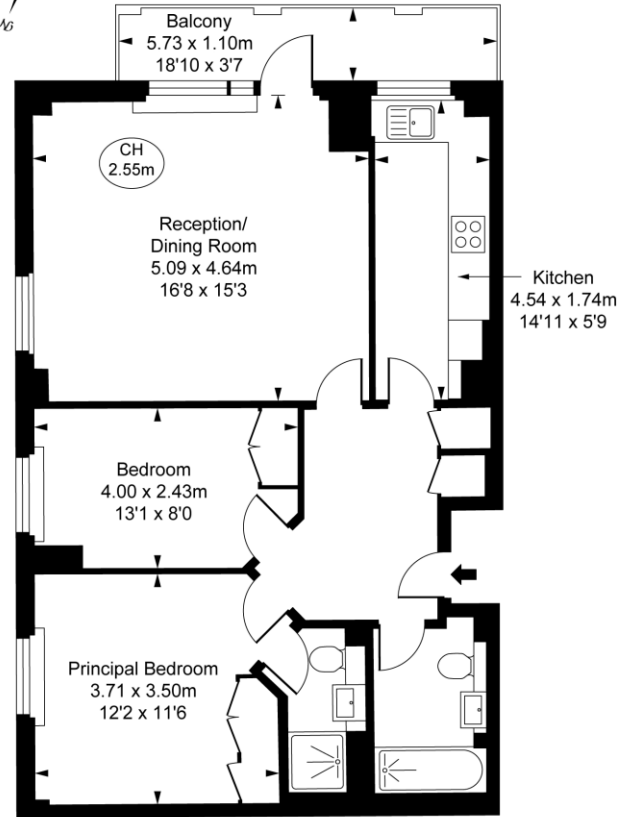
marylebonelettingsusers@chestertons.co.uk

chestertons.co.uk

Weymouth Street, W1W

Approximate Gross Internal Area
71.91 sq m / 774 sq ft

(CH = Ceiling Heights)



Second Floor

This plan is not to scale. It is for guidance and not for valuation purposes.
All measurements and areas are approximate only, and have been prepared in accordance with the current edition of the RICS Code of Measuring Practice.
© Fulham Performance

Chesterton UK Services Limited trading as Chestertons for themselves and for the vendor of this property whose agents they are, give notice that (i) these particulars do not constitute any part of an offer or contract, (ii) all statements contained within these particulars are made without responsibility on the part of Chestertons or the vendor, (iii) whilst made in good faith, none of the statements contained within these particulars are to be relied upon as a statement or representation of fact, (iv) any intending purchasers must satisfy themselves by inspection or otherwise as to the correctness of each of the statements contained within these particulars, (v) the vendor does not make or give either Chestertons or any person in their employment any authority to make or give representation or warranty whatsoever in relation to this property. Wide angle lenses may be used. ©Copyright Chestertons | Chesterton Global Ltd | Registered Office 5th Floor, The Lantern, 75 Hampstead Road, London, NW1 2PL Registered Company Number 05334580.



This paper is
100% recyclable