

11 Haddon Street, Manchester, M32 0JR



This attractive two-bedroom mid-terraced home is ideally positioned for convenient access to public transport, major motorway links, and the amenities of Manchester and Stretford. Steeped in character, the property showcases original period features, including high ceilings and an elegant corbel feature in the hallway. The inviting living room opens gracefully into the dining room via double doors, creating a natural flow through to the bright, fully fitted kitchen. Filled with natural light and offering direct access to the rear yard, the kitchen provides both practicality and charm. Upstairs, a spacious landing leads to a beautifully proportioned master bedroom boasting dual-aspect windows, along with a second generous double bedroom. The bathroom is fitted with a three-piece suite—bath, hand basin and WC—alongside a large separate shower cubicle. To the front, a small garden adds kerb appeal, and on-street permit parking is available. A GREAT FIRST TIME BUYERS HOME/INVESTMENT HOME.

Asking Price £260,000

ENTRANCE HALLWAY

Entering in through a wooden front door with stained glass panelling into a good sized hallway with side radiator, centre light fitting and stairs to the first floor. This period property has recently been redecorated and fitted with fresh new carpets.

FRONT RECEPTION ROOM

The lounge is generously proportioned and features a large UPVC double-glazed window complete with fitted blinds. A charming feature fireplace with hearth adds a warm, homely ambience to the space, which has recently been redecorated and newly carpeted. The room is complemented by a central light fitting and a wall-mounted radiator. Double doors open up into the dining area.

DINING ROOM

The dining room flows seamlessly from the living room, connected by double doors for easy access. A UPVC double-glazed window overlooks the rear of the property, and there is a practical under-stairs storage area. The room has been neutrally decorated and has wall panelling to the side wall with a new carpeted throughout.

KITCHEN

The kitchen offers a range of white gloss wall and base units, complemented by a stainless-steel sink and drainer, extractor fan, and an integrated cooker and hob. The walls are part tiled, and the room benefits from newly installed vinyl flooring. A UPVC double-glazed window with fitted blinds overlooks the yard, with another window to the side, while a side back door provides access to the rear and allows plenty of natural light to fill the space.

STAIRS AND LANDING AREA

The stairs and landing have been freshly repainted, with newly fitted modern carpets providing a cohesive flow throughout the home. The space is complemented by a central light fitting and a side UPVC double-glazed window with fitted blinds.

MASTER BEDROOM

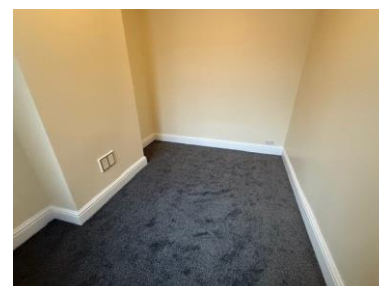
The master bedroom is exceptionally spacious, providing excellent family accommodation. Dual UPVC double-glazed front-facing windows with fitted blinds allows plenty of natural light into the room. Recently redecorated with new fitted carpets throughout, the space also features a large radiator and a central light fitting.

BEDROOM 2

The second double bedroom offers generous proportions and has been newly carpeted and tastefully redecorated. A UPVC double-glazed window with blinds overlooks the rear of the property, complemented by a central light fitting.

BATHROOM

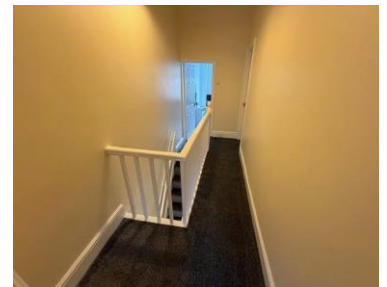
The bathroom includes a bath, hand basin and WC. It also has a separate

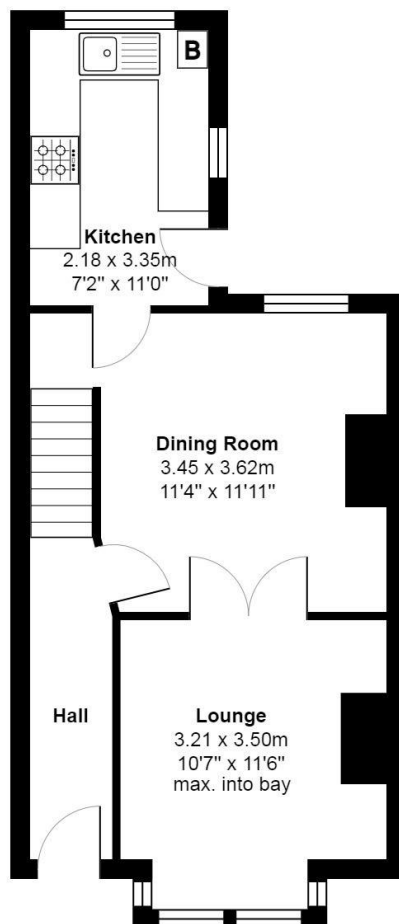


shower cubicle. The room is part tiled and features newly fitted vinyl flooring. A frosted UPVC double glazed window with blinds overlooks the rear and the room oozes light with a central light fitting and a wall-mounted radiator to complete the space.

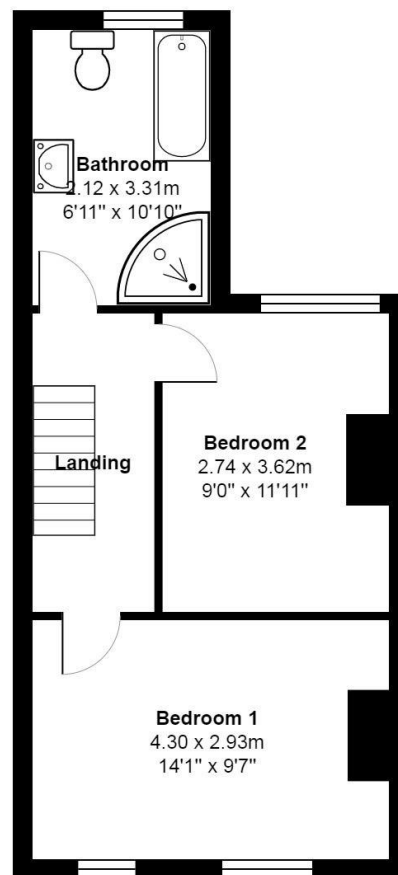
GARDEN

To the front of the property is a small garden which has a small wall, to the rear is a good sized yard. Parking is permit parking on the street.





Ground Floor



First Floor

Total Area: 73.2 m² ... 788 ft²

All measurements are approximate and for display purposes only