

A circular logo with a dark blue background. The text "Chimney Pots" is in a large, white, serif font. Below it, "ESTATE AGENTS" is in a smaller, white, sans-serif font. At the bottom, "YOUR HOME • OUR PASSION" is written in a white, sans-serif font, following the curve of the circle.

Chimney Pots
ESTATE AGENTS

YOUR HOME • OUR PASSION

A photograph of a three-story red brick building with white window frames and a white front door. The building is situated on a street with a paved area in the foreground and a grassy area with a tree to the left. A green car and a silver car are parked on the right. The sky is blue.

Amberley Court, North Square, Knowle
Asking Price £250,000



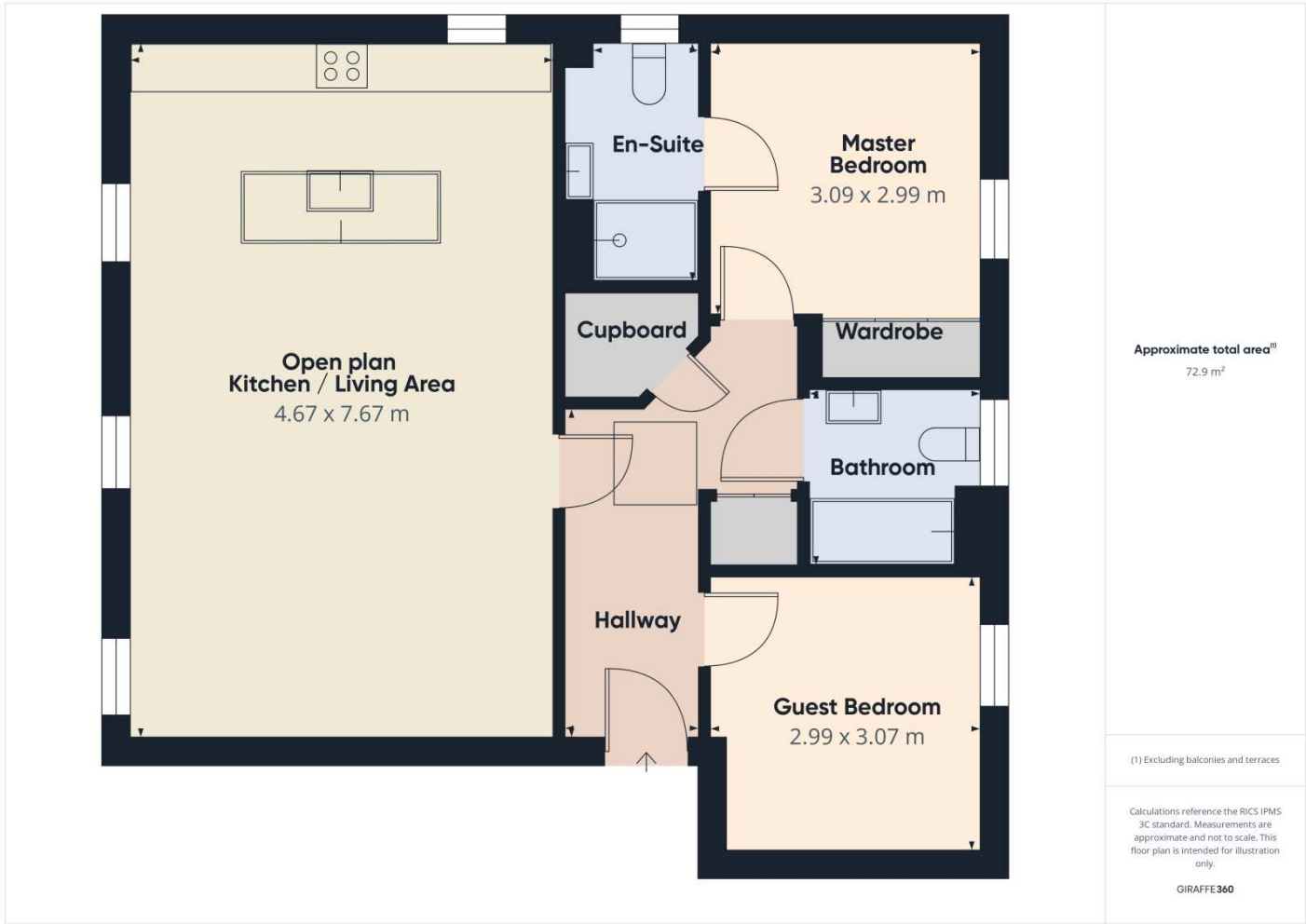
Stylish first-floor apartment, extensively modernised
 Two double bedrooms, including principal bedroom with en-suite
 Spacious open-plan kitchen/living room measuring 25'
 Family bathroom
 Allocated and visitors parking, with communal garden
 An exceptional property set in a beautiful location

This beautifully presented purpose-built first-floor apartment has been thoughtfully modernised throughout and offers stylish, well-proportioned accommodation. The property features an inviting entrance hallway, a superb 25' open-plan kitchen/living room fitted with a high-quality 'Windsor' style kitchen and granite worktops, two double bedrooms – the principal benefiting from fitted wardrobes and an en-suite shower room – plus a further modern bathroom.

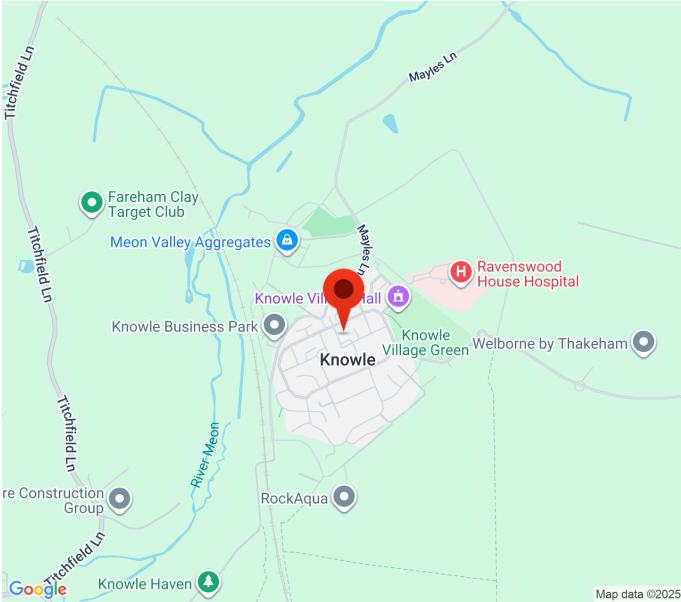
Outside, the development enjoys a communal garden to the rear, an allocated parking space (No. 3), and additional visitor parking. Secure video entry access adds peace of mind. Viewing is strongly recommended to fully appreciate the high standard of finish on offer.



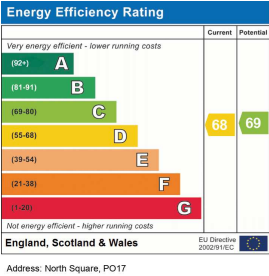
Floor Plan



Area Map



Energy Performance Graph



These particulars, whilst believed to be accurate are set out as a general outline only for guidance and do not constitute any part of an offer or contract. Intending purchasers should not rely on them as statements of representation of fact, but must satisfy themselves by inspection or otherwise as to their accuracy. No person in this firms employment has the authority to make or give any representation or warranty in respect of the property.