



**Guide Price**  
**£245,000**

**Freehold**

2x  1x  1x 

**Mount Field,  
Queenborough, Kent,  
ME11**

**OVER 60?**

Secure this property  
for up to **59% less!**

*Wards*  
Helping you move forwards



## Main features

- Perfect for first time buyers
- Modern feel throughout
- Newly decorated kitchen with built in oven and hob
- Off road parking with driveway which is unusual in this location
- Great location close to local schools, shops plus the train station

## Accommodation

### GROUND FLOOR

Entrance Porch  
 Lounge/Diner: 15'4 x 12'6 (4.68m x 3.81m)  
 Kitchen: 9'6 x 8'1 (2.90m x 2.47m)  
 Garden Room: 11'5 x 7'6 (3.48m x 2.29m)

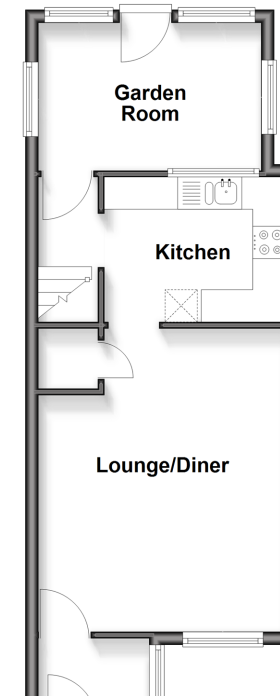
### FIRST FLOOR

Landing  
 Bedroom 1: 12'6 x 8'7 (3.81m x 2.62m)  
 Bedroom 2: 12'4 x 7'2 (3.76m x 2.19m)  
 Bathroom: 6'9 x 6'4 (2.06m x 1.93m)

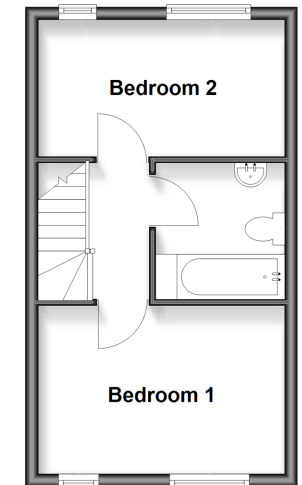
### OUTSIDE

Front Garden  
 Off Road Parking  
 Rear Garden

### Ground Floor



### First Floor



Call Sheerness - 01795 664651 ■ [wardsokent.co.uk](http://wardsokent.co.uk)

■ Through a Homewise Home For Life Plan people aged 60+ can secure this property for up to 59% less, by purchasing a Lifetime Lease



11635956/20260509/DS/JLS