



Pinkmove

Pontfaen Road

Offers in the region of £220,000

- Three bedroom bungalow
- Spacious living/dining room
- Enclosed rear garden
- Central hallway layout
- Additional separate lounge/sitting room
- Scope to modernise
- EPC Rating: Awaited



Pinkmove



Pinkmove

01633 746088
team@pinkmove.co.uk



About the property

This three-bedroom bungalow offers well-proportioned and versatile accommodation, ideal for a range of buyers.

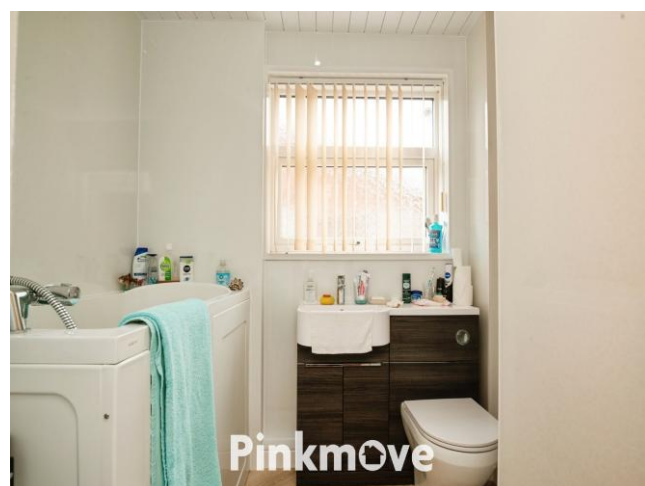
The property is accessed via a central hallway which provides convenient access to all principal rooms. To the rear, a generous living/dining room extends to over 23 ft in length, creating a bright and spacious area perfectly suited for both relaxing and entertaining.

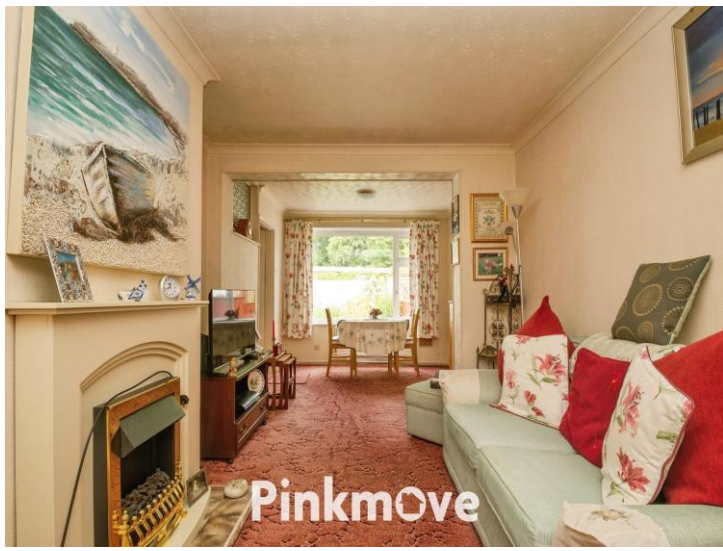
The kitchen is positioned to the rear of the property and is fitted with a range of wall and base units, offering space for appliances and potential for modernisation to suit individual tastes.

There are three bedrooms in total, including a well-sized double bedroom, a further comfortable second bedroom and a single bedroom which could alternatively be used as a home office or study. All bedrooms are accessed from the hallway.

The accommodation is completed by a shower room fitted with a walk-in shower, WC and wash basin.

Externally, the property benefits from a good-sized enclosed rear garden, mainly laid to lawn with a variety of mature shrubs and planting. A patio area and useful garden storage enhance the outdoor space, making it ideal for relaxing or entertaining.





Accommodation

Lounge/Dining Room

Kitchen

Lounge

Bedroom 1

Bedroom 2

Shower Room

Bedroom 3

01633 746088

team@pinkmove.co.uk

Pinkmove

Floorplan



Total floor area 62.5 sq.m. (673 sq.ft.) approx

This floor plan is for illustrative purposes only. It is not drawn to scale. Any measurements, floor areas (including any total floor area), openings and orientation are approximate. No details are guaranteed, they cannot be relied upon for any purpose and they do not form part of any agreement. No liability is taken for any error, omission or misstatement. A party must rely upon its own inspection(s). Powered by www.localagent.com

Pinkmove

Important Information

Note while we endeavour to make our sales details accurate and reliable, if there is any point which is of particular interest to you, please contact the office and we will be pleased to confirm the position for you. We have not personally tested any apparatus, equipment, fixtures, fittings or services and cannot verify they are in working order or fit for their purposes. Nothing in these particulars is intended to indicate that carpets or curtains, furnishings or fittings, electrical goods (whether wired or not). Gas fires or light fittings or any other fixtures not expressly included form part of the property offered for sale. This computer generated Floorplan, if applicable, is intended as a general guide to the layout and design of the property. It is not to scale and should not be relied upon for dimensions. Tenure: We cannot confirm the tenure of the property as we have not had access to the legal documents. The buyer is advised to obtain verification from their solicitor or surveyor.

Peter Alan Limited is registered in England and Wales under company number 2073153. Registered Office is Cumbria House, 16-20 Hockliffe Street, Leighton Buzzard, Bedfordshire, LU7 1GN. VAT Registration Number is 500 2481 05. For activities relating to regulated mortgages and non-investment insurance contracts, Peter Alan Limited is an appointed representative of Connells Limited which is authorised and regulated by the Financial Conduct Authority. Connells Limited's Financial Services Register number is 302221. Most buy-to-let

