

PINEWOOD ROMAN ROAD  
LITTLE ASTON PARK  
SUTTON COLDFIELD  
B74 3AA

  
ASTON KNOWLES  
CHARTERED SURVEYORS AND ESTATE AGENTS



## ACCOMMODATION

An exquisite six-bedroom residence situated on the prestigious Roman Road.

### Ground Floor:

Reception hall  
Drawing room  
Dining room  
Study  
Open plan kitchen/breakfast/family room  
Cinema room  
Boot room/Utility  
Guest cloakroom

### First Floor:

Principal bedroom with en suite bathroom and dressing room  
Guest bedroom with en suite shower room  
Two further bedrooms  
Family bathroom  
Additional two-bedroom guest suite with shower room

### Outside:

Integral double garage  
Gated driveway  
Landscaped garden

EPC Rating: C

These particulars are intended only as a guide and must not be relied upon as statements of fact. Your attention is drawn to the Important Notice on the last page of the text.



## Situation

The property is situated on the prestigious Little Aston Park estate. This private estate comprises of immaculately presented substantial houses, which are enhanced by positive restrictive covenants, ensuring that there is a carefully controlled density of property layout. Little Aston Park is home to the highly regarded Little Aston Golf Club and some of the finest houses in the West Midlands.

Day to day amenities can be found in Streetly village with a local supermarket and a selection of restaurants. In nearby Mere Green there are M&S, Waitrose and Sainsbury's supermarkets together with an array of restaurants and coffee shops in the newly developed Mulberry Walk. In Sutton Coldfield town centre there is a comprehensive range of shops and restaurants within the Gracechurch Shopping Centre. About 1 mile away is Sutton Park, one of Europe's largest urban parks, offering great scope for walking, golf and a variety of outdoor pursuits.

Little Aston is well placed for access to regional centres and the motorway network. Birmingham is only 10 miles distant and the M6 Toll (T5) is just 4 miles away giving fast access to the M6 and M42.

Schooling in the area includes Bishop Vesey's Grammar School, Sutton Coldfield Grammar School for Girls, Highclare School, Holland House Junior School, St Joseph's Primary School and Arthur Terry School. Purchasers are advised to check with the Council for up to date information on school catchment areas.

## Description of Property

Pinewood offers exceptional family living on one of the most well-regarded roads in the West Midlands. Occupying a private position on a stunning plot of approximately 0.5 acres on Little Aston Park, the six-bedroom, two-storey family home has recently been fully renovated to the highest of standards.

The present owners of this stunning residence have combined their desire for beautiful contemporary decor with exceptional living space to offer a home of outstanding finish and attention to detail.

### Specifications

- Water-based underfloor heating throughout with individual digital thermostats in each room
- Honed limestone flooring throughout the reception hall and open plan kitchen
- Luxury deep pile carpet throughout reception/entertainment areas and to the first-floor accommodation
- Solid walnut doors internal doors
- The Sash Window Company bespoke wooden windows with chrome fittings and orangery
- Remote-controlled gas fireplace to living room
- Luxury sanitary ware individually sourced to bathroom and en suites, featuring Grespania tiles, Porter vanity units, Imperial sanitary ware and nickel Samuel Heath taps, shower heads, valves, and toilet roll holders
- Home automation system with ceiling speakers in most rooms
- Sonus audio system
- Extensive LED lighting system
- Comprehensive intruder alarm, CCTV system and extensive external security lighting
- Cinema system installed by Jooceid with Sony projector and 110" inch screen and lights controlled with a Crestron remote

Beautifully finished, both inside and out, the property is approached through wrought iron gates providing access into a block paved driveway with ample parking for numerous vehicles.

Double opening bespoke oak painted front entrance doors lead into the spacious and light reception hallway, leading off to the main reception areas and to the first-floor accommodation via the stunning carpeted oak staircase, as well as providing access to a guest cloakroom.

Double doors with large glass panes open into the spacious drawing room. This light and beautiful space is ideal for receiving and entertaining friends and family, with its modern atmosphere that is highlighted by the incredible gas-fire fireplace in the centre of the room. Double French doors offer views of the garden and lead out to the paved terrace.

The formal dining room is located next to the drawing room and looks out over the rear garden.

The study is a wonderful place to withdraw from hectic days for a while and the double French doors leading out the rear garden also fill the room with natural light, boosting productivity, forming an ideal place for working from home.

The open plan kitchen/breakfast/family room has been finished to the highest standards and forms the heart of the home. With its high-gloss white marble countertops and complementary handmade wall and floor units, the kitchen is timeless and has a beautiful contemporary vibe. Perfectly designed to provide highly functional space the kitchen has two islands, one lending to workspace with an inset ink and hot water tap the other with a curved finish to allow for seating and sunken ice sink to keep drinks chilled whilst entertaining.

A further sink can be found in the space that offers contrasting Walnut finished cabinetry, this area is designed for coffee making and ideally lends itself additionally as a bar. With cupboards that can be pulled out to conceal the space the kitchen can look totally seamless if so desired.

Leading on from the kitchen is space for an informal dining area, ideal when dining with close friends and family, with a wonderful view of the rear garden.

At the other end of the open plan space is an orangery style extension: a perfect lounge area or family room. This beautifully bright space enjoys natural light from the full-size windows that overlook the rear garden and greenery beyond, perfect for taking after-dinner drinks and continuing conversation.

A wonderful feature of the house is the secret mirrored door from the kitchen leading into the recent extension at the side of the house. A spacious cinema room offers a luxury home theatre space with 110" screen and stunning high-resolution equipment and surround sound. The cinema room is the perfect place for big family movie nights, major sporting events and the ultimate gaming experience.

The recently completed extension also houses the stairs to a two-bedroom guest suite and shower room, which has a self-contained entrance from the front of the property.

The first-floor accommodation in the main house provides the modern bedrooms and bathrooms. The spacious first-floor gallery style landing offers views of the front of the property and features a utility room complete with work surface and appliance space.

The spacious principal bedroom with rear aspect features full height French doors with views over the rear gardens. A generous bespoke dressing room has a central island and generous hanging space that further leads into the en suite shower room with stunning white suite featuring marble details, his and hers sink, and a stunning walk-in waterfall shower.

The first-floor guest bedroom with front aspect features an en suite shower room. There are two further bedrooms, as well as a family bathroom with separate shower and freestanding bath. All bathrooms share a similar bespoke theme with white sanitary ware and marble detailing.

The separate guest suite is accessed via the staircase located next to the kitchen and cinema room and offers additional privacy for guests that require it. The suite consists of a landing area, two bedrooms with front aspect, and a separate shower room. This completes the first-floor accommodation.

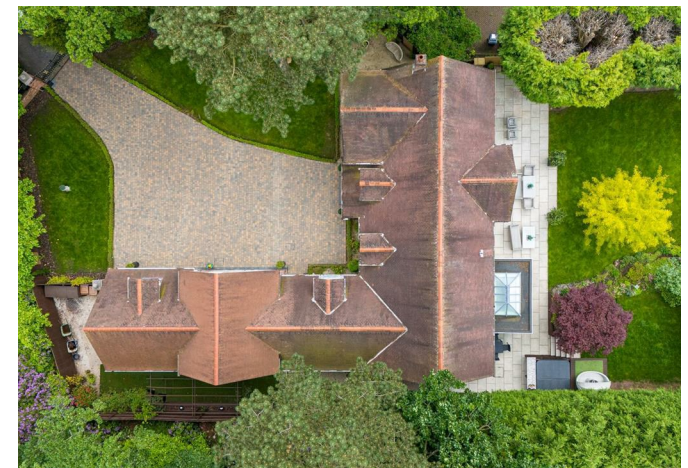
This bespoke property has been finished to the most exacting standards and benefits from modern technology and efficiency throughout. An internal inspection is strongly advised to appreciate the quality and level of finish included in every room.

## Gardens and Grounds

The integral garage and wide brick-paved driveway provide ample space for parking, and the property features a beautiful landscaped and private garden to the rear. With a light stone patio terrace running across the rear of the house, the area is perfect for al fresco dining and soaking up the sun. Additionally, there is a raised decked area with whirlpool hot tub and granite bar, ideally for evenings with friends and entertaining.

To the side of the house an additional seating area set under a pergola which has been formed to make the most of the morning sun.

A gardener's WC and boiler store are also accessible from the rear/side of the house.





### Distances

Sutton Coldfield 3.2 miles  
 Birmingham 9.8 miles  
 Lichfield 7.9 miles  
 M6 Toll (T3) 7.9 miles  
 Birmingham International/NEC 19.1 miles  
 (Distances approximate)

These particulars are intended only as a guide and must not be relied upon as statements of fact. Your attention is drawn to the Important Notice on the last page of the text.

### Services

We understand that mains, gas, water and electricity are connected.

### Fixtures and Fittings

Only those items mentioned in the sales particulars are to be included in the sale price. All others are specifically excluded but may be available by separate arrangement.

### Directions

From Sutton Coldfield Town Centre take the A5127 towards Lichfield at Four Oaks roundabout take the second exit onto the A545 Walsall Road, fork left onto the B4151 Streetly Lane. At the roundabout, take the third exit onto Roman Lane continue on Roman Road.

### Terms

Tenure: Freehold  
 Local authority: Lichfield District Council 01543 308000  
 Tax band: H  
 Average area broadband: 150 Mbps

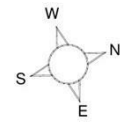
### Viewings

All viewings of Pinewood, Roman Road are strictly by prior appointment with agents Aston Knowles 0121 362 7878.

### Disclaimer

Every care has been taken with the preparation of these particulars, but complete accuracy cannot be guaranteed. If there is any point which is of particular interest to you, please obtain professional confirmation. Alternatively, we will be pleased to check the information for you. These particulars do not constitute a contract or part of a contract. All measurements quoted are approximate. Photographs are reproduced for general information, and it cannot be inferred that any item shown is included in the sale.  
 Photographs taken: May 2024  
 Particulars prepared: May 2024

### Pinewood, Roman Road, Sutton Coldfield



### FOR ILLUSTRATIVE PURPOSES ONLY - NOT TO SCALE

The position & size of doors, windows, appliances and other features are approximate only.

--- Denotes restricted head height

© ehouse. Unauthorised reproduction prohibited. Drawing ref. dig/8395555/MKB

Energy Efficiency Rating		Current	Potential
Very energy efficient - lower running costs			
(92-100) <b>A</b>			
(81-91) <b>B</b>			
(69-80) <b>C</b>			
(55-68) <b>D</b>			
(39-54) <b>E</b>			
(21-38) <b>F</b>			
(1-20) <b>G</b>			
Not energy efficient - higher running costs			
<b>England &amp; Wales</b>		74	78
EU Directive 2002/91/EC			

Every care has been taken with the preparation of these Particulars, but complete accuracy cannot be guaranteed. If there is any point, which is of particular importance to you, please obtain professional confirmation. Alternatively, we will be pleased to check the information for you. These Particulars do not constitute a contract or part of a contract. All measurements quoted are approximate. Photographs are reproduced for general information and it cannot be inferred that any item shown is included in the sale.

8 High Street, Sutton Coldfield, B72 1XA

0121 362 7878 • enquiries@astonknowles.com • www.astonknowles.com