



31 Warwick Road | Earls Court | London | SW5 9UL

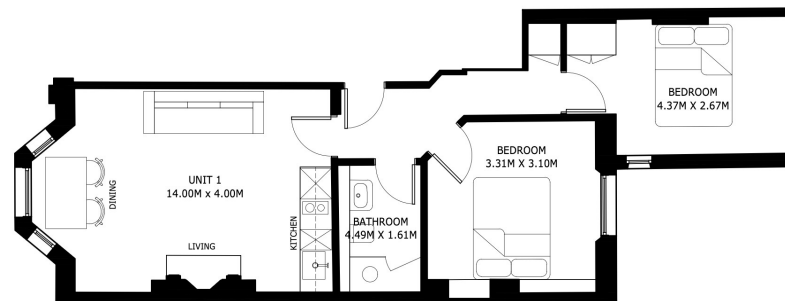
£3,200 Per Month

SÉJOUR

31 Warwick Road | Earls Court
London | SW5 9UL

Be the very first to live in this exceptional brand-new one-bedroom apartment, finished to an impeccable standard and beautifully furnished in a contemporary style throughout.

- Brand-new one-bedroom apartment
- Close to the station with excellent transport links
- Bright and airy interiors throughout
- Rare opportunity to be the first resident
- Beautifully furnished in a contemporary style
- Lower ground entrance throughout



UNIT 1

GROUND FLOOR
GROSS INTERNAL AREA = 53.70 SQ.M.
*SIZES AND DIMENSIONS ARE APPROXIMATE, ACTUAL MAY VARY.

Energy Efficiency Rating		Current	Potential
Very energy efficient - lower running costs			
(92 plus)	A		
(81-91)	B		
(69-80)	C		
(55-68)	D	68	75
(39-54)	E		
(21-38)	F		
(1-20)	G		
Not energy efficient - higher running costs			
England & Wales		EU Directive 2002/91/EC	

Council Tax Band A
EPC Rating D

10 Cromwell Pl
South Kensington
London
SW7 2JN
020 3865 0611
lettings@cityrelay.com