



# Print Works House

83 Great Titchfield Street, W1W

£8,645 per month  
(£1,995 per week)

A two bedroom property found on the first floor of this recently renovated conversion, benefitting from wooden flooring, exposed brickwork and ample storage. Contemporary furnishings throughout and bright outlook on to Great Titchfield Street.

**CHESTERTONS**



# Print Works House

83 Great Titchfield Street, W1W

•

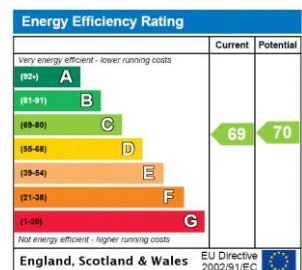


Stunning two bedroom apartment on the first floor of a well maintained period conversion on Great Titchfield Street. Located in Printworks House, a boutique development of three flats.

The apartment is finished to a high standard and benefits from hard wood flooring, exposed brick and metal beams. There is an abundance of natural light given the large living room windows and high ceilings. With two double bedrooms, bathroom and separate WC, open plan kitchen dining space- the space is great for entertaining.

Excellent transport links from Great Portland Street, Goodge Street,

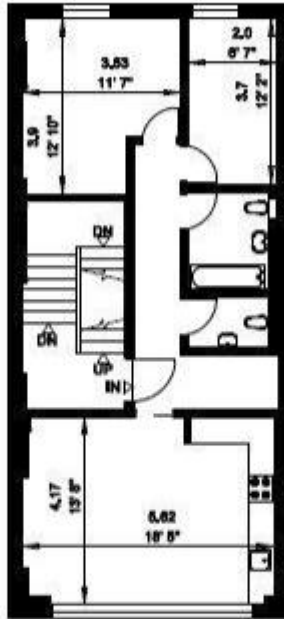
**Minimum Term:** 12 months  
**Deposit Required:** £11,970.00  
**Local Authority:** City of Westminster  
**Council Tax Band:** F  
**EPC Rating:** C  
**Furnished**



### Chestertons Covent Garden Lettings

196 Shaftesbury Avenue  
 Covent Garden  
 London  
 WC2H 8JF  
 coventgardenlettingsusers@chestertons.co.uk  
 02030408400  
 chestertons.co.uk

Additional tenant charges apply (fees apply to non-AST tenancies only)  
 Tenancy Agreement Fee: £300  
 References per Tenant/Guarantor: £60  
 Inventory check (approx. £100 – £250 inc. VAT)  
 chestertons.co.uk/property-to-rent/applicable-fees



**FIRST FLOOR**

**FLAT 1**

**Gross Internal Area =  
61 sq. metres  
662 sq. feet**

