



Fulham High Street, SW6

£569,000

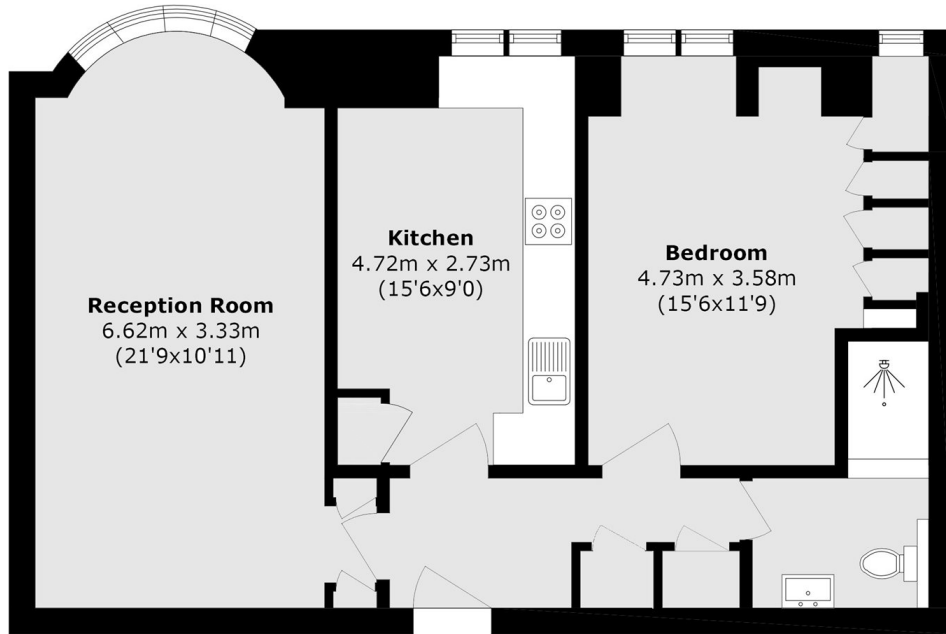
Located on the first floor of this exceptionally well-run, portered, and centrally located building on Fulham High Street, this charming apartment is well-proportioned and has an abundance of light throughout.

Located just moments from the green open spaces of Bishops Park and the River Thames. An array of independent shops, bars, and popular restaurants are on your doorstep along the high street and nearby Parsons Green.

Features

- Lift Access
- Well-Proportioned
- Secure Development
- Porter
- Bay Window
- Close To Bishops Park

Fulham High Street, London, SW6



Total area (approx.): 63.4 sq. m (682.4 sq. ft)