

Property ref: 774

Bath Road, Reading, RG30 2BL

£1,050 PCM

HASLAM'S
Lettings



A well appointed apartment within a purpose built block, conveniently situated off the Bath Road with easy access to town centre and Junctions 11 and 12 of the M4 motorway.

Reading Borough Council Tax Band B.

Water supply: MAINS

Drainage info: MAINS

Electricity supply: MAINS

Broadband/Mobile Info: Connections available. For an indication of specific speeds and supply of Broadband and Mobile, we advise applicants go to the Ofcom website Broadband and Mobile Coverage Checker.

- Spacious open-plan lounge/kitchen with a laminate floor
- Fitted kitchen including appliances
- Double bedroom with a wardrobe
- Bathroom with shower over the bath; Electric heating
- Off Street Parking; EPC Rating D
- Furnished; Managed by HASLAM'S

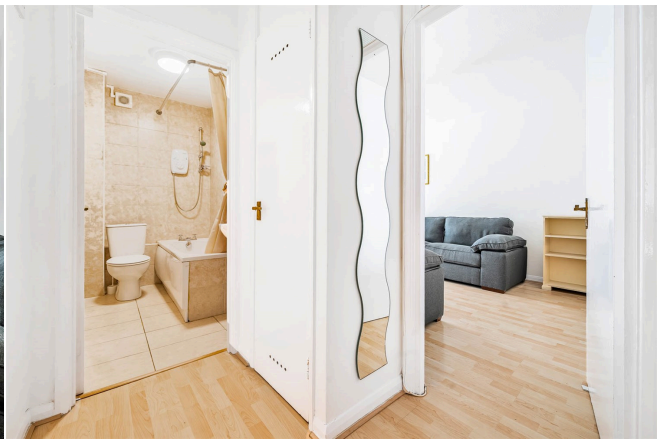
Available 31/03/2026

*Fees For Assured Shorthold Tenancies: when you rent a property from us you will be required to pay a sum equivalent to one weeks' rent for a holding deposit. Upon successful application, this amount will be off set against your first months' rent. You will also be required to pay a security deposit equivalent to 5 weeks' rent which will be held and protected in line with Deposit legislation. For more information about our fees please visit: www.haslams.net
Fees for all other tenancies (Non Housing Act Tenancies / Company Lets): when you rent a property from us we will charge you a one-off fee per property. This charge is the equivalent of 15 days of the monthly rental charge (+VAT) with a minimum fee of £450 (inc.VAT) up to a maximum of £650 (inc.VAT). Other fees may apply depending on your circumstances.

0118 960 1055

lettings@haslams.net www.haslams.net

Haslams Estate Agents Ltd, 159 Friar Street, Reading, Berkshire, RG1 1HE



First Floor

Approx. 47.1 sq. metres (506.7 sq. feet)



Total area: approx. 47.1 sq. metres (506.7 sq. feet)

This floorplan is for illustrative purposes only and is not to scale. The total area includes all the areas shown.
Plan produced using PlanUp.