

Thelwall New Road, Thelwall, Warrington WA4 2HR

Offers Over £510,000

🛏 3 🚿 3 🛋 2



An immaculately presented three-bedroom detached home in a sought-after location

This beautifully maintained and thoughtfully extended three-bedroom detached property offers spacious, versatile living in one of the area's most desirable locations. Perfectly suited for a growing family, the property features generously proportioned rooms throughout and has been lovingly cared for.

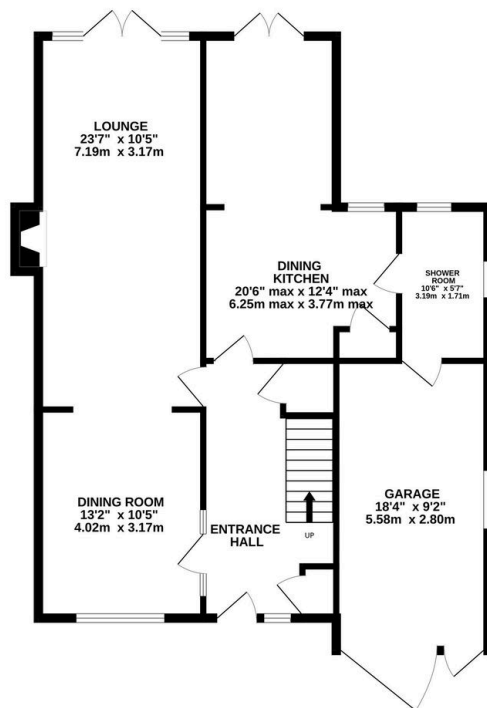
The property boasts a large, private rear garden—ideal for entertaining or relaxing in a peaceful setting. Located close to reputable schools and a range of local amenities, this lovely home combines comfort, space, and convenience.

Internal viewing is highly recommended to fully appreciate what this impressive detached property has to offer.

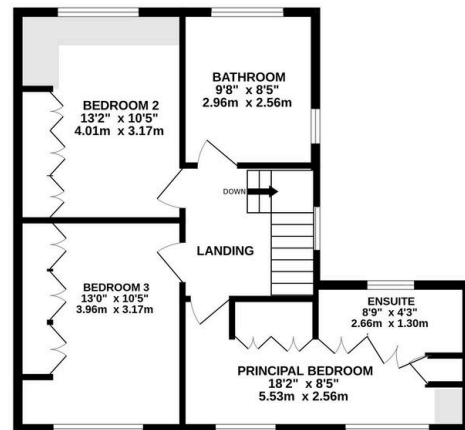
Key Features

- NO ONWARD CHAIN
- Three double bedrooms, one en-suite
- Lounge with French doors leading out onto the large, landscaped rear garden
- Driveway parking for several vehicles
- Close to local Schools and Shops
- Extended detached family home
- Family bathroom and downstairs shower room
- Large, private rear garden which is immaculately well tended and stocked with a variety of plants and trees
- Garage with Utility
- Internal viewings highly recommended

GROUND FLOOR
960 sq.ft. (89.2 sq.m.) approx.



1ST FLOOR
583 sq.ft. (54.1 sq.m.) approx.



TOTAL FLOOR AREA: 1543 sq.ft. (143.4 sq.m.) approx.

Whilst every attempt has been made to ensure the accuracy of the floorplan contained here, measurements of doors, windows, rooms and any other items are approximate and no responsibility is taken for any error, omission or mis-statement. This plan is for illustrative purposes only and should be used as such by any prospective purchaser. The services, systems and appliances shown have not been tested and no guarantee as to their operability or efficiency can be given.

Made with Metropix ©2025