



Watermouth Cottage Watermouth, Berrynarbor

Offers Over £525,000



Watermouth Cottage Watermouth

Berrynarbor, Ilfracombe

Secluded four-bed stone cottage with period features, modern kitchen, conservatory, stylish bathrooms, parking, private garden, woodland views, near coast path and bus links. Ideal family home.

Council Tax band: F

Tenure: Freehold

EPC Energy Efficiency Rating: E

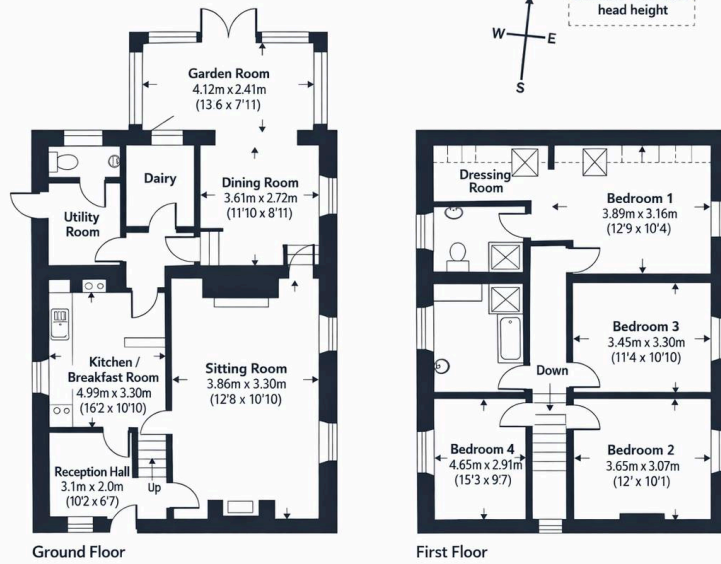
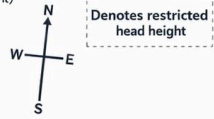
EPC Environmental Impact Rating: E

- Covered and off-road parking
- Conservatory with garden access and natural light
- Stylish modern bathrooms with walk-in showers and herringbone flooring
- Charming stone exterior and period features
- Mature countryside setting with picturesque surroundings
- Home office or studio space with natural light
- Decorative stained glass front door
- A secluded stone cottage surrounded by woodland
- Steeped in history, character, and space to breathe.
- Extensive Private Gardens
- Ideal location to relax and enjoy nature
- Close to South West Coast Path
- Bus Station at the end of the road
- Ideal family home or holiday let





Approx. Gross Internal Floor Area
180.1 sq m / 1938 sq ft (Excludes Restricted Head Height)



For identification purposes only. Not to scale.

rightmove



You can include any text here. The text can be modified upon generating your brochure.



Aspire Estates

Aspire Properties, Wira Business Park Ring Road - LS16 6EB

0113 8875079 • estatesales@aspirepropertygroup.co.uk • www.aspirepropertygroup.co.uk/