



Lincoln Avenue, TW2

£815,000

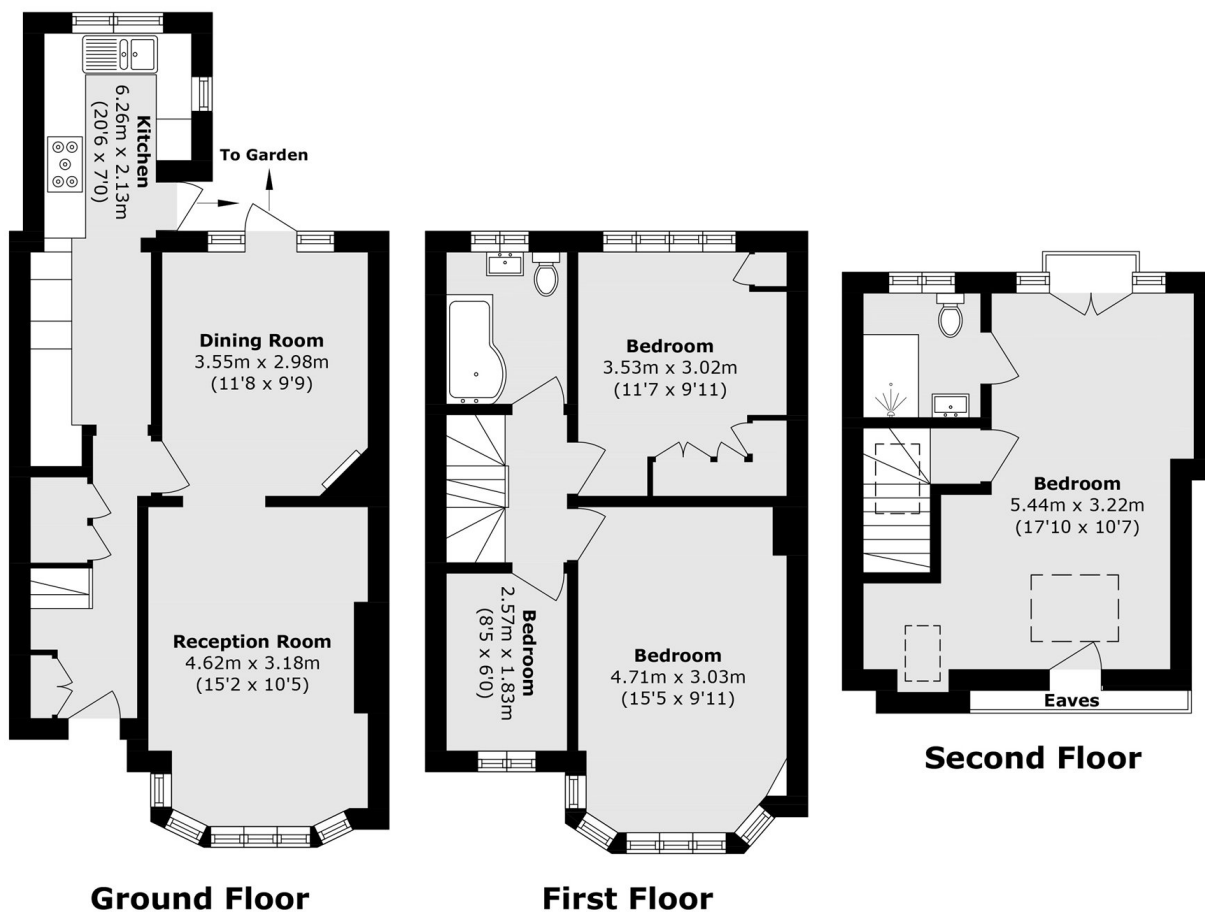
Backing onto Crane Park is this four bedroom 1930's house that is perfect for the growing family. With potential to extend on the ground floor STPP, and a beautiful secluded garden this property is not to be missed.

Lincoln Avenue is a fantastic residential street in a popular area of Twickenham. The property is close to Kneller Gardens Park, the River Thames and Whitton mainline station with its fast trains into London Waterloo. There are excellent state and private schools nearby (eg. Waldegrave Girls, Archdeacon, St. James and The Mall), two royal parks and many pleasant, green open spaces.

Features

- Four Bedrooms
- Mid Terrace
- Potential To Extend STPP
- Fantastic Location
- Overlooking Crane Park
- Two Bathrooms

Lincoln Avenue, Twickenham, TW2



Total area (approx.): 107.0 sq. m (1151.7 sq. ft)
(Excluding Eaves)