



Albany Close

Bexley
DA5 3ES

Freehold

Well presented 3 bedroom semi detached bungalow
Off street parking to the front
Close to Albany Park station
Convenient for local shops, parks and schools
Well presented and ready to move into
2 reception rooms
Family bathroom





FULL DESCRIPTION

An excellent opportunity to purchase this spacious and well-presented three-bedroom bungalow with two reception rooms, offering a fantastic sense of space throughout. The current owner has maintained the property to a high standard, creating a home that is ready for a buyer to move straight into and enjoy.

This substantial bungalow briefly comprises: a welcoming and generously sized entrance hall, a front lounge with feature fireplace, three well-proportioned bedrooms, a large four-piece family bathroom, and a modern, bright kitchen overlooking the rear garden. The kitchen flows seamlessly into a spacious dining room, with potential for buyers to create an open-plan kitchen diner if desired.

Externally, the property benefits from an attractive porch entrance, off-street parking for several vehicles, and a well-maintained lawned rear garden.

Positioned at the entrance to a quiet close in Bexley, the bungalow offers convenient access to local shops, parks, highly regarded schools, and Albany Park train station.

Directions

From our Sidcup office turn right and proceed along Station Road, at the traffic lights turn right into Hurst Road, left at the roundabout into Penhill Road, take the second turning on the right into Albany Road and Albany Close is the first turning on the left hand side. Closest Stations: Albany Park (0.57 mi) Sidcup (0.99 mi) Bexley (1.13 mi) Closest Schools: Hurst Primary School (0.29 mi) Sherwood Park Primary School (0.49 mi) Hurstmere School (0.44 mi) Blackfen School for Girls (0.55 mi)



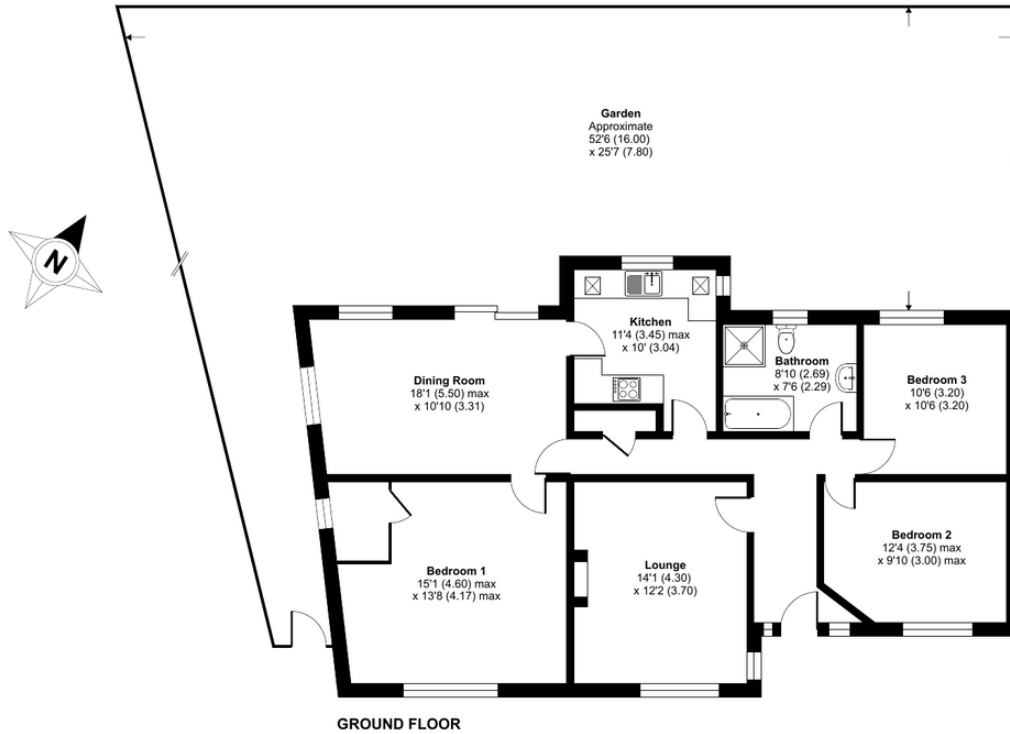


Local Authority
Council Tax Band
EPC Rating

Bexley London Borough Council
E
D

Albany Close, Bexley, DA5

Approximate Area = 1156 sq ft / 107.3 sq m
For identification only - Not to scale



Floor plan produced in accordance with RICS Property Measurement Standards incorporating International Property Measurement Standards (IPMS2 Residential). © nitchecom 2026. Produced for Drewery. REF: 1465856

Drewery Property Consultants
128 Station Road
Sidcup
Kent
DA15 7AF

Contact
020 8269 6605
info@drewery.co.uk
www.drewery.co.uk

Agents Note: Whilst every care has been taken to prepare these particulars, they are for guidance purposes only. All measurements are approximate and are for general guidance purposes only and whilst every care has been taken to ensure their accuracy, they should not be relied upon and potential buyers/tenants are advised to recheck the measurements.