



Devonhurst Place, London, W4 4JD

£6,250 Per Calendar Month

WHITMAN & CO.

SALES · LETTINGS · COMMERCIAL

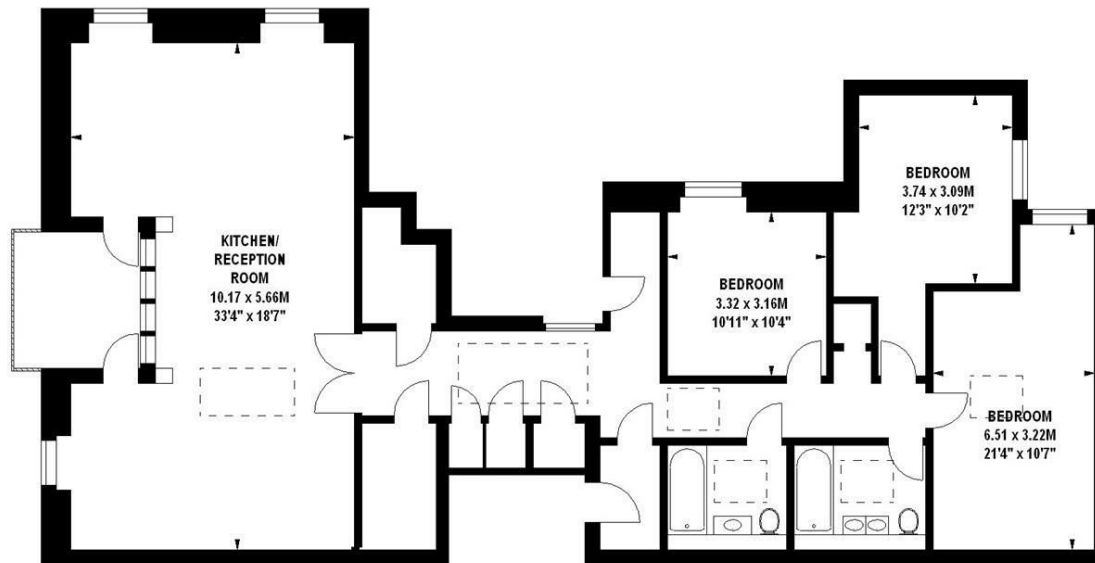
- Stunning penthouse
- Secure gated development with concierge
- Three large double bedrooms
- Available now
- Far reaching views
- Allocated underground parking
- Central location close to numerous facilities
- Unfurnished

Local Authority - Hounslow

Devonhurst Place, W4

Approximate gross internal area

148.18 sq m / 1595 sq ft

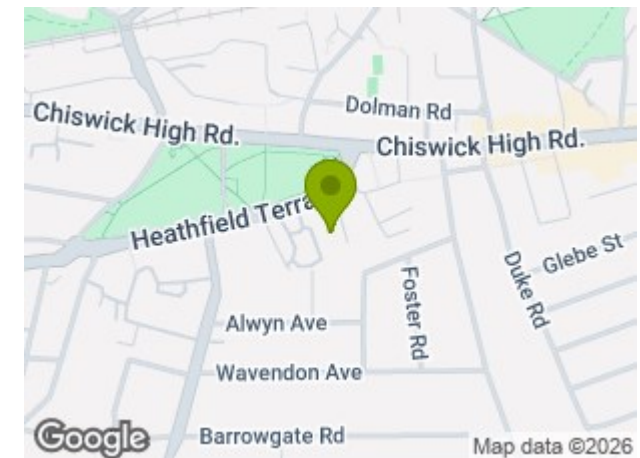


The floor plan is not to scale and measurements and areas shown are approximate and therefore should be used for illustrative purposes only. The plan has been prepared in accordance with the RICS code of Measuring Practice and whilst we have confidence in the information produced, it must not be relied on. If there is any aspect of particular importance, you should carry out or commission your own inspection of the property.
Copyright of FeaturePRO.

THE PROPERTY

A stunning 1560 sqft penthouse with far-reaching views located in this secure gated development in the heart of Chiswick. Finished to a very high standard and benefitting from private lift access into the flat the property comprises; 33'4 x 18'7 dual aspect reception/kitchen with private West facing balcony, three large double bedrooms two luxury bathrooms, entrance hall, utility room, extensive storage, allocated underground parking, communal gardens, concierge service. Devonhurst Place is situated just off Turnham Green, being a stone's throw from Chiswick High Road with its extensive facilities. Transport links include Turnham Green and Chiswick Park Stations, local bus routes, and the A4/M4 for routes in and out of London. Hounslow Council Tax Band G. Available now, unfurnished.

SITUATION



5-7 Turnham Green Terrace, Chiswick, London, W4 1RG

Tel 020 8747 8800

E-mail lettings@whitmanandco.com

Website www.whitmanandco.com