

DIRECT



MOVES



Golden cap

Waterside, Bowleaze Cove way, Weymouth DT3 6PP

- 2 spacious bedrooms
- Modern integrated kitchen
- Exclusive owner clubs
- Viewing highly recommended
- Site fee includes Wi-fi and many owner benefits including full site access.
- Large master with en-suite
- Access to spa and gym, Heated indoor/outdoor pools
- 5* Luxury park home living
- Moments from Coastal Walks
- Non-residential Holiday Park

Asking Price £57,000 Leasehold



Open Plan Living

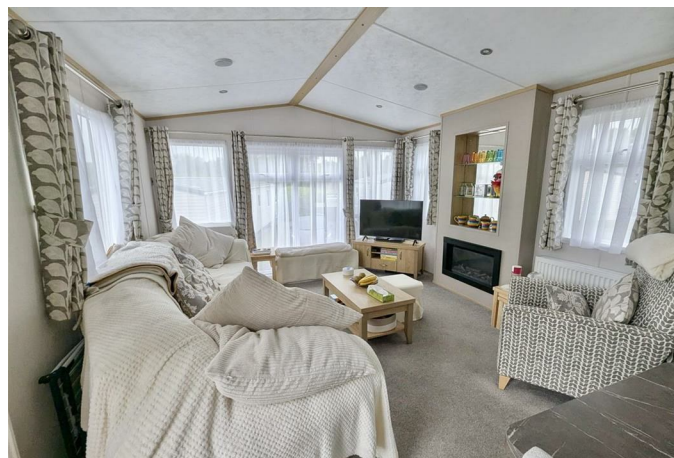
21'3" x 11'5"

Lounge Area:

This lovely multi-aspect reception area of the open living is full of light coming from the floor to ceiling front window. Electric remote fireplace provides light and warmth on those colder evenings alongside the wall mounted radiators.

Kitchen/ Dining Area

The fully integrated modern kitchen boasts ample worktop space and units with dishwasher, washing machine, well-sized fridge and freezer along with a 4 ring gas hob oven. Space for Dining table.



Hallway

Provides access to all rooms

Bedroom Two

5'6" x 8'10"

This good size bedroom has 2 single beds (currently adjoined with a mattress topper) and a side aspect window, built in wardrobes, a wall mounted radiator and ceiling spot lighting.

Shower Room

3'3" x 6'6"

Side aspect shower room with obscured window. The suite comprises of a walk in shower, hand wash basin and low level W/C, an extractor fan and ceiling spot lighting.

Bedroom One

10'5".26'2"

Double bedroom with built in wardrobes, over bed storage and vanity style unit with mirror, side aspect window and a door into...

En-suite

6'6" x 3'3"

A side aspect en-suite with walk in shower, vanity style wash basin and low level W/C, wall mounted radiator, extractor fan and ceiling spotlights.

Outside

Set in a quieter area of the park, the park home benefits from its own off-road parking and lawn area with metal shed for storage. Steps up to raised composite decking area for private seating which provides lovely views of the local countryside and access to the front door.

Disclaimer

Direct Moves Estate Agents make no representations or warranties regarding the accuracy, completeness, or reliability of the property details provided. These details are for informational purposes only and should not be relied upon in any way. The

information is not intended to form part of any contract and does not constitute an offer or guarantee by Direct Moves.

Should you wish to proceed with an offer on this property, we are obligated by HMRC to conduct mandatory Anti-Money Laundering Checks. We outsource these checks to our compliance partners at Coadjute and they charge a fee for this service.



Local Authority
Council Tax Band **Exempt**
EPC Rating



Whilst every attempt has been made to ensure the accuracy of the floorplan contained here, measurements of areas, windows, doors and any other items are approximate and the responsibility is taken for any error, omission or mis-statement. This plan is for illustrative purposes only and should be used as such by any prospective purchaser. The services, fixtures and appliances shown here are not guaranteed and may vary as to their operability or efficiency over the years.
Made with MyPlan ©2020



Direct Moves Estate Agents Office

9 Westham Road
Dorset
Weymouth
DT4 8NP

Contact

01305 778500
sales@directmoves.com
<https://directmoves.com/>

Agents Note: Whilst every care has been taken to prepare these particulars, they are for guidance purposes only. All measurements are approximate and for general guidance purposes only and whilst every care has been taken to ensure accuracy, they should not be relied upon and potential buyers/tenants are advised to recheck the measurements.