



Russell Gardens Mews, W14

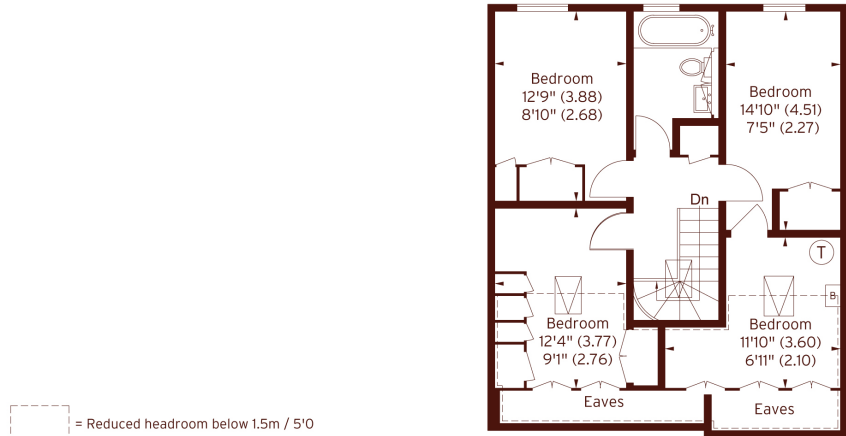
£2,000,000

5 3 2 D

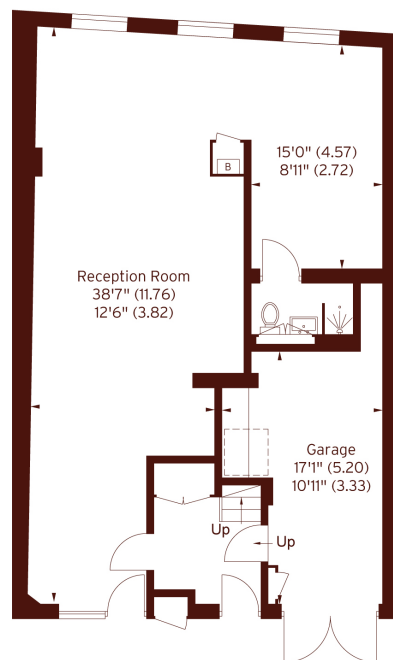
- Five Bedrooms
- Freehold
- Two Receptions
- Cobbled Mews
- Secure Garage
- Three Bathrooms

Russell Gardens Mews, W14

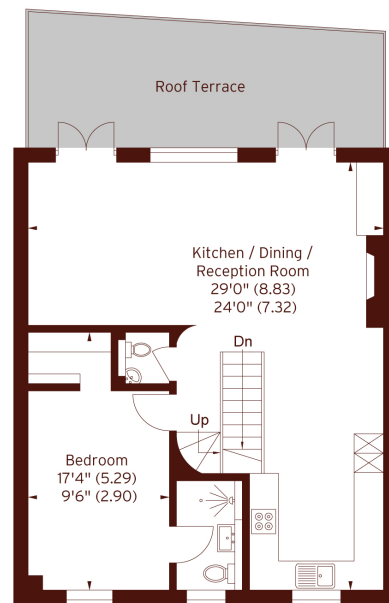
APPROX. GROSS INTERNAL FLOOR AREA 2255 SQFT / 209.5 SQM
(INCLUDING EAVES / GARAGE / EXCLUDING STORE)



SECOND FLOOR



GROUND FLOOR



FIRST FLOOR

The floor plan is not to scale and measurements and areas shown are approximate and therefore should be used for illustrative purposes only. The plan has been prepared in accordance with the RICS code of measuring Practice and whilst we have confidence in the information produced, it must not be relied on. If there is any aspect of particular importance, you should carry out or commission your own inspection of the property.

Marsh & Parsons Holland Park

57 Norland Square, London,
W11 4QJ
020 7605 6890