

Baylis Road, SE1

£500,000

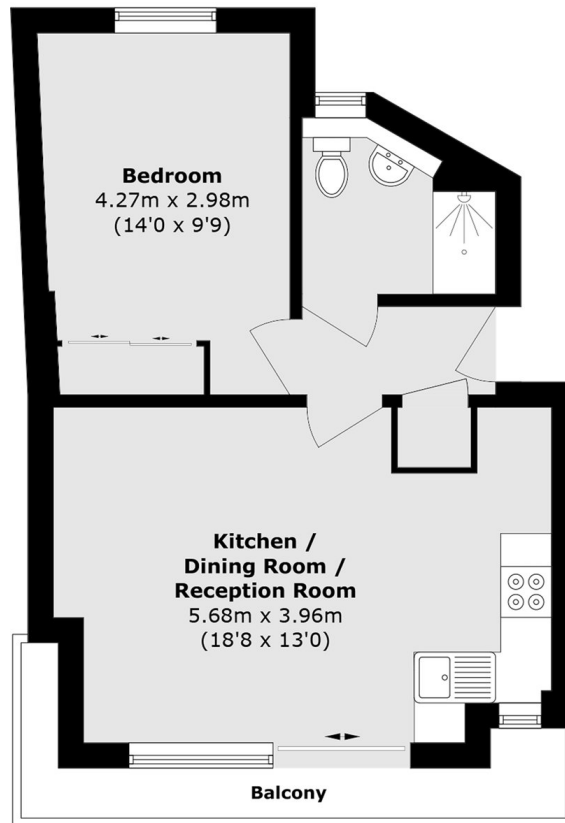
A highly attractive top-floor apartment boasting stunning views of the London Eye. The property features a private west-facing balcony, perfect for enjoying afternoon and evening sun, an open-plan kitchen and living area, a generously sized double bedroom, a stylish three-piece bathroom, and ample built-in storage throughout.

Baylis Road is enviably located in the heart of Waterloo, moments from the cafés, street food markets and independent shops of Lower Marsh and the theatres and restaurants of The Cut. The South Bank's iconic riverside walk, home to the National Theatre and Royal Festival Hall, is just a short stroll away. Westminster and Covent Garden are easily reached on foot across the river.

Features

- Top Floor Flat
- Views of the London Eye
- Lift Access & Secure Entry
- Private West-Facing Balcony
- Very Central Location
- Chain Free Sale

Baylis Road,
LONDON, SE1



Total area (approx.): 42.7 sq. m (459.6 sq. ft)

Balcony area (approx.): 4.8 sq. m (51.6 sq. ft)

Dexters

London Bridge
54 Borough High Street
London
SE1 1XL
Sales
020 7650 5 100

Energy Rating: . We aim to make our particulars both accurate and reliable. However they are not guaranteed; nor do they form part of an offer or contract. If you require clarification on any points then please contact us, especially if you're traveling some distance to view. Please note that appliances and heating systems have not been tested and therefore no warranties can be given as to their good working order.

 **RICS** | Regulated
Estate Agent
and Letting Agent

dexters.co.uk