



34 Tylehurst Drive
Redhill

Guide Price **£425,000**



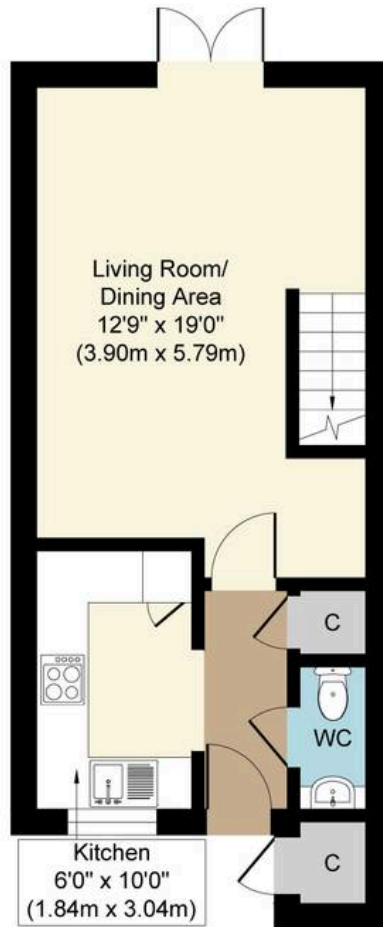
Tucked away in a quiet and modern development, this attractive two-bedroom terraced house is the perfect blend of contemporary style and practical living. The property is bright and spacious throughout, offering a welcoming atmosphere from the moment you step inside. The modern kitchen is positioned at the front aspect, featuring sleek cabinetry and ample worktop space, ideal for both every-day cooking and entertaining guests. To the rear, an open plan living and dining area provides direct access to the south south east facing garden, allowing plenty of natural light to flood the space. Upstairs, there are two generous double bedrooms, including a master bedroom that benefits from its own en-suite shower room. A stylish family bathroom and a convenient cloakroom/wc complete the interior accommodation. With Redhill and Earlswood stations both within easy walking distance, this property is exceptionally well located for commuters, offering quick links to London, Gatwick and Brighton. Additionally, Redhill town centre provides a range of shops, cafes, local schools and gyms, ensuring everything you need is close at hand.

The outside space is equally impressive, with a private rear garden that enjoys a sunny south south east aspect, perfect for relaxing or entertaining friends and family. The garden is easily accessible from the living room, creating a seamless flow between indoor and outdoor living. Low maintenance borders and a neat lawn provide an ideal setting for outdoor dining or summer barbeques. To the front of the property, there is one allocated off-road parking space, along with additional visitor parking within the development and further street parking available on surrounding roads (subject to availability).

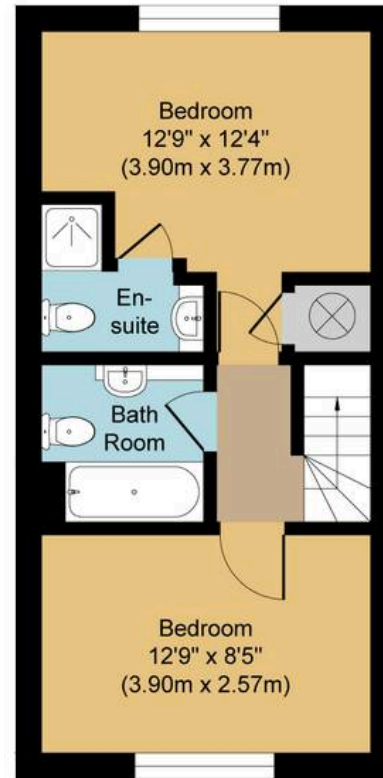
Council Tax band: D. Tenure: Freehold







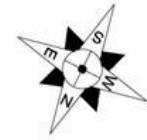
Ground Floor
Approximate Floor Area
361 sq. ft
(33.52 sq. m)



First Floor
Approximate Floor Area
355 sq. ft
(32.98 sq. m)



Outbuilding



Tylehurst Drive, RH1
Approx. Gross Internal Floor Area 716 sq. ft / 66.50 sq. m
(Excluding One Allocated Parking Space)



Whilst every attempt has been made to ensure the accuracy of the floor plan contained here, measurements of doors, windows, rooms and any other items are approximate and no responsibility is taken for any error, omission, or mis-statement. The measurements should not be relied upon for valuation, transaction and/or funding purposes. This plan is for illustrative purposes only and should be used as such by any prospective purchaser or tenant. The services, systems and appliances shown have not been tested and no guarantee as to their operability or efficiency can be given.