



9 Priory Crescent, Gedling - NG4 3LH

In Excess of £300,000

DavidJames
the estate agent



9 Priory Crescent

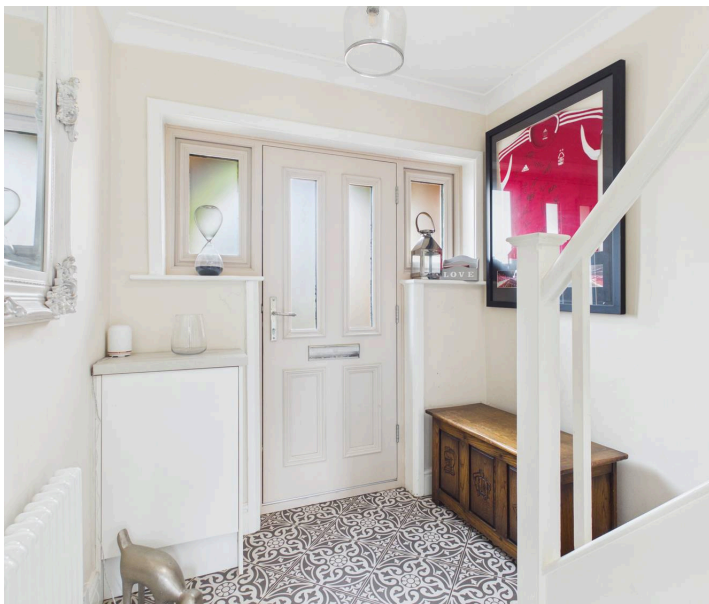
Gedling, Nottingham

Beautifully-presented traditional detached family home tucked away in a cul-de-sac! Within easy reach of local amenities and schools, boasting 2 reception spaces plus a modern kitchen and bathroom!

Council Tax band: C

Tenure: Freehold

- Traditional detached family home
- Tucked away from the roadside in a desirable cul-de-sac
- Conveniently located within easy reach of local amenities, a variety of popular schools and transport links
- Welcoming entrance hall with useful storage
- Bright and spacious lounge with a feature multi-fuel burner
- Adjoining dining room with sliding patio doors
- Superb contemporary kitchen with a range of integrated appliances
- Three first floor bedrooms (including two doubles with custom fitted wardrobes)
- Beautiful modern bathroom with a four-piece suite (including both a bath and separate shower enclosure)
- Corner position provides a generous lawned rear garden with a large patio terrace









Floor 0

Approximate total area⁽¹⁾
78.1 m²
840 ft²



Floor 1



(1) Excluding balconies and terraces

Calculations reference the RICS IPMS 3C standard. Measurements are approximate and not to scale. This floor plan is intended for illustration only.



David James Estate Agents

David James Estate Agents, 45B Plains Road – NG3 5JU

0115 962 4213 • mapperley@david-james.com • www.david-james.com

These particulars are produced in good faith and are set out as a general guide only. Measurements are approximate and floor plans are for illustrative purposes only. Services have not been tested. We have established professional relationships with third-party suppliers for the provision of services to Clients, details of which can be found on the property listing page on our website.