



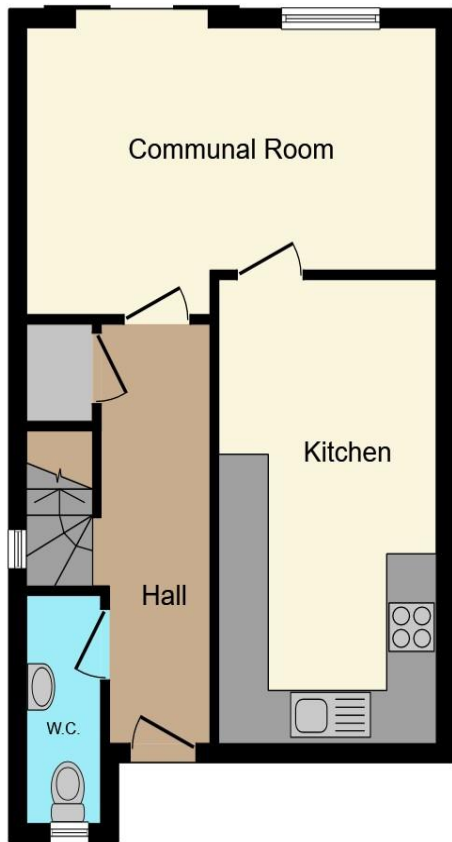
Mcwilliam Close, Poole BH12 5HP

welcome to

Mcwilliam Close, Poole

Well-presented six-bed HMO townhouse across three floors, generating £3,225pcm and fully compliant with HMO and BCP Council requirements. Features a contemporary kitchen, large reception, three shower rooms, WC, off-street parking and a private garden, delivering strong yields.

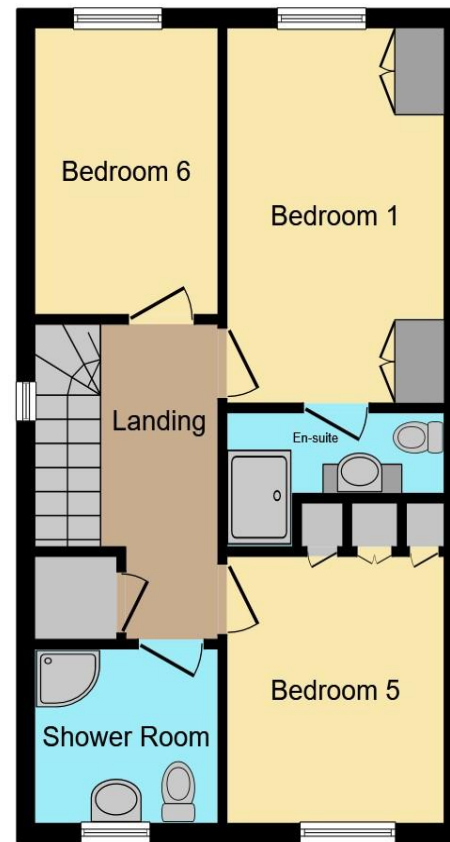




Ground Floor



First Floor



Second Floor

Entrance Hallway

Kitchen

17' 2" Max x 8' 8" (5.23m Max x 2.64m)

Lounge

16' 3" Max x 10' 7" (4.95m Max x 3.23m)

Bedroom 1

10' 6" Max x 8' 1" (3.20m Max x 2.46m)

Bedroom 2

18' 1" Max x 8' 11" (5.51m Max x 2.72m)

Bedroom 3

11' 6" Max x 8' 2" (3.51m Max x 2.49m)

Bedroom 4

14' Max x 8' 11" (4.27m Max x 2.72m)

Bedroom 5

9' 11" Max x 8' 7" (3.02m Max x 2.62m)

This floor plan is for illustrative purposes only. It is not drawn to scale. Any measurements, floor areas (including any total floor area), openings and orientation are approximate. No details are guaranteed, they cannot be relied upon for any purpose and they do not form part of any agreement. No liability is taken for any error, omission or misstatement. A party must rely upon its own inspection(s). Powered by www.focalagent.com

welcome to

McWilliam Close, Poole

- Three-Storey Semi-Detached HMO Town House Professional Let - HMO Compliant & BCP Council Compliant
- Rental Yield - 8%
- Modern Newly Fitted Kitchen
- 98% Cccupancy For The Past 4 Years
- Private Rear Garden
- Hard Wired Fire Alarm And Emergency Lighting System
- Three Shower Rooms, & Ground Floor Cloakroom
- NO FORWARD CHAIN

Tenure: Freehold EPC Rating: C

Council Tax Band: E

£460,000



Please note the marker reflects the postcode not the actual property

view this property online fox-and-sons.co.uk/Property/WTN110308



Property Ref:
WTN110308 - 0010

1. MONEY LAUNDERING REGULATIONS Intending purchasers will be asked to produce identification documentation at a later stage and we would ask for your co-operation in order that there is no delay in agreeing the sale. 2. These particulars do not constitute part or all of an offer or contract. 3. The measurements indicated are supplied for guidance only and as such must be considered incorrect. Potential buyers are advised to recheck measurements before committing to any expense. 4. We have not tested any apparatus, equipment, fixtures or services and it is in the buyers interest to check the working condition of any appliances. 5. Where an EPC, or a Home Report (Scotland only) is held for this property, it is available for inspection at the branch by appointment. If you require a printed version of a Home Report, you will need to pay a reasonable production charge reflecting printing and other costs. 6. We are not able to offer an opinion either written or verbal on the content of these reports and this must be obtained from your legal representative. 7. Whilst we take care in preparing these reports, a buyer should ensure that his/her legal representative confirms as soon as possible all matters relating to title including the extent and boundaries of the property and other important matters before exchange of contracts.

Fox & Sons is a trading name of Sequence (UK) Limited which is registered in England and Wales under company number 4268443, Registered Office is Cumbria House, 16-20 Hockliffe Street, Leighton Buzzard, Bedfordshire, LU7 1GN. VAT Registration Number is 500 2481 05.


fox & sons



01202 512606



Winton@fox-and-sons.co.uk



367 Wimborne Road, BOURNEMOUTH, Dorset,
BH9 2AQ



fox-and-sons.co.uk