



Asking Price Of £275,000

Cambrian Close, St.  
Marys Mead, Paignton,  
TQ4 7GA

A three bedroom link detached house, situated in the highly sort after St. Marys Mead development in the area of Collaton St. Mary. The property whilst requiring some updating offers lovely family living and on a level plot with driveway and garage. No forward chain.





uPVC double glazed front door to:-

ENTRANCE HALLWAY

DOWNSTAIRS CLOAKROOM Low level WC, small wash basin and central heating radiator.

LOUNGE uPVC double glazed window. Central heating radiator. Door to:-

KITCHEN/DINER Range of fitted wash and base units with built in double oven. Freestanding washing machine and dishwasher. uPVC double glazing. Central heating radiator. Door to rear garden.

LANDING Access to insulated loft space.

BEDROOM ONE ENSUITE uPVC double glazing. Central heating radiator. Door to:-

ENSUITE Low level WC, wash hand basin and shower cubicle.

BEDROOM TWO uPVC double glazing. Central heating radiator. Open outlook.

BEDROOM THREE uPVC double glazing. Central heating radiator.

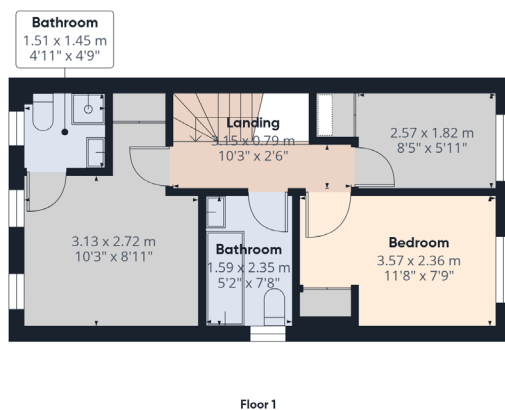
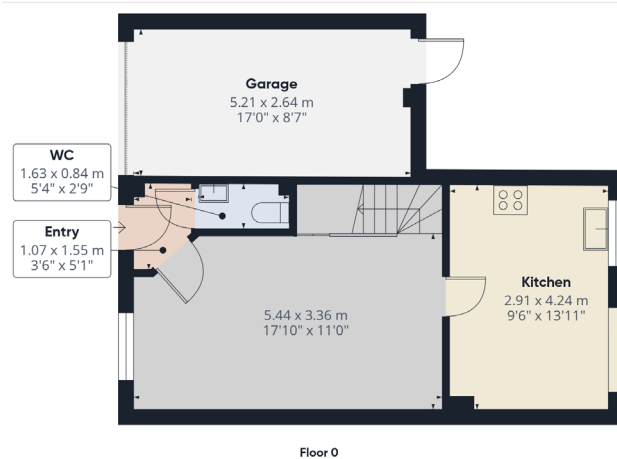
BATHROOM Fitted bathroom suite comprising panelled bath, pedestal wash basin and low level WC. Pat tiled and uPVC double glazing.

OUTSIDE Driveway onto-

GARAGE Power and lighting, metal up and over door.

FRONT GARDEN Small easily maintained lawned garden area.

REAR GAREN Patio and lawned garden area.



Address 'Cambrian Close, St. Marys Mead, Paignton, TQ4 7GA'

Tenure 'Freehold'

Council Tax Band 'D'

EPC Rating 'TBC'

Taylor's Estate Agents  
256 Torquay Road  
Paignton  
TQ3 2EZ