



Portsmouth Road, KT6

£600,000

This stunning top-floor two bedroom apartment is ideally situated in a quiet, tucked-away location in the heart of Surbiton. Offering over 900 sq ft of beautifully presented living space, two bathrooms and a large private balcony, the property is just a short walk from Surbiton mainline Station and the River Thames.

Tangerby House is just off Portsmouth Road which runs along the idyllic River Thames, leading to Kingston town centre. Surbiton's mainline train station is approximately half a mile away offering fast access to London Waterloo. Maple Road, the farmers market, cafes and restaurants are nearby as are some great local schools.

Features

- Immaculate Condition
- Over 900 Sq Ft
- Two Bathrooms
- Underfloor Heating Throughout
- Large Private Balcony
- Allocated Parking



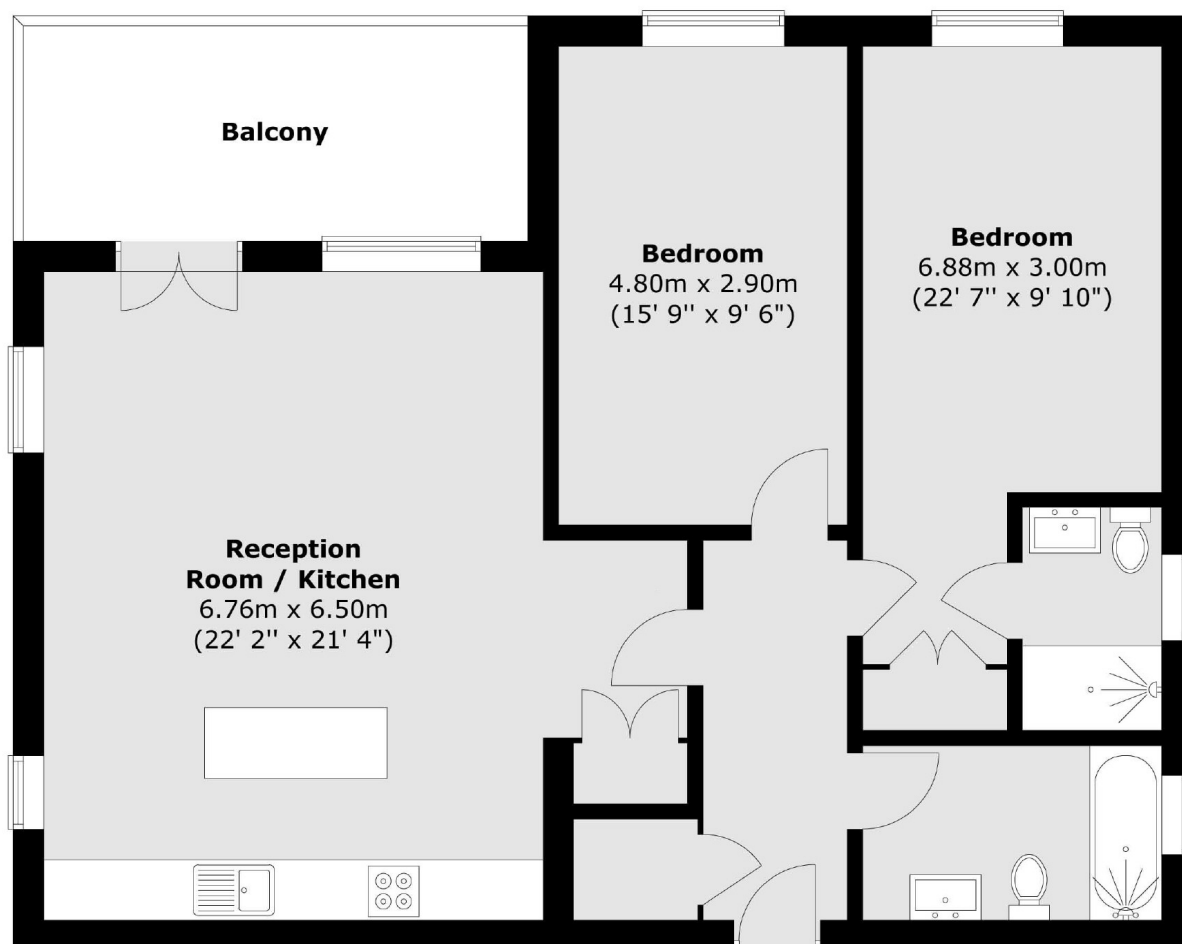
Portsmouth Road, KT6

Built circa 2017, this modern home features a spacious open-plan kitchen with an island, seamlessly flowing into the bright and airy living area. The main bedroom benefits from a stylish en-suite bathroom, complemented by a second generous double bedroom.

Additional highlights include underfloor heating throughout and an allocated parking space.



Portsmouth Road, Surbiton, KT6



Total area (approx.) : 87 sq. m (936 sq. ft)
Total balcony area (approx.) : 9.1 sq. m (98 sq. ft)