



Beldover Drive, Nottingham
£615,000

 **NEWTON FALLOWELL**

6 Beldover Drive

Nottingham

Occupying on the highly regarded Beldover Drive, this substantial five/six-bedroom detached residence presents a rare opportunity to acquire one of the largest homes across the entire development.

Council Tax band: E

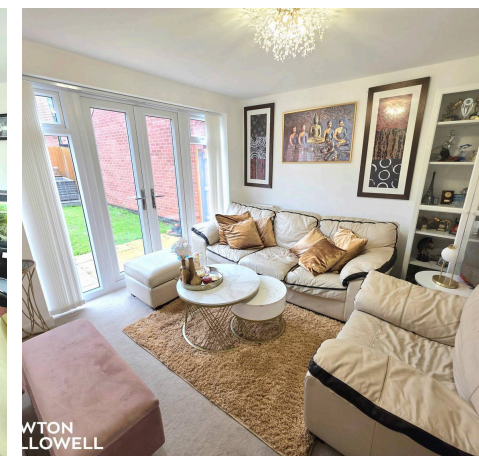
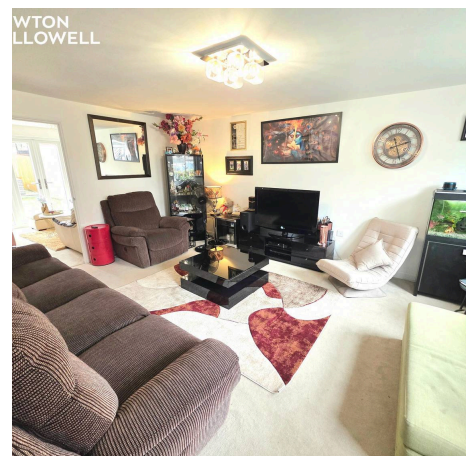
Tenure: Freehold

EPC Energy Efficiency Rating: B

EPC Environmental Impact Rating: B

- Sought after location with links to the motorway and major roads into Nottingham
- Five/six bedrooms (if required-study/reception room)
- Private driveway and double garage
- Set over three levels
- Master bedroom boasts a separate dressing area and En-suite bathroom (4 piece)
- One of the largest styles on the whole development with four reception rooms

 NEWTON
FALLOWELL





Lounge

16624' 0" x 12280' 2" (5,067.00m x 3,743.00m)

Dining Room

10695' 6" x 10190' 3" (3,260.00m x 3,106.00m)

Kitchen

20072' 2" x 13451' 5" (6,118.00m x 4,100.00m)

Utility

6069' 7" x 38202' 1" (1,850.00m x 11,644.00m)

Study

9937' 8" x 8310' 4" (3,029.00m x 2,533.00m)

Bedroom 1

16446' 10" x 12457' 4" (5,013.00m x 3,797.00m)

Dressing area attached

En-suite

10492' 2" x 6742' 2" (3,198.00m x 2,055.00m)

Bedroom 2

15567' 7" x 10498' 8" (4,745.00m x 3,200.00m)

Bedroom 3

11594' 6" x 11473' 1" (3,534.00m x 3,497.00m)

Bedroom 4

17795' 3" x 11003' 11" (5,424.00m x 3,354.00m)

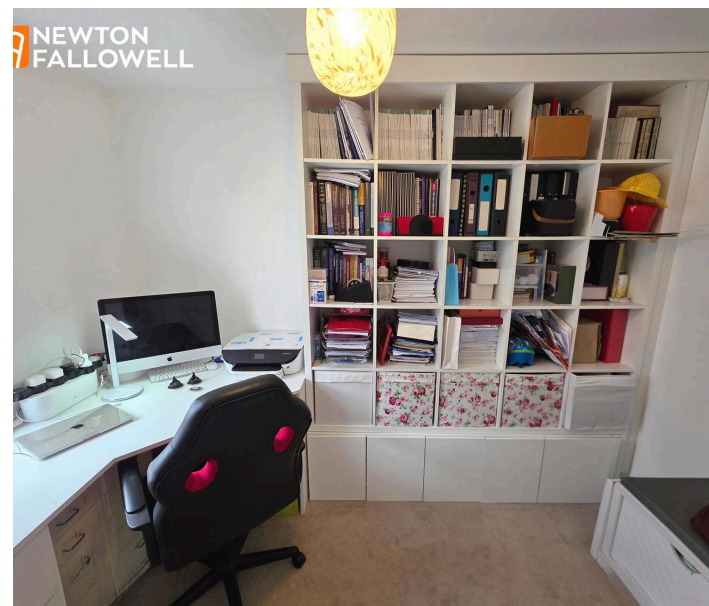
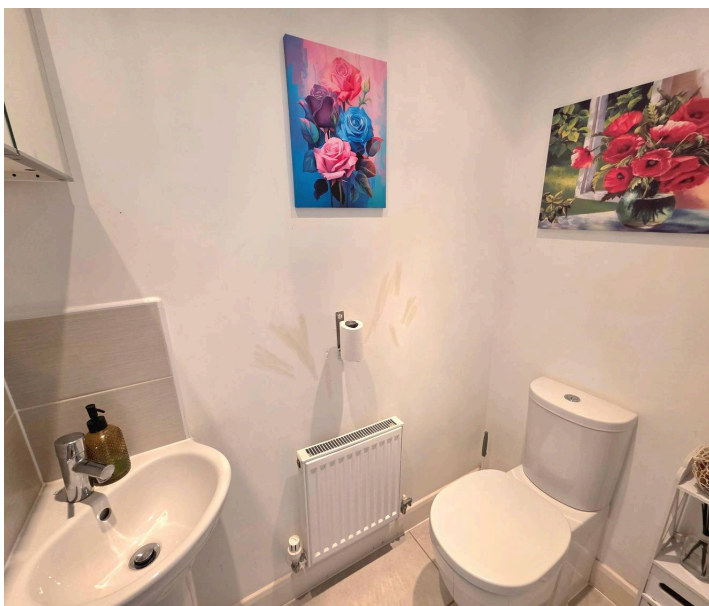
Top Floor

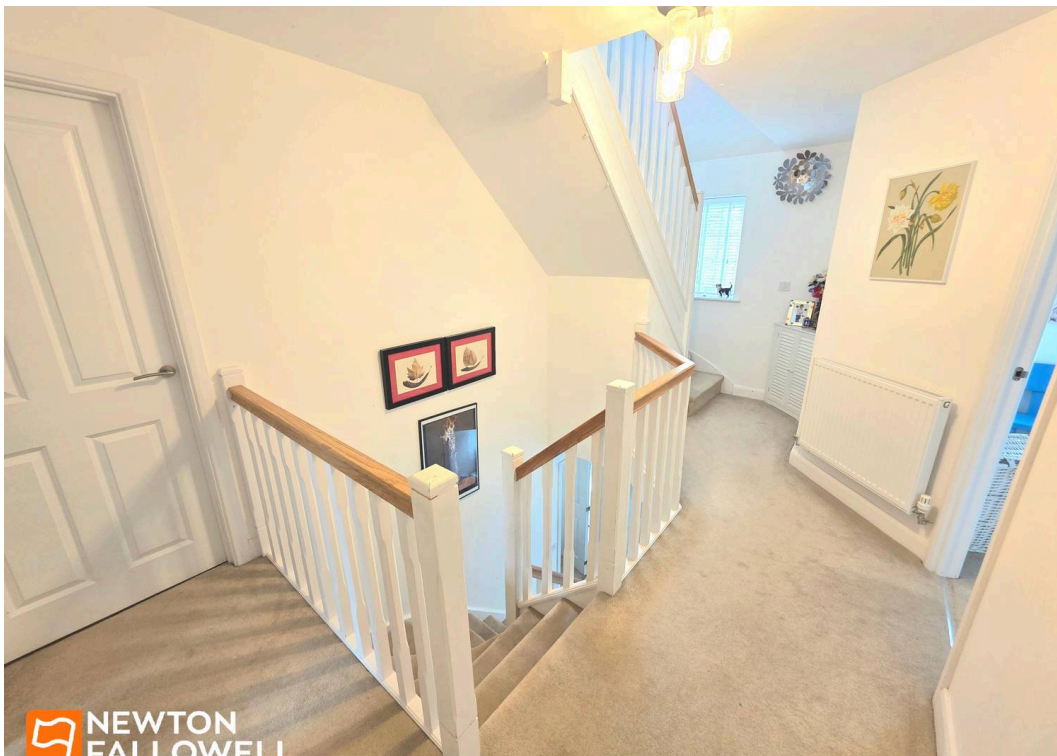
Bedroom 5

19212' 7" x 12523' 0" (5,856.00m x 3,817.00m)

En-suite Top Floor

21981' 8" x 8540' 0" (6,700.00m x 2,603.00m)





 NEWTON FALLOWELL



 NEWTON FALLOWELL



 NEWTON FALLOWELL



 NEWTON FALLOWELL





Newton Fallowell Mansfield

Newton Fallowell Estate Agents, 13 Market Street - NG18 1JG

01623
424616

· Mansfield@newtonfallowell.co.uk

www.newtonfallowell.co.uk/mansfield-estate-agents/

 **NEWTON FALLOWELL**