



Guide Price
£130,000

Leasehold

2x  1x  1x 

**Guildhall Court,
Guildhall Street,
Folkestone, Kent, CT20**

Wards
Helping you move forwards



Main features

- Allocated parking
- Ideal first time buyer / investor purchase
- Close to local amenities
- Lovely views
- Light and airy

Accommodation

FIRST FLOOR

Hallway

Lounge: 13'5 x 12'0 (4.09m x 3.66m)

Kitchen: 9'8 x 9'5 (2.95m x 2.87m)

Bedroom 1: 12'0 x 6'7 (3.66m x 2.01m)

Bedroom 2: 12'0 x 7'0 (3.66m x 2.14m)

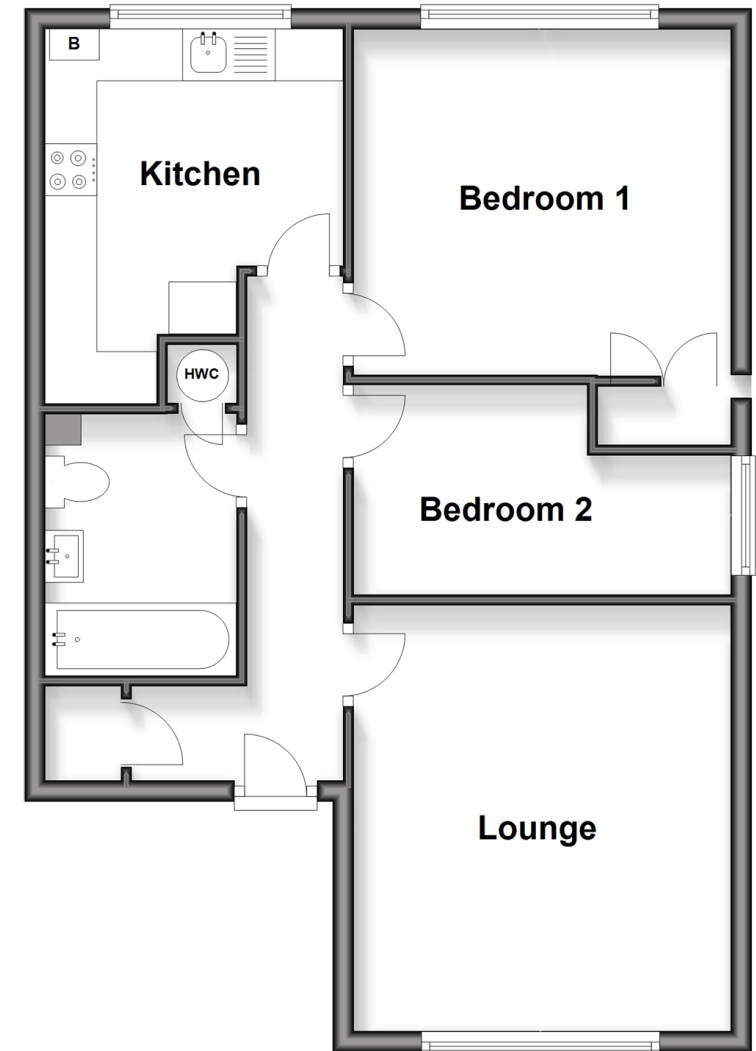
Bathroom

OUTSIDE

Allocated Parking

First Floor

Approx. 56.8 sq. metres (611.0 sq. feet)



Call Folkestone - 01303 256505 ■ wardsfolkent.co.uk

■ If buying to rent, please check if Local Authority licensing schemes apply before proceeding



12600TV1/20260508/LS/LS1