



Guide Price
£225,000

Freehold

2x  1x  1x 

**Windsor Gardens, Herne
Bay, Kent, CT6**

OVER 60?

Secure this property
for up to **59% less!**

Wards
Helping you move forwards



Main features

- Abbey Homes built terraced house
- Vacant possession
- Conservatory, private setting
- Two allocated parking spaces to front
- Easy access to the Thanet Way

Accommodation

GROUND FLOOR

Entrance Hall
 Kitchen: 8'2 x 6'0 (2.49m x 1.83m)
 Lounge/Diner: 16'8 x 12'10 (5.08m x 3.91m)
 Conservatory

FIRST FLOOR

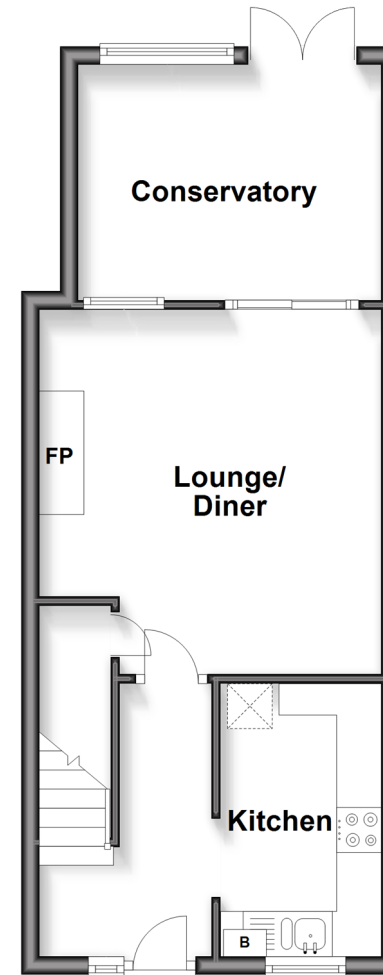
Landing
 Bedroom 2: 12'10 x 9'2 (3.91m x 2.80m)
 Shower Room
 Bedroom 1: 12'11 x 8'2 (3.94m x 2.49m)

OUTSIDE

Front Garden
 Rear Garden
 Two allocated parking spaces

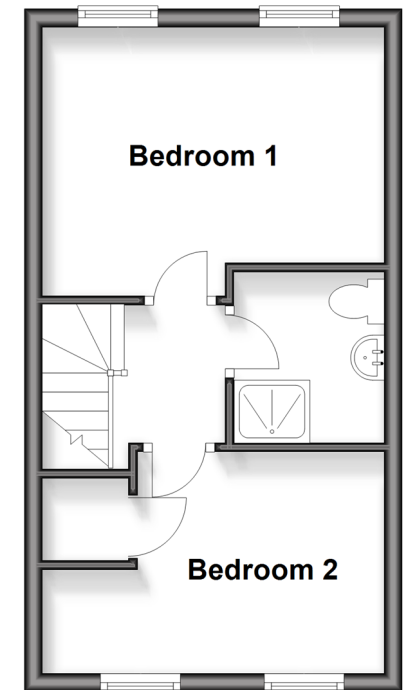
Ground Floor

Approx. 36.8 sq. metres (396.2 sq. feet)



First Floor

Approx. 27.6 sq. metres (296.7 sq. feet)



Call Herne Bay - 01227 361226 ■ wardsof Kent.co.uk

- Legal advice should be taken to verify fixtures/fittings, planning, alterations and/or lease details
- Appliances & services are untested, dimensions are approximate and floor plans are not to scale
- Through a Homewise Home For Life Plan people aged 60+ can secure this property for up to 59% less, by purchasing a Lifetime Lease



11227916/20260314/DP/GG