

Butler's

thoughtful estate agency

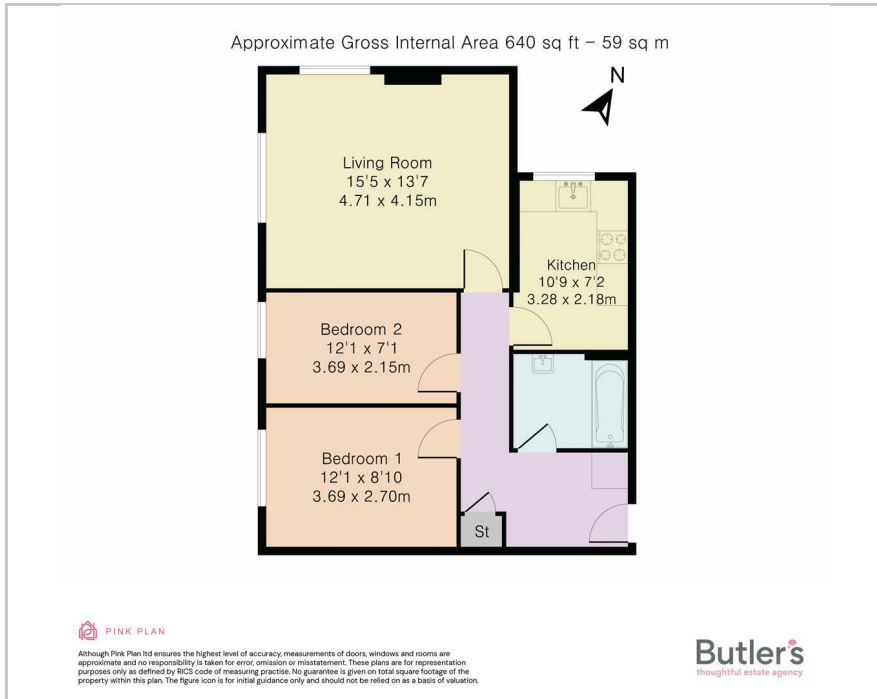


50 St. James Road, Sutton, SM1 2TR
Guide price £300,000

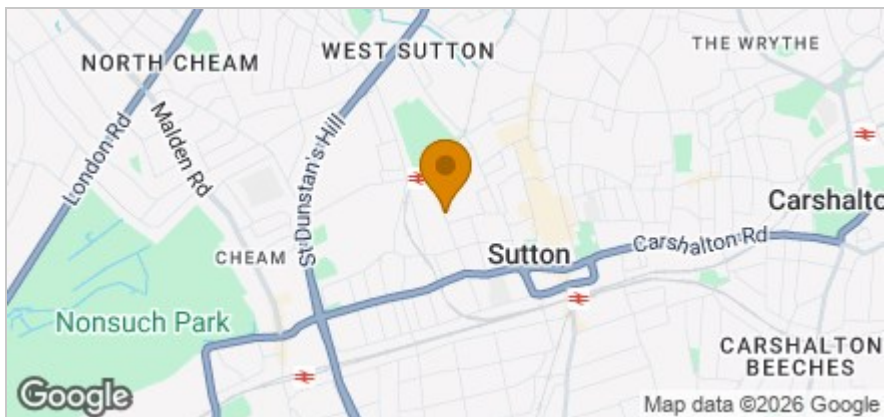


Butler's
thoughtful estate agency

Floor Plan



Area Map



Accommodation

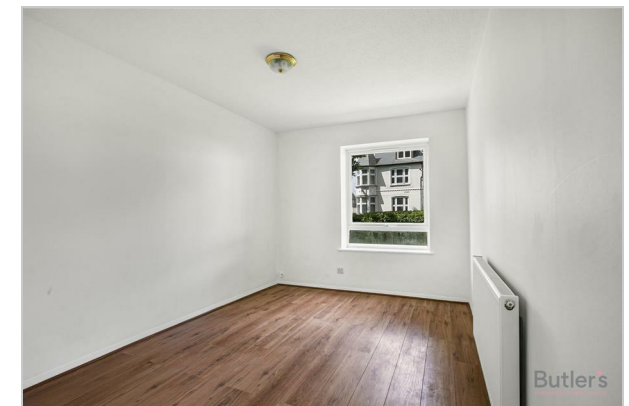
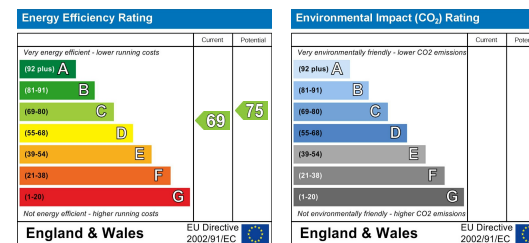
- Refurbished 2 bedroom apartment
- NO ONWARD CHAIN
- Ground floor
- Garage en-bloc
- Modern kitchen & bathroom
- Spacious living/dining room
- Convenient location close to excellent amenities, schooling & transport links



Viewing

Please contact our Butler's Lettings Office on 020 39 170 160 if you wish to arrange a viewing appointment for this property or require further information.

Energy Efficiency Graph



These particulars, whilst believed to be accurate are set out as a general outline only for guidance and do not constitute any part of an offer or contract. Intending purchasers should not rely on them as statements of representation of fact, but must satisfy themselves by inspection or otherwise as to their accuracy. No person in this firm's employment has the authority to make or give any representation or warranty in respect of the property.

18 Sutton Plaza, Sutton, Surrey, SM1 4FS

Tel: 020 39 170 160 Email: lettings@butlershomes.co.uk butlershomes.co.uk