



Royal Earlswood Park, Redhill

£300,000





“

A beautifully positioned top-floor apartment with residents-only gym and swimming pool, offering calm, connected living within the serene setting of Royal Earlswood Park.

”



****Guide Price £300,000 - £325,000****

Tucked away within the beautiful surroundings of Royal Earlswood Park, this elegant top-floor apartment offers a quietly refined way of living — where character, calm and convenience come together effortlessly.

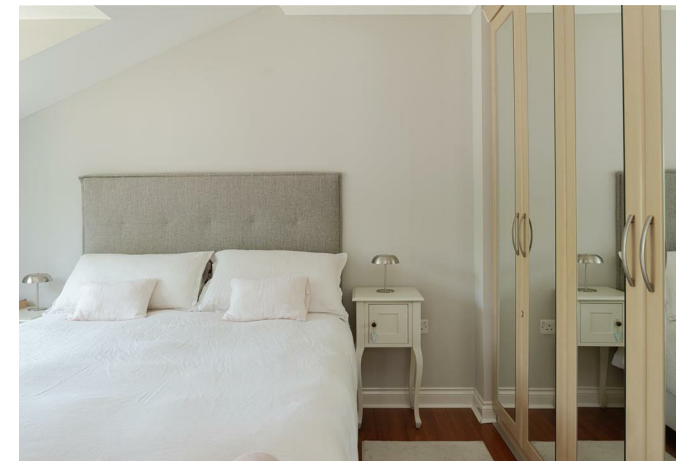
Thoughtfully arranged, the home opens into a generous open-plan living, kitchen and dining space — the true heart of everyday life. It's a space designed for both slow mornings and sociable evenings, with natural light pouring in and a sense of openness that feels immediately welcoming.

There are two well-proportioned double bedrooms, each providing a peaceful retreat, complemented by two bathrooms that balance practicality with comfort.

A standout feature is the exclusive access to on-site residents-only leisure facilities, including a swimming pool and gym — adding a layer of lifestyle convenience rarely found.

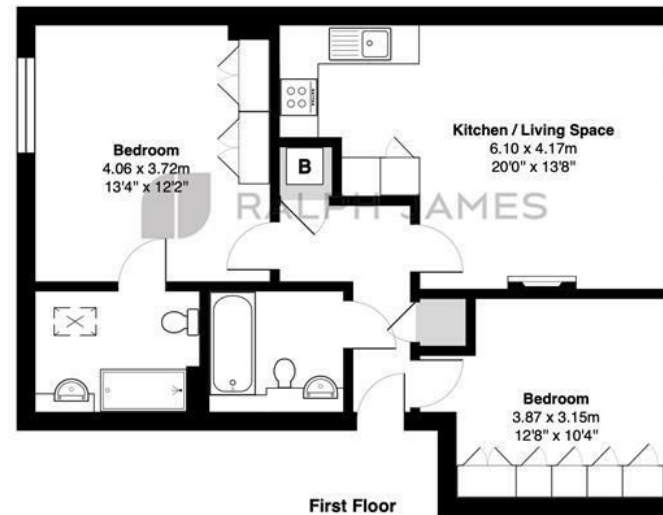
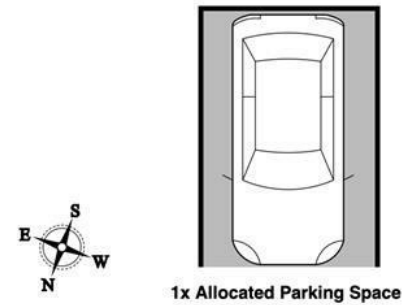
Set within the leafy, tranquil setting of Royal Earlswood Park, life here unfolds at a more considered pace. Whether it's enjoying the surrounding greenery or simply embracing the stillness, this is a place that feels wonderfully removed from the everyday — yet remains superbly connected, with the nearby station just a short walk away.

With the added benefit of allocated parking for one car, this is a home that brings together lifestyle and location with ease.



Need to know

- Set within the beautifully maintained and peaceful surroundings of Royal Earlswood Park, offering a calm and considered lifestyle.
- Positioned on the top floor, providing a sense of privacy and an abundance of natural light throughout.
- Generous open-plan living, kitchen and dining space, ideal for both relaxed daily living and entertaining.
- Two well-proportioned double bedrooms, each offering a comfortable and restful retreat.
- Two bathrooms, thoughtfully designed to balance practicality with modern comfort.
- Exclusive access to on-site residents-only leisure facilities, including a swimming pool and gym.
- Just a short walk from the nearby train station, making commuting and travel effortless.
- Includes allocated parking for one car, completing a home that blends convenience, tranquillity and lifestyle appeal.



Gatehouse Lodge, Royal Earlswood Park, Redhill

Total Area: 65.6 m² ... 706 ft²

FOR ILLUSTRATIVE PURPOSES ONLY.

Whilst every attempt has been made to ensure the accuracy of the floor plan shown, all measurements, positioning, fixtures, features, fittings and any other data shown are an approximate interpretation for illustrative purposes only and are not to scale.

No responsibility is taken for any error, omission, miss-statement or use of data shown.

The above statement applies to both 'Still Moving London LTD' and the Company or individual displaying this floor plan.

Unauthorised reproduction prohibited.

© Still Moving London LTD (www.stillmoving.london)



Interested?

redhill@ralphjames.co.uk
01737 765 555

1

ralphjames.co.uk