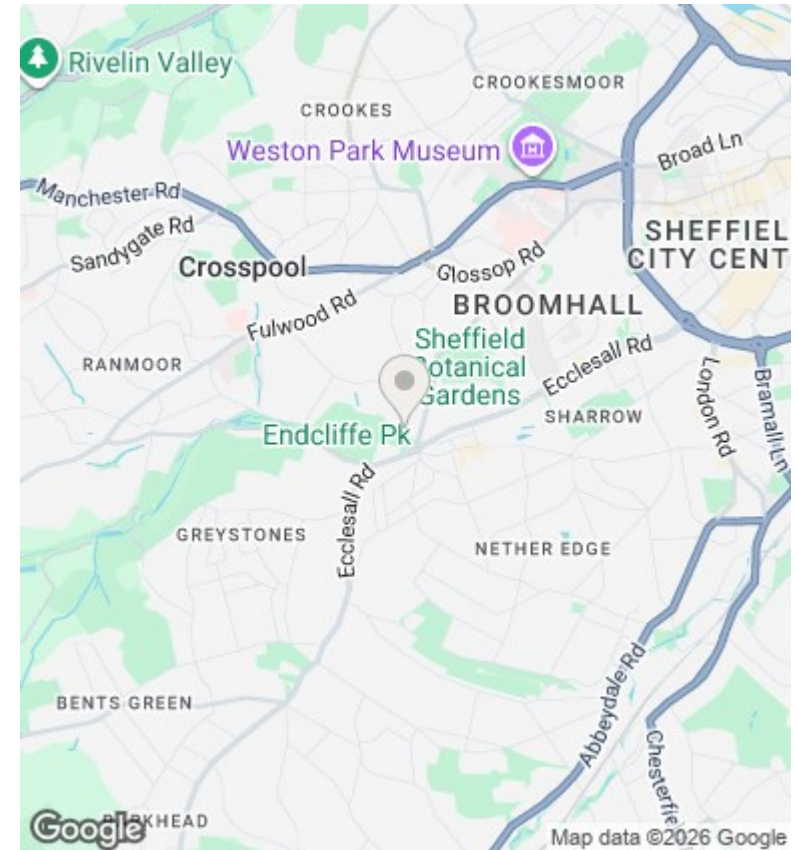
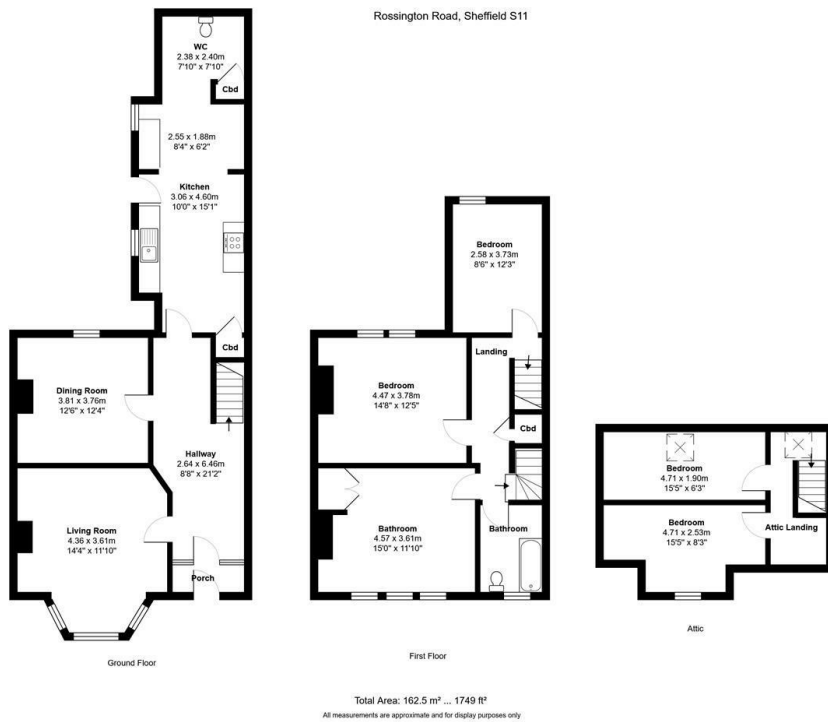




## 7 Rossington Road, Sheffield, S11 8SA

Offers Over £350,000

- No onward chain
- Beautiful period features
- South-west facing rear garden
- Easy access to many hospitals, both universities and the city centre
- 1,749ft<sup>2</sup> of floor space
- Two reception rooms
- Endcliffe Park and Sharrow Vale around the corner
- Fantastic potential
- Five bedrooms
- In the catchment area for popular schools



## Directions

## Viewings

Viewings by arrangement only. Call 01142 687777 to make an appointment.

## Council Tax Band

## EPC Rating:

Energy Efficiency Rating		
	Current	Potential
<i>Very energy efficient - lower running costs</i>		
(92 plus) <b>A</b>		
(81-91) <b>B</b>		
(69-80) <b>C</b>		
(55-68) <b>D</b>		
(39-54) <b>E</b>		
(21-38) <b>F</b>		
(1-20) <b>G</b>		
<i>Not energy efficient - higher running costs</i>		
<b>England &amp; Wales</b>	EU Directive 2002/91/EC	