



**Luna & Nova, 86 Queens Road Hersham KT12 5LN**

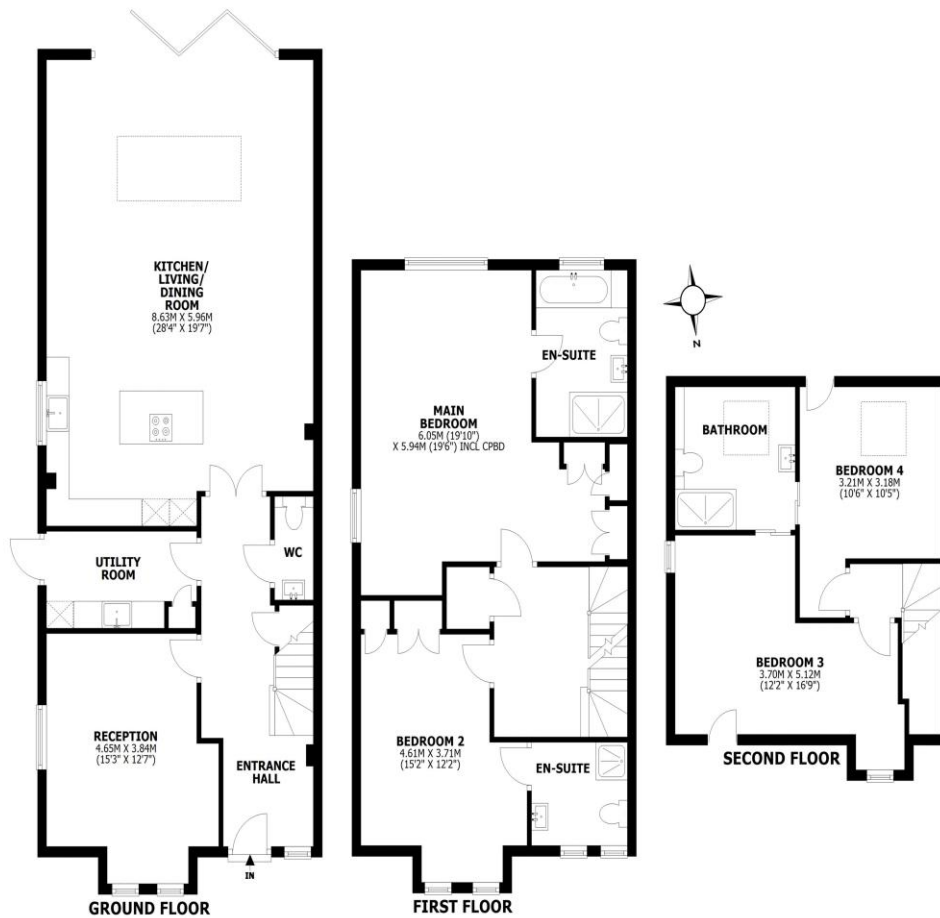
**£1,295,000**





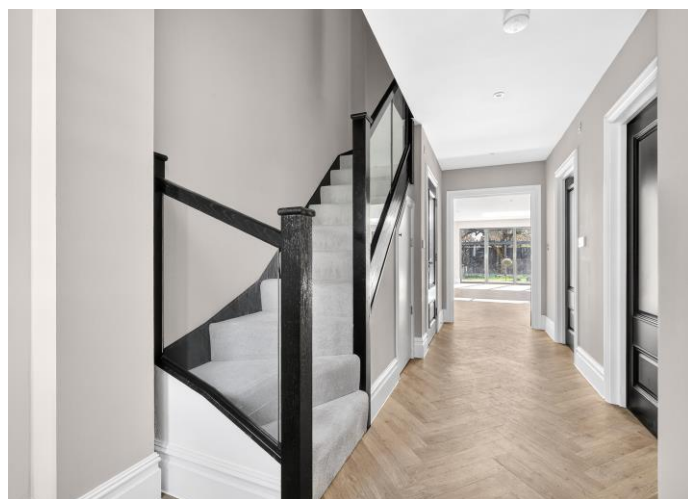
## Queens Road, Walton-on-Thames, KT12

Total area: approx. 192.1 sq. metres (2067.7 sq. feet)



This floorplan is for illustrative guidance only and is not to drawn to scale. Whilst every attempt has been made to ensure accuracy, measurements are approximate and should not be relied upon as a matter of fact. Maximum dimensions are given excluding small alcoves, etc unless otherwise stated.

Now fully completed and ready for immediate occupation, Luna and Nova stand as a landmark pair of bespoke semi-detached residences in the heart of Hersham. Offering a sophisticated, "turn-key" alternative to the standard new-build market, these homes represent a masterclass in thoughtful design and premium craftsmanship. The ground floor of each residence is anchored by a stunning Wooden Heart of Weybridge kitchen, featuring integrated Siemens appliances and a 4-in-1 boiling water tap. This social hub flows effortlessly into an expansive open-plan living and dining area, flooded with natural light from a feature roof lantern and sleek bi-fold doors. For quieter moments, a separate, well-proportioned living room to the front offers an intimate retreat. Practicality is seamlessly integrated via a dedicated utility room with a second dishwasher and ample storage, while elegant herringbone flooring, underfloor heating, and integrated air conditioning ensure year-round comfort. The upper floors have been meticulously planned to prioritise luxury and privacy. The first floor is dedicated to two substantial bedroom suites, led by a primary bedroom that serves as a true sanctuary, complete with a private dressing area and a high-specification en-suite. The second bedroom on this level is equally impressive, featuring generous built-in wardrobes and its own en-suite bathroom. This sense of space continues to the top floor, which offers a versatile arrangement of two further spacious bedrooms sharing a sophisticated Jack and Jill bathroom finished with Villeroy & Boch sanitaryware. The properties continue to impress outside with professionally landscaped, due-south facing gardens—a true suntrap perfect for alfresco entertaining. Each home provides two dedicated parking spaces, an electric car charging point, and a secure shed/bike store equipped with its own charging points. All of this is backed by a 10-year building warranty for total peace of mind. Located just a short stroll from the picturesque Hersham Green, residents can enjoy a vibrant community atmosphere with everyday conveniences including a flagship Waitrose, local boutiques, and independent cafes. For families, the properties are ideally situated near highly regarded state schools like Burhill Primary and Three Rivers Academy, alongside prestigious private institutions such as St George's College, Feltonfleet, and Notre Dame. Commuters benefit from Hersham and Walton-on-Thames stations providing fast links to London Waterloo in approximately 30 minutes, while easy access to the A3 and M25 ensures seamless travel to London's major airports. Experience the exceptional. To arrange your viewing or for further information regarding Luna or Nova, please contact our sales team today. Contact: 01932 221 331 EPC Rating: B



**AGENTS NOTES:** These details do not constitute any part of an offer or contract. In issuing them we do not have any authority to give any warranty or representation whatsoever in respect of this property. These details are provided without any responsibility on our part or the part of the vendors. No statements in these details are to be relied upon as representations of fact and purchasers should satisfy themselves by inspection or otherwise as to the accuracy of the statements contained therein.

**Equipment:** We have not tested the equipment or central heating system mentioned in these particulars and purchasers are advised to satisfy themselves as to their working order and condition.

**Measurements:** Great care is taken when measuring but measurements should not be relied upon for ordering carpets, equipment, etc.