



## Aliwal Road, SW11

£2,750 Per calendar month

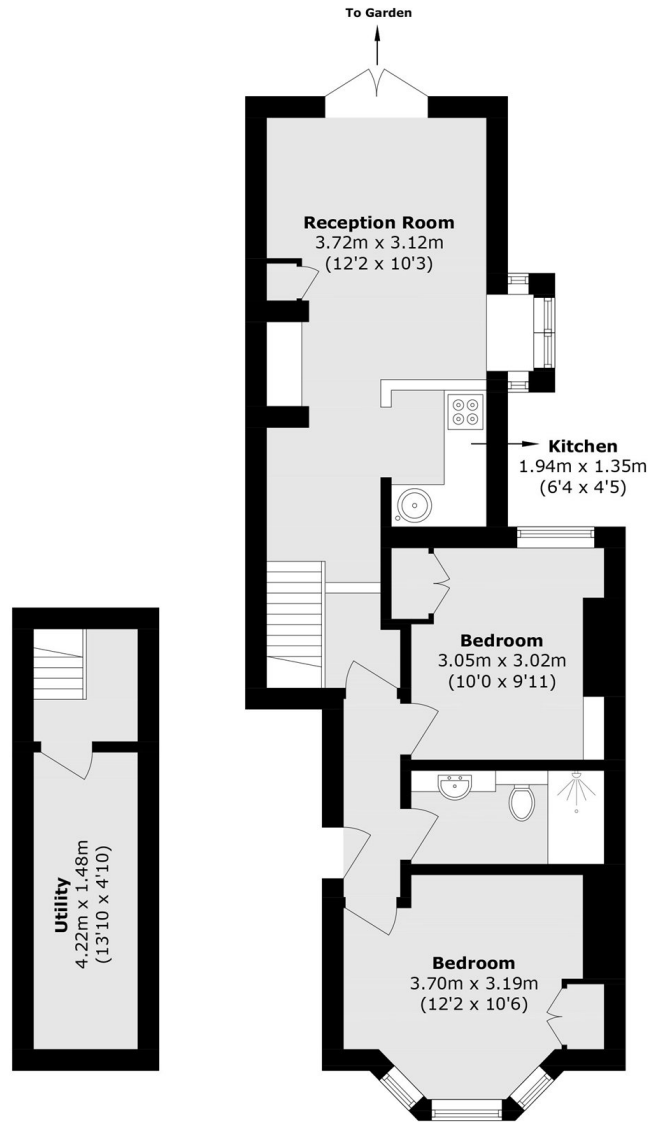
A well-presented two bedroom ground floor garden flat with an open plan kitchen, two good size bedrooms and a large utility room for storage.

The flat is located a stones throw away from Clapham Junction Station which is an ideal location to take advantage of everything on both St Johns Road and Northcote Road.

### Features

- Ground Floor Flat
- Private Garden
- Two Double Bedrooms
- Open Plan Kitchen
- Prime Location
- Ample Storage

# Aliwal Road, London, SW11



**Lower Ground Floor**

**Ground Floor**

Total area (approx.): 58.4 sq. m (628.6 sq. ft)