



Clifford Court, 24-25 Kensington Gardens Square, Bayswater

£300,000

London W2



Clifford Court, 24-25 Kensington Gardens Square

Bayswater, London W2

Charming studio in Victorian conversion with lift access in Bayswater and access to tranquil communal garden.

Council Tax band: B

Tenure: Leasehold

EPC Energy Efficiency Rating: C

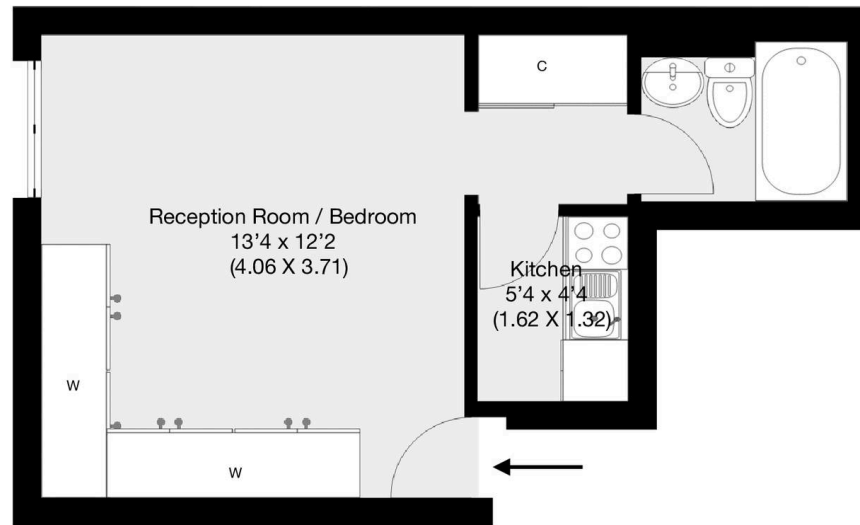
EPC Environmental Impact Rating: G





24-25 Kensington Gardens Square, London, W2

Approximate Gross Internal Area 22.4 sqm / 241 sqft



5th Floor



Garrison Estates

20 College Parade, Salusbury Road, Queens Park – NW6 6RN

020 4511 4820 • contact@garrisonestates.co.uk • www.garrisonestates.co.uk/