



Tithe Barn Close, Kingston Upon Thames

V&H
HOMES

£670,000

Tithe Barn Close

Kingston Upon Thames

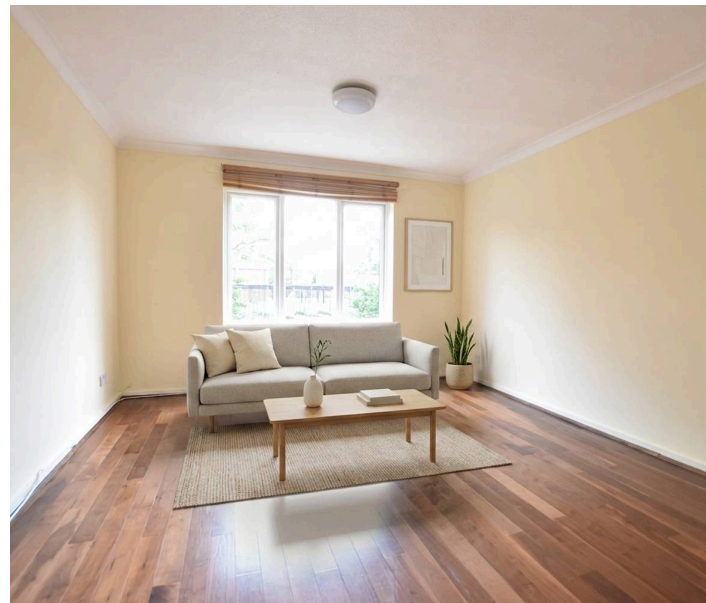
Council Tax band: E

Tenure: Freehold

EPC Energy Efficiency Rating: D

EPC Environmental Impact Rating: E

- Four Bedroom Town House
- Kitchen/Dining Room
- Family Bathroom
- Paved Rear Garden
- Off Street Parking & Estate Permits Available
- Approximately 500 yards to Station
- No Chain





Tithe Barn Close

Kingston Upon Thames

A spacious four bedroom town house over three floors with off street parking and a paved rear garden. The property is vacant and offered for sale with NO CHAIN and can accommodate a swift purchase.

Tithe Barn Close is a quiet residential road centrally located for Kingston Town Centre and mainline railway station. Excellent for a family home or a Buy to Let.

The current layout has a large fitted kitchen/breakfast room and a double bedroom on the ground floor, a lounge and bedroom plus a family bathroom on the first floor and a further two double bedrooms and a WC on the second floor. All rooms are spacious and offer a flexible layout for multi generational families or sharers.

There is off street parking for one vehicle to the front of the property and a paved garden with a rear access gate.

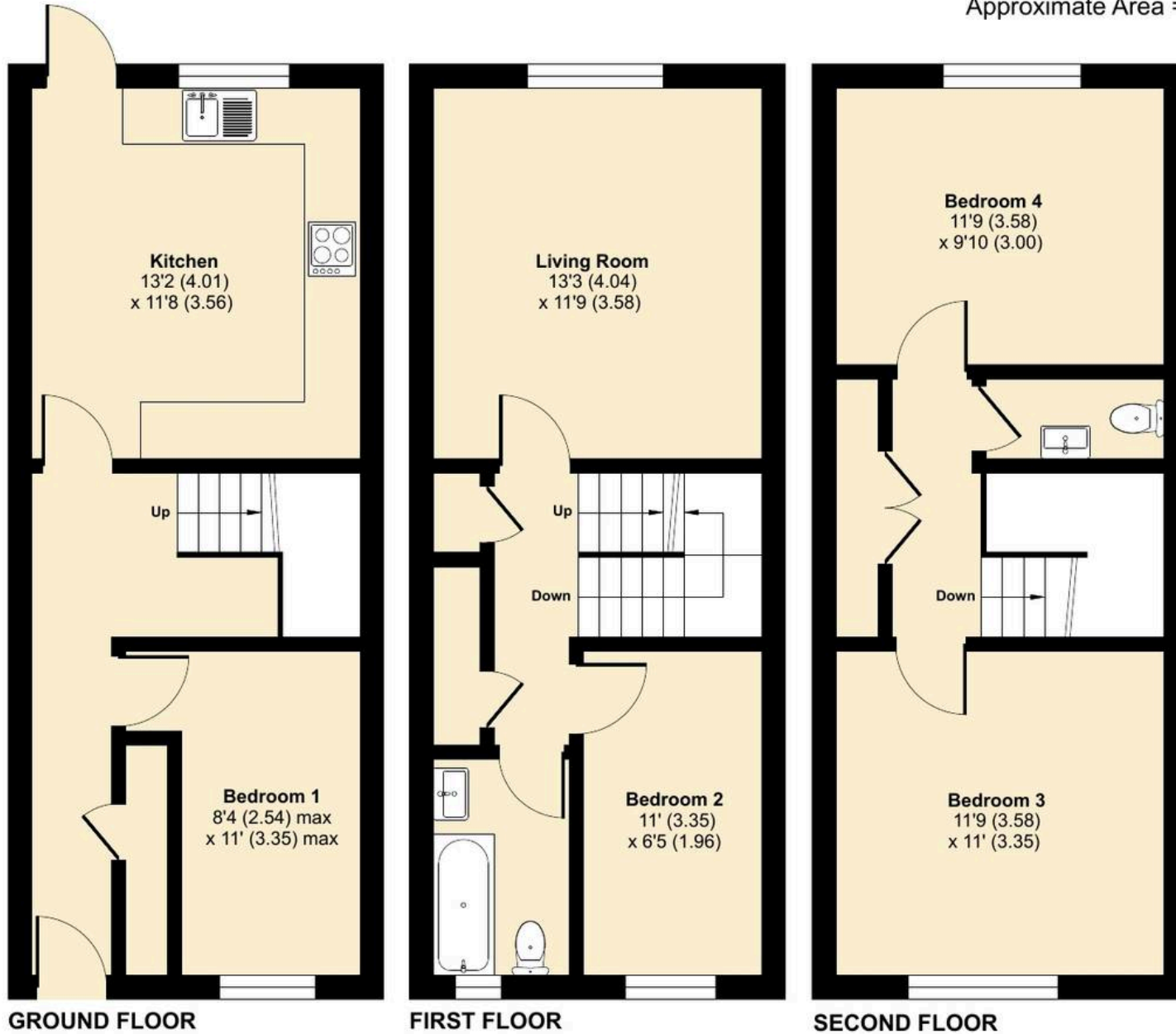
Tithe Barn Close is a quiet residential road and is located perfectly to enjoy everything Kingston has to offer with the town centre less than 500 yards in one direction and Kingston Train Station just over 500 yards in the other direction.



Tithe Barn Close, Kingston Upon Thames, KT2

Approximate Area = 1104 sq ft / 102.5 sq m

For identification only - Not to scale



Floor plan produced in accordance with RICS Property Measurement Standards incorporating International Property Measurement Standards (IPMS2 Residential). © nche.com 2024. Produced for V&H Homes. REF: 1194543

