



## Chapter Chambers, SW1P

£499,999

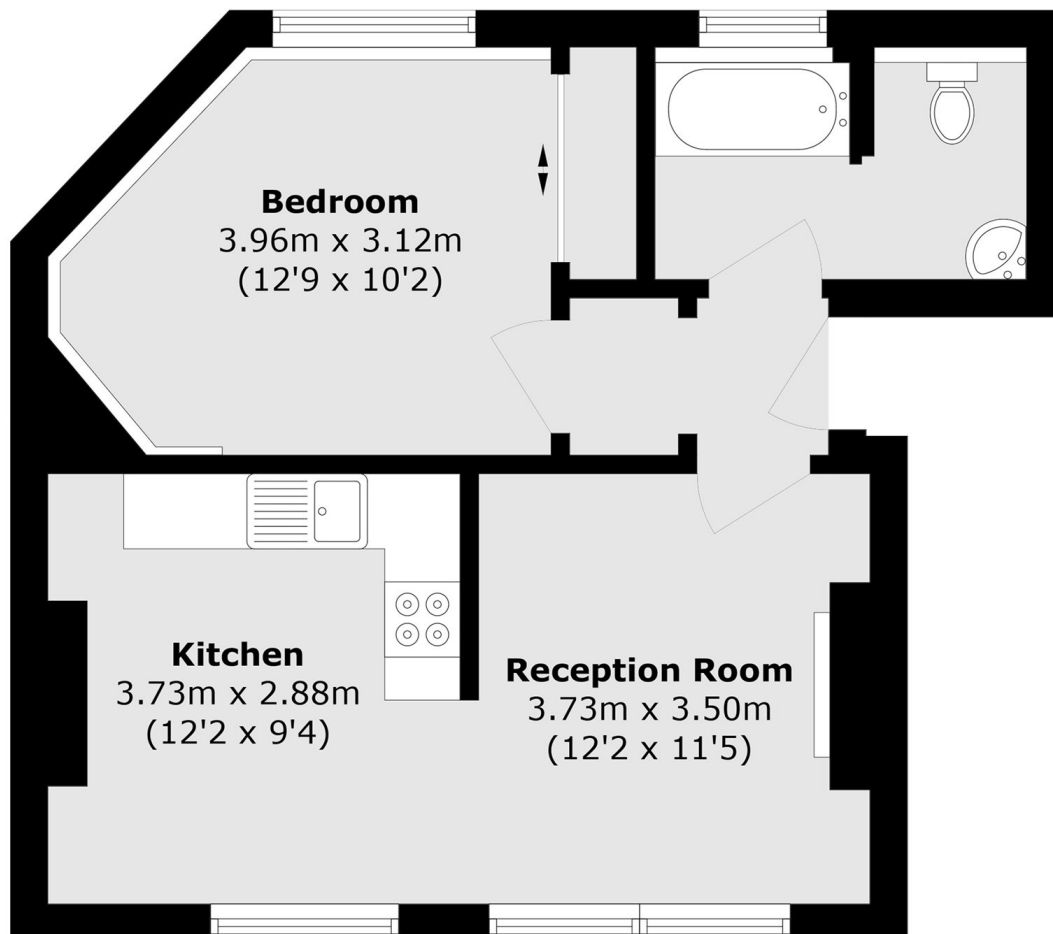
This spacious one bedroom flat is excellently located in the heart of Westminster and would make a wonderful home. The property comprises of an open plan kitchen and living space, one double bedroom with ample storage and a large bathroom. This flat is on the first floor and is flooded with natural light.

Chapter Street is perfectly located, a short walk from the river as well as both Pimlico and Victoria stations. With the supermarkets and cafés of Warwick way across the road, you have everything you need nearby.

### Features

- One Bedroom
- One Bathroom
- First Floor
- Open Plan
- Plenty Of Storage
- Westminster

# Chapter Chambers, London, SW1P



Total area (approx.): 45.8 sq. m (492.9 sq. ft)

## First Floor