



HOMES BY VICTORIA
ESTATE AGENCY

Welbrook House, Green Lane, Callow Hill, Redditch, B97 5PJ

Offers In Region Of £1,200,000

🛏 5 🚿 2 🚗 3



homesbyvictoria.co.uk
victoria@homesbyvictoria | 07833 136521

FOR M HOMES MIDLANDS LIMITED trading as Homes By Victoria Company Number: 13688840 VAT no: 470190115



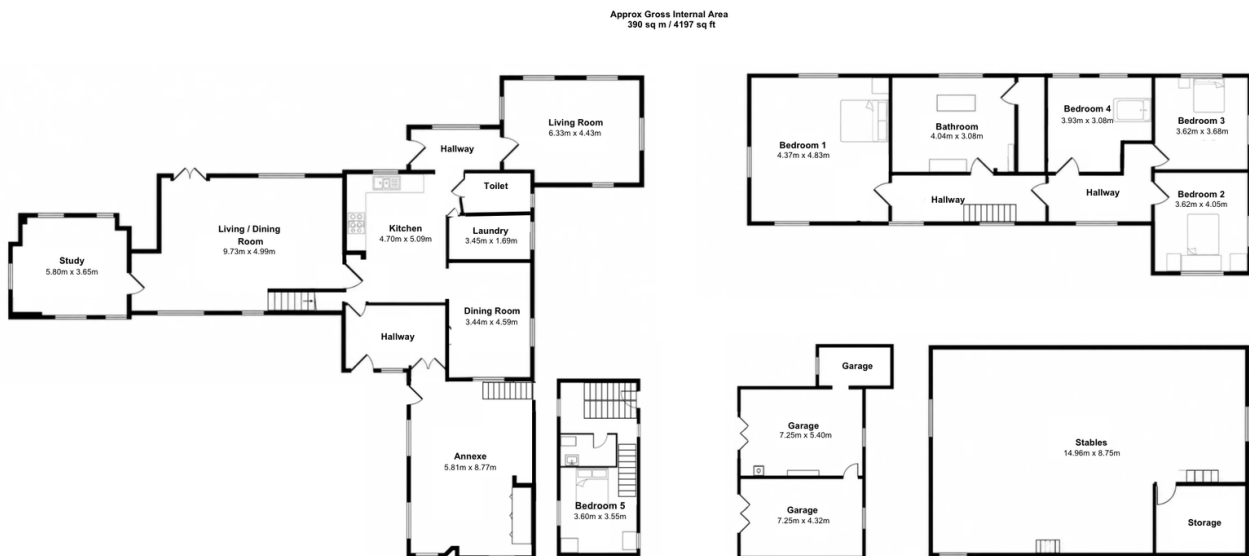
HOMES BY VICTORIA
ESTATE AGENCY



HOMES BY VICTORIA

ESTATE AGENCY

- Distinguished 17th-century Grade II listed country residence rich in period character and original features.
- Enjoying panoramic views across the rolling Worcestershire countryside.
- Stunning farmhouse-style kitchen renovated in 2020, featuring an AGA and Belfast sink.
- Self-contained annexe potential with independent access, bedroom and bathroom suite.
- Former stables, outbuildings and land offering potential for equestrian or smallholding use (subject to consents)
- Set within approximately 3.5 acres of beautifully maintained gardens and grounds.
- Extensive and versatile accommodation ideal for modern family living and entertaining.
- Three impressive reception rooms with exposed beams, inglenook fireplaces and log-burning stoves.
- Four generous double bedrooms plus spacious family bathroom.
- Private courtyard approach, substantial double garage, extensive parking and a highly sought-after rural setting.



This floorplan is only for illustrative purposes and is not to scale. Measurements of rooms, doors, windows, and any items are approximate and no responsibility is taken for any error, omission or mis-statement. Icons of items such as bathroom suites are representations only and may not look like the real items.

Welbrook House is a distinguished 17th-century Grade II listed country residence set within approximately 3.5 acres of beautifully maintained grounds on the rural outskirts of Redditch, commanding breathtaking panoramic views across the rolling Worcestershire countryside. Rich in history and architectural character, this exceptional home seamlessly combines period grandeur with modern family living, offering an enviable country lifestyle with particular appeal to those seeking space, privacy and potential for equestrian or smallholding pursuits.