

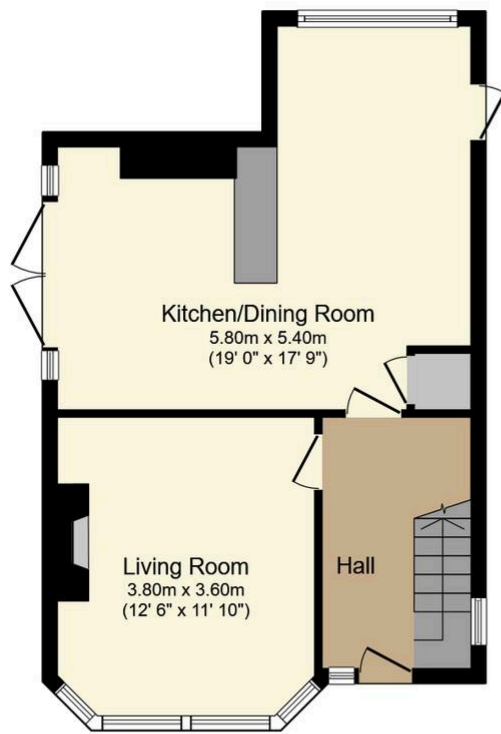


Wood Bank Ruthin Road, Gwernymynydd, CH7 5LQ

£405,000

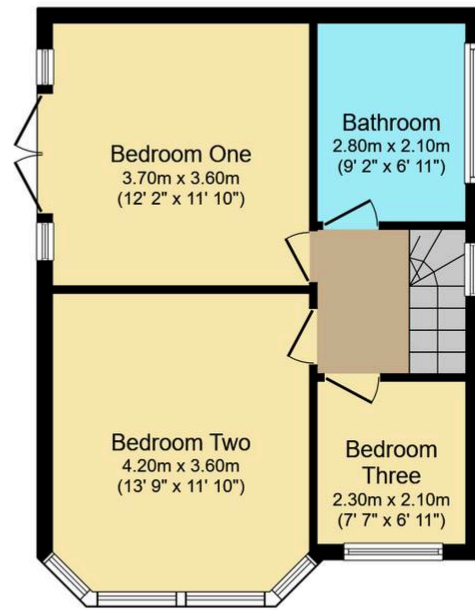
Available with No Onward Chain - This attractive detached property in the sought after village of Gwernymynydd offers, three good sized bedrooms, one with a Juliet balcony with spectacular views over Moel Famau and the surrounding countryside, a large and modern family bathroom, living room, spacious and modern open plan kitchen/diner with french doors leading out to the patio area, an expansive garden with both lawned and patio areas and a large driveway with ample off road parking as well as a single detached garage.

This stylish property really must be viewed to appreciate the extent of the views and quality of the renovation.



Ground Floor

Floor area 49.5 sq.m. (532 sq.ft.)



First Floor

Floor area 44.8 sq.m. (482 sq.ft.)

Total floor area: 94.3 sq.m. (1,015 sq.ft.)

This floor plan is for illustrative purposes only. It is not drawn to scale. Any measurements, floor areas (including any total floor area), openings and orientations are approximate. No details are guaranteed, they cannot be relied upon for any purpose and do not form any part of any agreement. No liability is taken for any error, omission or misstatement. A party must rely upon its own inspection(s). Powered by www.Propertybox.io

williams
estates



YOUR FREE
PROPERTY REPORT



WE OFFER FREE ADVICE

MORTGAGES - SURVEYS - SOLICITORS

