



Hawthorne Crescent, SE10

£350,000

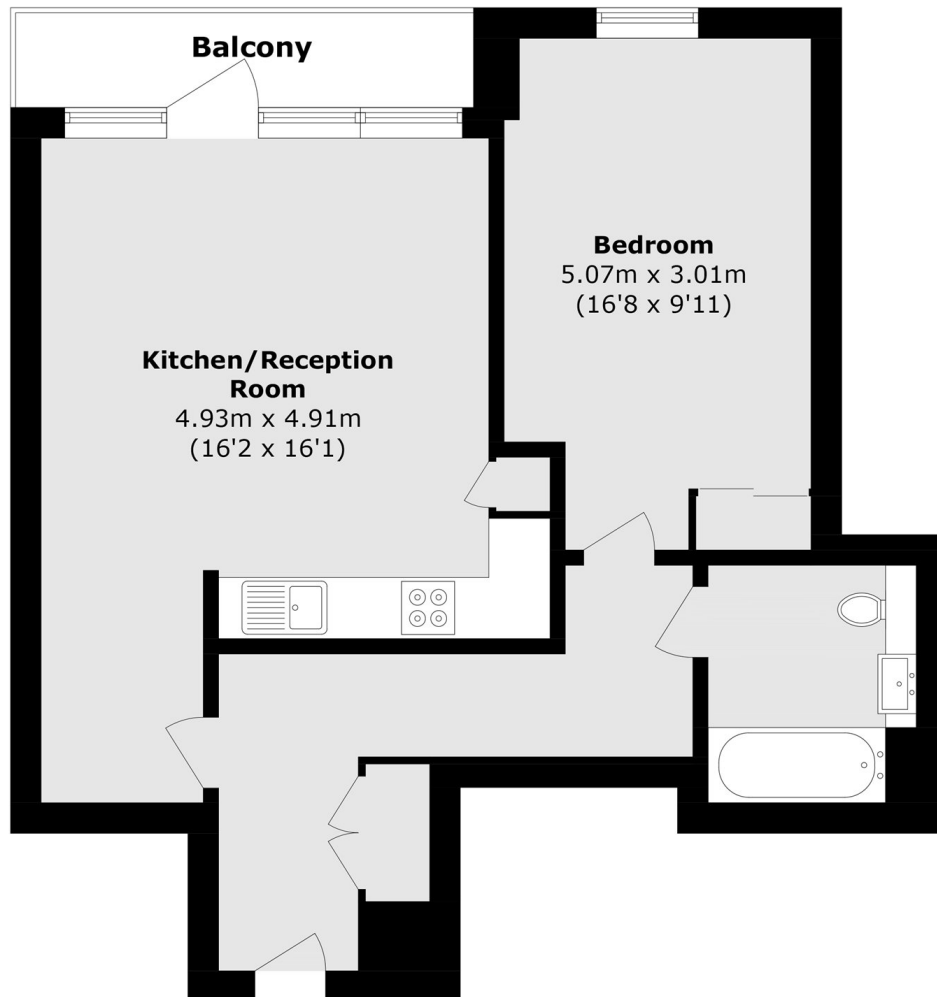
A well presented one double bedroom apartment finished to a high standard and is situated in a sought after location which further benefits from a private balcony and communal gardens.

Greenwich Square is an immensely popular development located in East Greenwich, on the corner of Hawthorne Crescent and Vanbrugh Hill. Close to the local shops and restaurants of Greenwich village, the development also benefits from on-site Greenwich leisure facilities and library (membership not included). Well-connected by mainline rail, DLR, and Jubilee line.

Features

- Sought After Location
- Private Balcony
- Modern
- Ideal First Purchase
- Communal Gardens
- No Work Required

Hawthorne Crescent, Greenwich, SE10



Total area (approx.): 56.7 sq. m (610.3 sq. ft)
Balcony area (approx.): 5.2 sq. m (55.9 sq. ft)