



## Land at Rear of 1 Pound Cottage

London Road, Blewbury, Oxfordshire. OX11 9NY

# Land at Rear of 1 Pound Cottage

London Road, Blewbury

A rare opportunity to acquire a unique single building plot in a highly sought-after village location, with frontage onto Pilgrims Way, Blewbury, and stunning countryside views.

The plot measures approximately 48 ft x 19 ft (14.6m x 5.7m) and is currently occupied by a detached garage measuring 19 ft 7 in x 12 ft 6 in (6m x 3.8m).

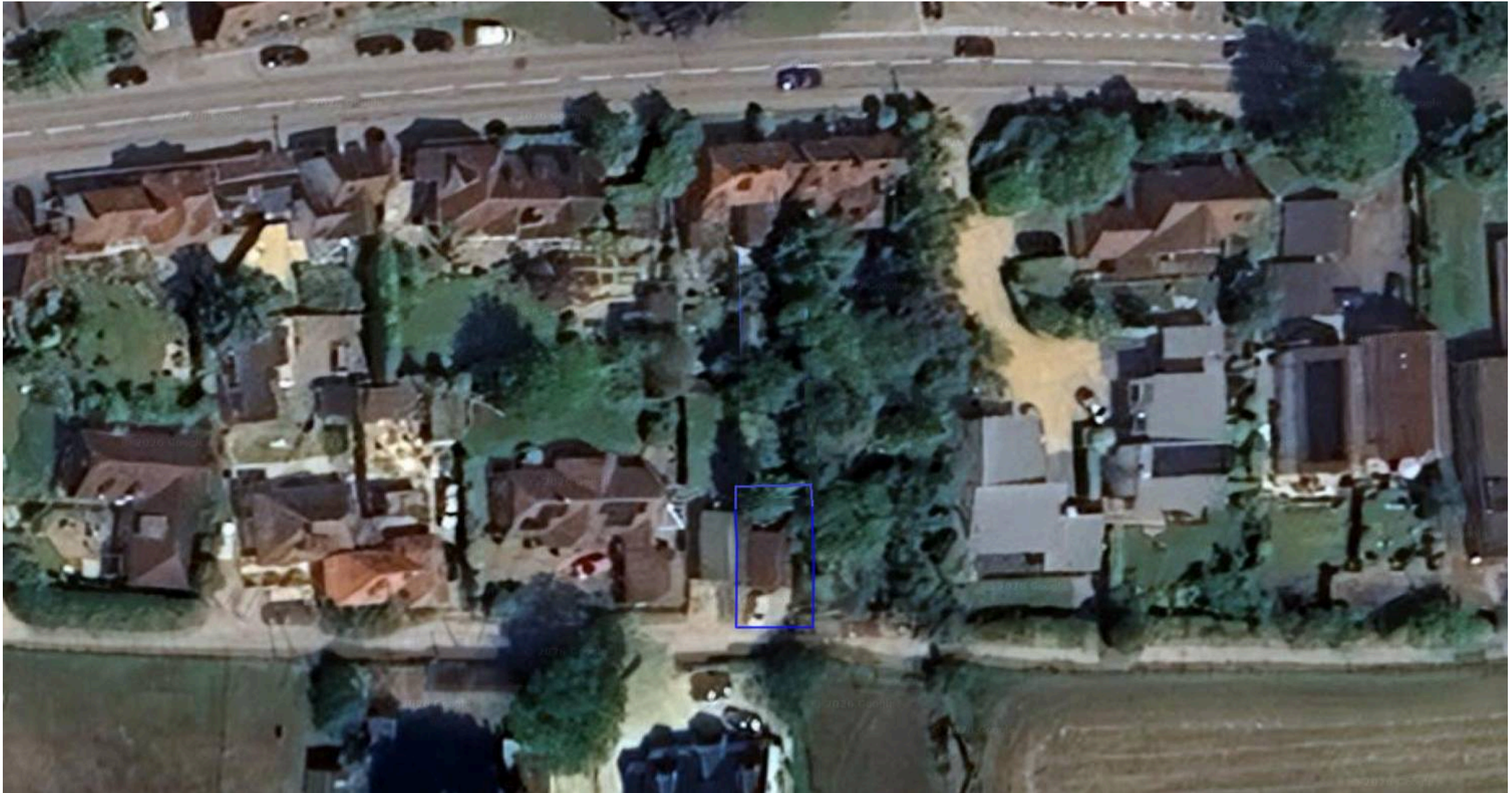
Pilgrims Way is a quiet, unmade private lane serving only a small number of houses, surrounded by open countryside and located on the edge of this popular Downland village.

Blewbury is one of the most desirable villages in South Oxfordshire, renowned for its attractive period properties, excellent community amenities and convenient transport links. The village offers a shop, primary school, farm shop and public house, and benefits from close proximity to Didcot Parkway (approximately 45 minutes to London Paddington).

The charming market town of Wallingford, around 6 miles away, provides more extensive facilities including a Waitrose, independent shops, doctors, dentists and a community hospital. Oxford, Newbury, Reading and Swindon are all easily accessible via the A34 and wider motorway network.

Blewbury's position on the edge of the Downs offers excellent access to walking and riding routes, making this an exceptional location for both lifestyle and convenience.





220 Broadway, Didcot  
Oxfordshire, OX11 8RS  
T: 01235 511406  
E: [didcot@hodsons.co.uk](mailto:didcot@hodsons.co.uk)  
[www.hodsons.co.uk](http://www.hodsons.co.uk)