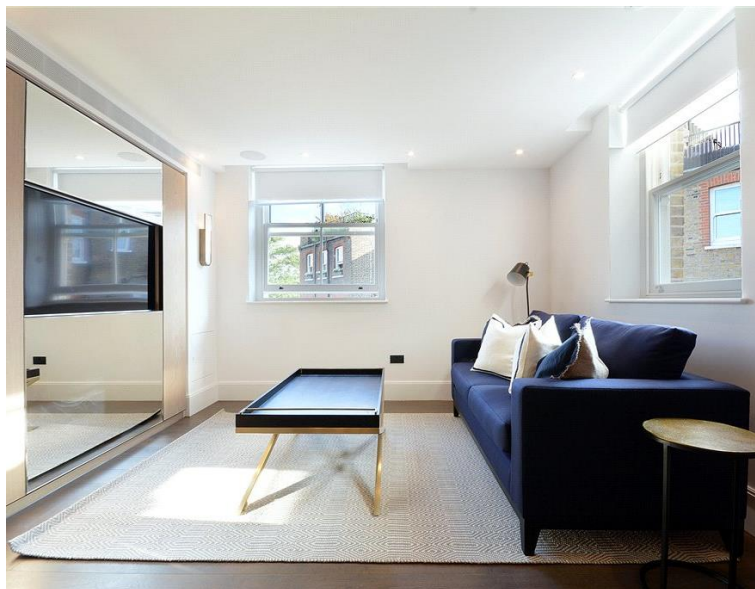
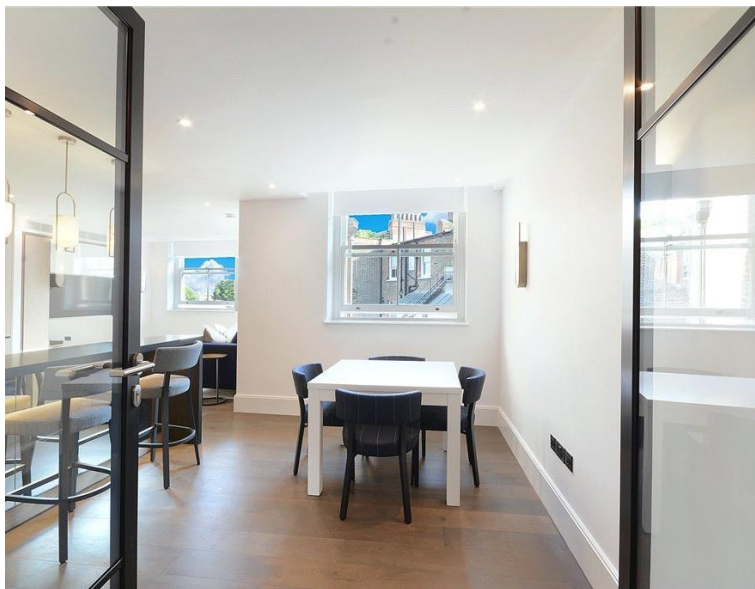


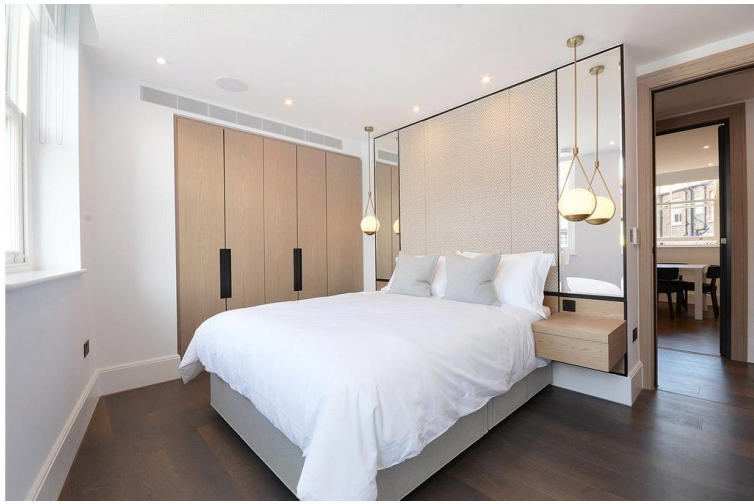


Cresswell Gardens, London SW5

Price £965 per week - Furnished







Description

A beautifully presented third floor apartment, which has been interior designed throughout by TH2 Designs. Accommodation comprises two double bedrooms, one shower room, reception room and open plan kitchen with seating area, fully fitted with Miele and Neff appliances. The apartment also benefits from comfort cooling and heating in the reception room and underfloor heating to shower room and hallway.

One Brompton is a stunning development benefitting from a full concierge service, a lift to all floors, CCTV security system and audio visual entry system. The Old Brompton Road is ideally situated for the fashionable shops and restaurants of both Knightsbridge and Chelsea, as well as transport links across central London.

We understand that cooling / heating is delivered via a communal system for which separate charges apply.

Council tax band: F. Rent is payable on a monthly basis, and you may be required to pay more than a month's rent in advance for tenancies with annual rents exceeding £100,000. You will be required to pay a 1 week holding deposit following a successful offer. Tenancies with annual rents up to £50,000 will require a 5 weeks' security deposit, while those exceeding this threshold will require a 6 weeks' deposit. Utility bills, council tax, telephone line and broadband are not included in the rent. As well as paying the rent, you may also be required to make some additional permitted payments. If your tenancy does not qualify as an APT, additional fees may apply. Please visit jll.co.uk/fees for details of fees that may be payable when renting a property. To check broadband and mobile phone coverage please visit Ofcom here ofcom.org.uk/phones-telecoms-and-internet/advice-for-consumers/advice/ofcom-checker

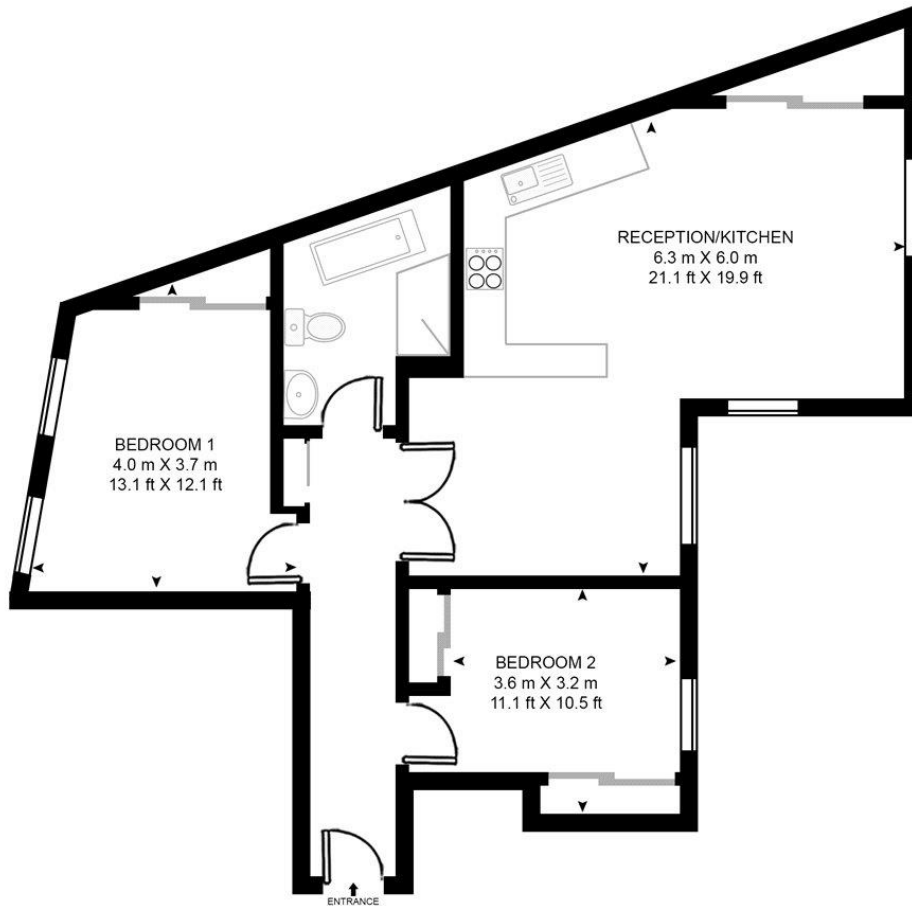
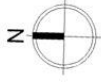
- 2 Double bedrooms
- 1 Bathroom
- Large reception area
- Open plan kitchen and dining area
- Third floor
- Lift
- Interior designed throughout by TH2 designs
- Day concierge service
- Approx. 765 sq ft (71 sq m)
- Furnished

Floorplan

765 sq ft | 71 sq m

CRESSWELL GARDENS

APPROXIMATE GROSS INTERNAL FLOOR AREA 765 SQ.FT (71.2 SQ.M)



THIRD FLOOR

HDVA

This floor plan has been defined by the RICS Code of Measurement. This floor plan and all others are for approximate representative purposes only and upon usage is agreed to as such by the client.

WWW: hdvirtualart.com | TEL: 0203.974.1567 | EMAIL: info@hdvirtualart.com

Chelsea
2 Cale Street,
London SW3 3QU
+4420 7399 5010
saleschelsea@jll.com

Urban living, your way.

jll.co.uk/residential

© 2019 Jones Lang LaSalle IP, Inc. All rights reserved. All information contained herein is from sources deemed reliable; however, no representation or warranty is made to the accuracy thereof.

