

Tolcarne Drive

Pinner • • HA5 2DL
Asking Price: £450,000



coopers
est 1986

Tolcarne Drive

Pinner • • HA5 2DL

This bright and beautifully presented first-floor, two-bedroom maisonette boasts a generous private garden, garage, and driveway. Ideally situated within the highly sought-after Harlyn Primary School catchment area, the property is just a short walk from Northwood Hills, where residents can enjoy a wide range of shops, restaurants, cafés, and convenient access to the Metropolitan Line station.

First Floor Maisonette

Large Private Garden

Private Driveway

Family Bathroom

Great School Catchment Area

Two Double Bedrooms

Modern Fitted Kitchen

Walking Distance to Northwood Hills

Close To Metropolitan Line

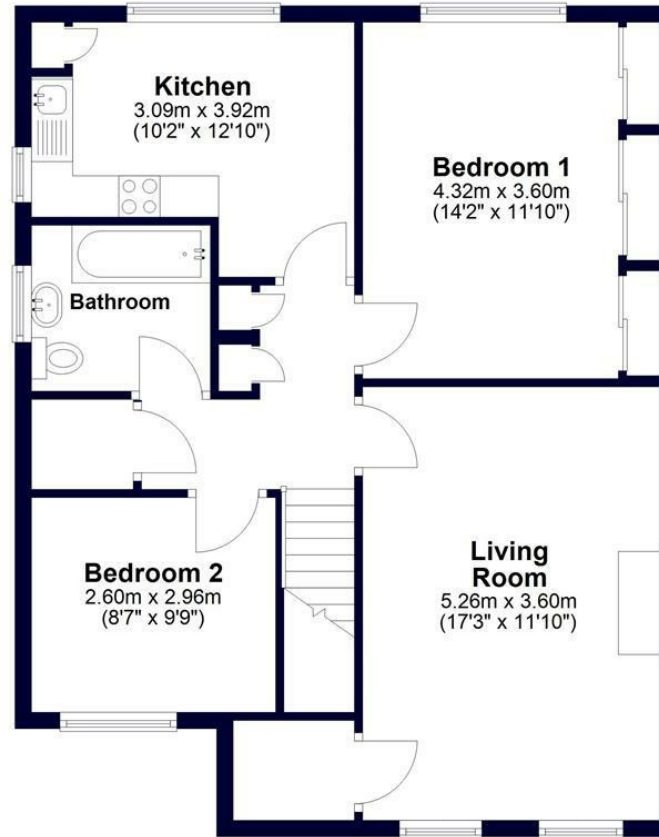
Approx 803 sq.ft

These particulars are intended as a guide and must not be relied upon as statements of fact. Your attention is drawn to the Important Notice on the last page.

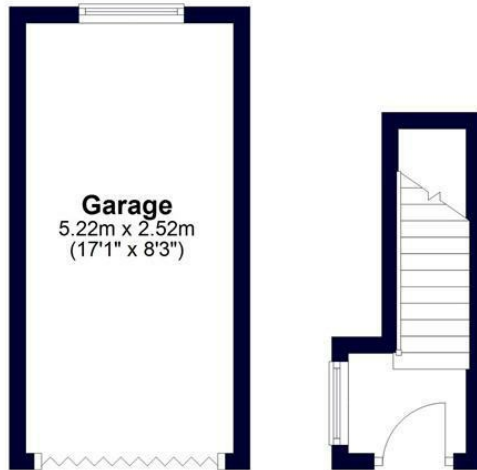




First Floor
Approx. 70.6 sq. metres (760.1 sq. feet)



Ground Floor
Approx. 4.0 sq. metres (42.7 sq. feet)
(excluding Garage)



Total area: approx. 74.6 sq. metres (802.9 sq. feet)

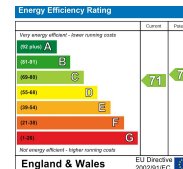


Whilst every effort has been made to ensure the accuracy of this floor plan, measurements of doors, windows, rooms and other items are approximate and no responsibility is taken for any errors. This plan is for illustrative purposes only and should be used as such by any prospective purchaser.
©Property Pot. Produced on behalf of Coopers Residential.



18 Bridge Street, Pinner,
Middlesex, HA5 3JF
pinner@coopersresidential.co.uk

CoopersResidential.co.uk



Important Notice: These particulars, whilst believed to be accurate are set out as a general outline only for guidance and do not constitute any part of an offer or contract. Intending purchasers should not rely on them as statements or representation of fact, but must satisfy themselves by inspection or otherwise has the authority to make or give any representation or warranty in respect of the property.