



## Samuel Close, SE14

£1,600 Per calendar month

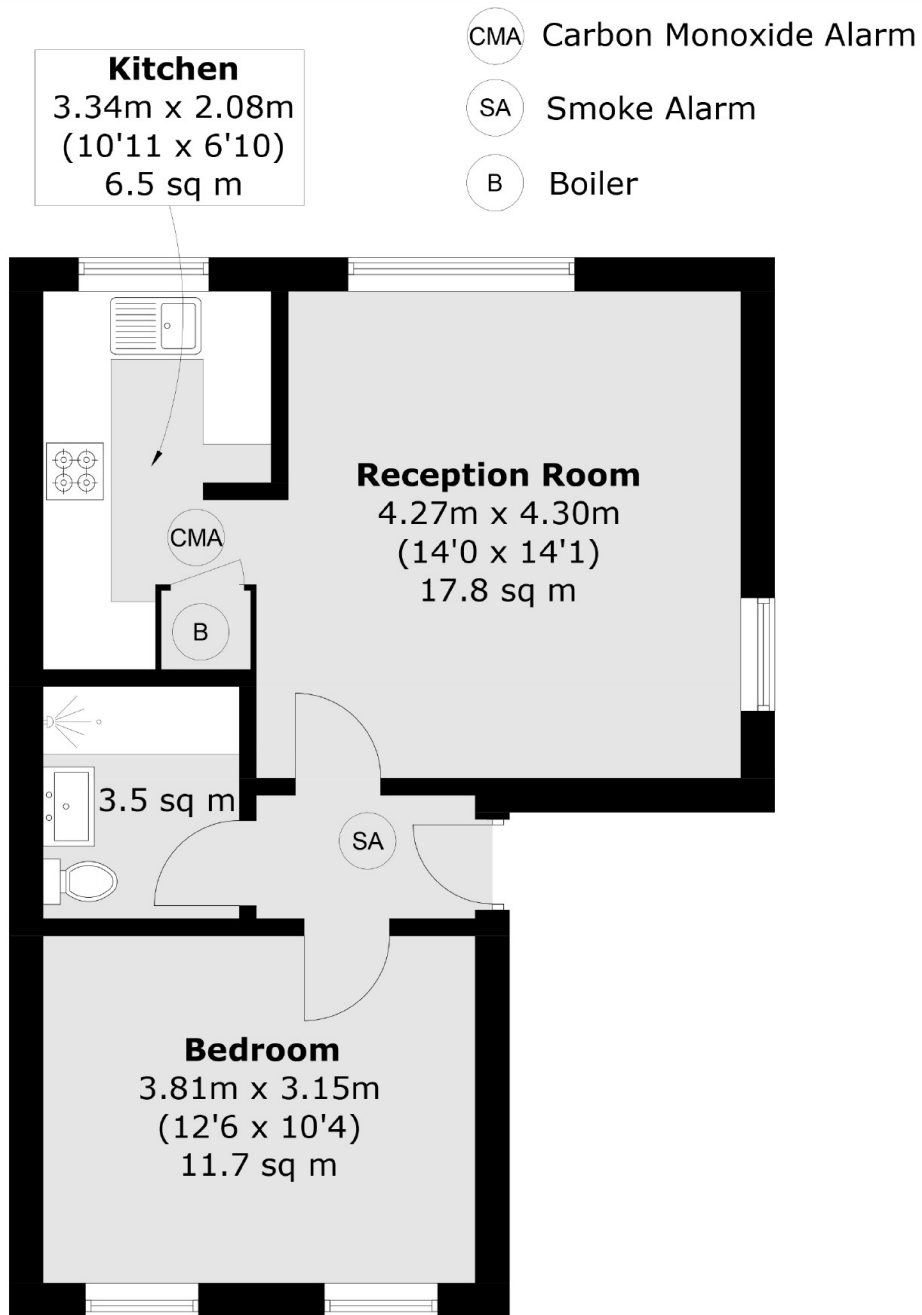
A well presented purpose built first floor one bedroom flat located in the popular Samuel Close with excellent transport links and close to all local amenities.

Samuel Close is located close to New Cross Gate Station offering superb links in to East and Central London and is also well located for New Cross' local amenities including Sainsbury's.

### Features

- Purpose Built
- First Floor Flat
- One Double Bedroom
- Modern Features Throughout
- Close To Stations
- Furnished

# Samuel Close, London, SE14



## First Floor

Total area (approx.): 43.5 sq. m (468.2 sq. ft)