



Lyndale Avenue, Osbaldwick, York, YO10 3QB

- Semi-Detached Bungalow
- Generous Parking and Detached Garage
- South-Facing Private Rear Garden
- Council Tax Band C
- Partially Extended for Enhanced Living Space
- Exceptionally Well Maintained Throughout
- Sought-After Osbaldwick Location

£300,000



Lyndale Avenue, Osbaldwick, York, YO10 3QB

DESCRIPTION

This beautifully maintained and partially extended two-bedroom semi-detached bungalow sits on the popular Lyndale Avenue in Osbaldwick, a highly regarded village-style suburb to the east of York. Offering generous accommodation, a south-facing rear garden, and excellent parking, the property has been exceptionally well cared for and presents as a warm, welcoming home throughout.

The layout is practical and well balanced. A bright bay-fronted living room forms the main living space, complete with a gas fireplace. The extended kitchen provides a good range of units, integrated appliances and direct access to the garden. An inner hall leads to a versatile conservatory/garden room with dual radiators, creating a pleasant year-round space for dining, relaxing or hobbies.

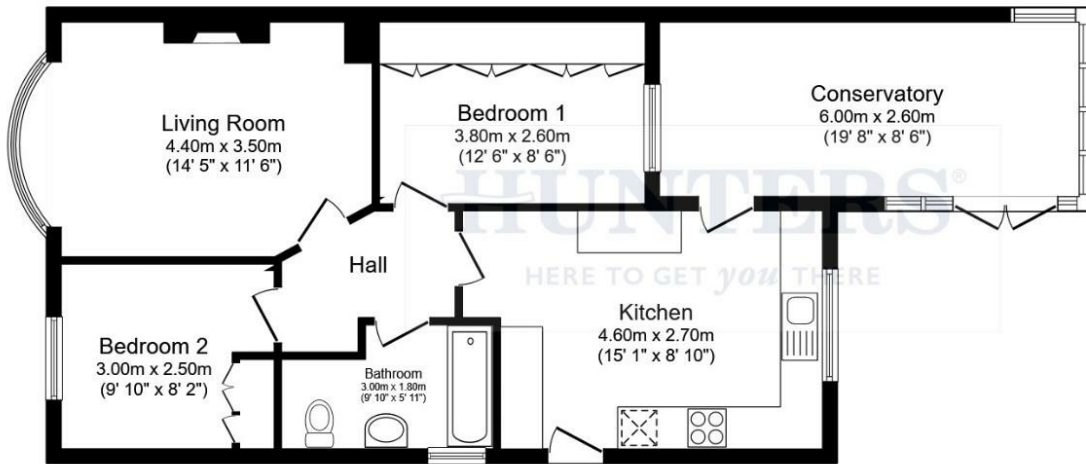
There are two generous double bedrooms, both with fitted wardrobes, along with a spacious three-piece bathroom with shower attachment. The standard of upkeep is evident throughout, making the property ready to move into while still offering scope to personalise.

Externally, the home continues to impress. The front garden is neatly presented, with a driveway offering ample off-street parking and leading to a detached garage with power and lighting. The enclosed south-facing rear garden includes a lawn, paved seating area, outside tap and space for a shed.

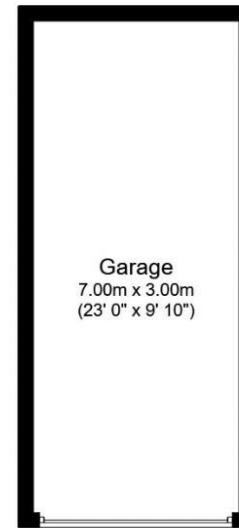
Osbaldwick remains a sought-after location with excellent access to local shops, schools, bus routes, Monks Cross/Vangarde, and the wider road network including the A64. With its well-kept accommodation, extended living space and attractive plot, this bungalow represents a superb opportunity in one of York's most popular residential areas.







Floor Plan



Garage

Total floor area 97.3 sq.m. (1,047 sq.ft.) approx

This floor plan is for illustrative purposes only. It is not drawn to scale. Any measurements, floor areas (including any total floor area), openings and orientation are approximate. No details are guaranteed, they cannot be relied upon for any purpose and they do not form part of any agreement. No liability is taken for any error, omission or misstatement. A party must rely upon its own inspection(s). Powered by www.focalagent.com

Viewings

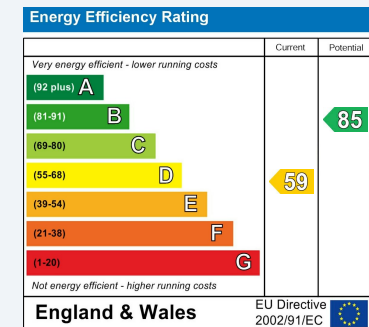
Please contact york@hunters.com, if you wish to arrange a viewing appointment for this property or require further information.

Valuations

For a valuation of your property, please email the team with your property details, contact information and the times you are available.

ENERGY PERFORMANCE CERTIFICATE

The energy efficiency rating is a measure of the overall efficacy of a home. The higher the rating the more energy efficient the home is and the lower the fuel bills will be.



These particulars are intended to give a fair and reliable description of the property but no responsibility for any inaccuracy or error can be accepted and do not constitute an offer or contract. We have not tested any services or appliances (including central heating if fitted) referred to in these particulars and the purchasers are advised to satisfy themselves as to the working order and condition. If a property is unoccupied at any time there may be reconnection charges for any switched off/disconnected or drained services or appliances - All measurements are approximate.

THINKING OF SELLING? If you are thinking of selling your home or just curious to discover the value of your property, Hunters would be pleased to provide free, no obligation sales and marketing advice. Even if your home is outside the area covered by our local offices we can arrange a Market Appraisal through our national network of Hunters estate agents.