



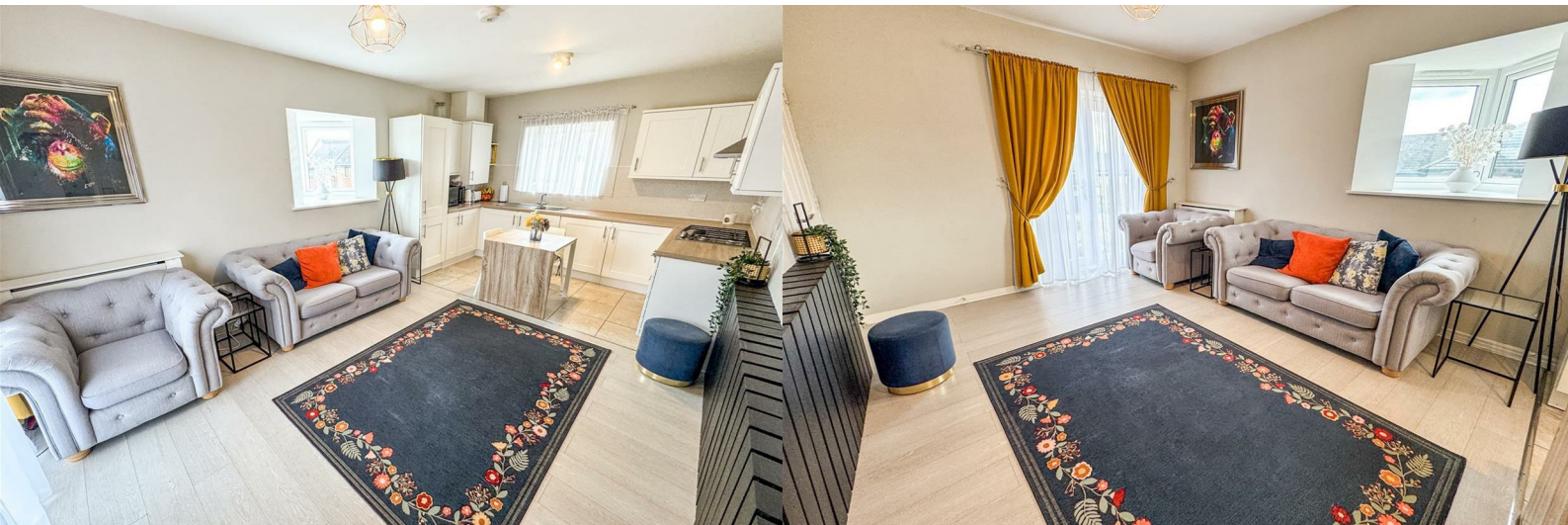
**STUART  
CHARLES**  
ESTATE AGENTS



## Slough Close

, Corby, NN17 5AU

£195,000



# Slough Close

, Corby, NN17 5AU

£195,000



## Entrance Lobby

Foot of stairs leading to the main floor and shoe room.

## Shoe Room

Converted from the garage into a wonderful storage and changing room.

## Converted garage.

19'5" x 9'3" (5.94 x 2.84)

Currently used as a gym with lighting and power.

## Stairway.

Stairway to first floor.

## Lounge/Kitchen/Diner

19'0" x 11'9" (5.8 x 3.6)

A wonderful open plan Lounge and kitchen/diner complete with dual aspect windows, patio doors with Juliette balcony and a fully fitted contemporary kitchen.

## Hallway

## Bedroom one.

9'10" x 15'1" (3 x 4.6)

Master bedroom with office space and double glazed window to front.

## Bedroom two.

8'10" x 15'1" (2.7 x 4.6)

Bedroom two is a favourable double room with double glazed window to front elevation.

## Family bathroom.

A delightful three piece suite featuring bath, wash basin and low level cistern.

## Loft space.

Priors hall service charge is circa £250 a year.



## Road Map



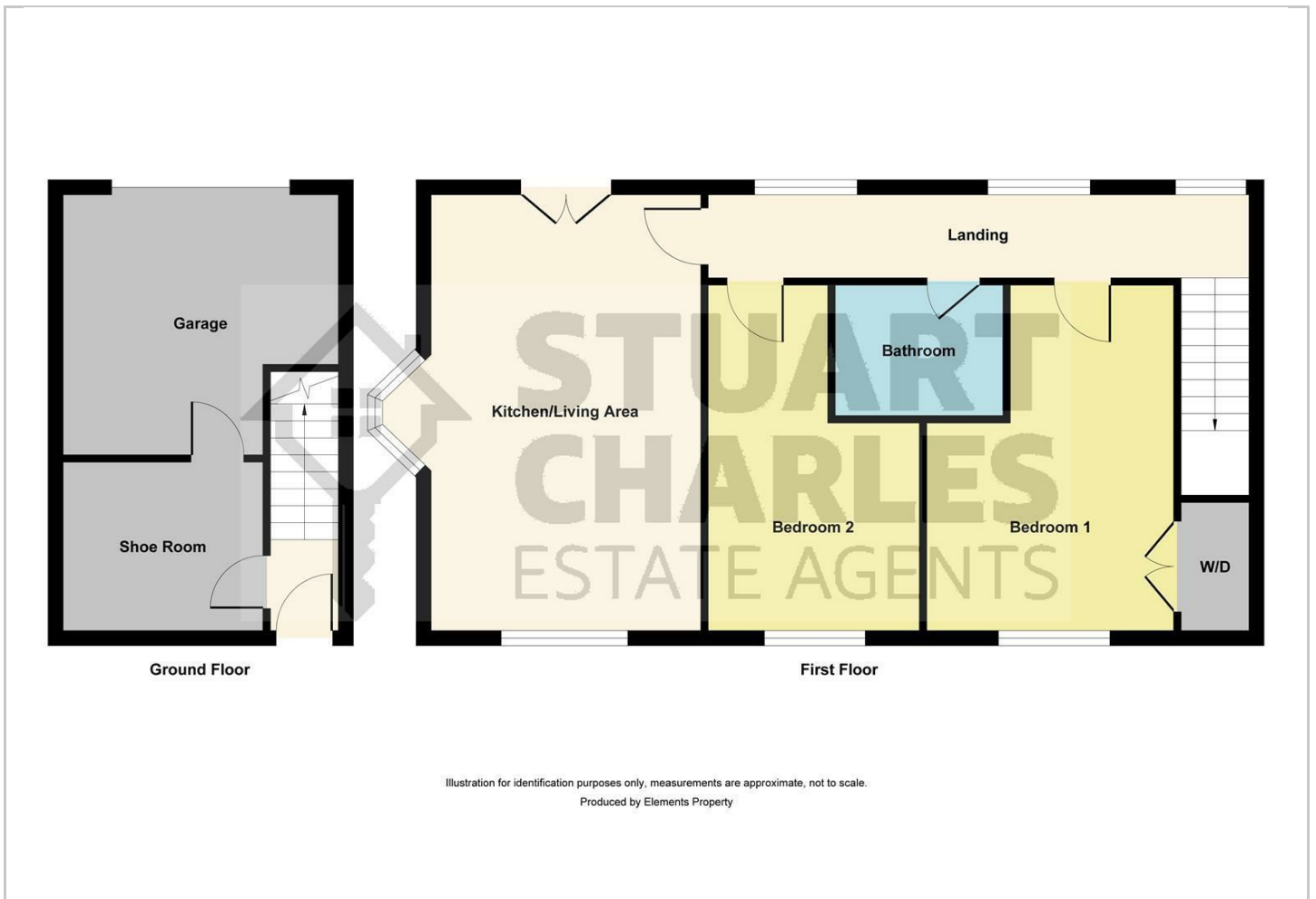
## Hybrid Map



## Terrain Map



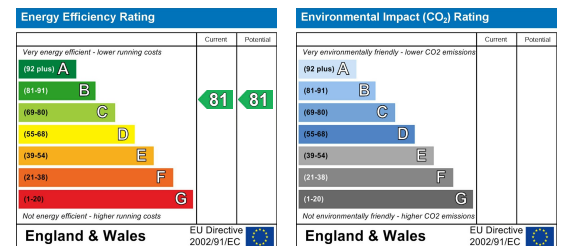
## Floor Plan



## Viewing

Please contact our Stuart Charles Estate Agents Office on 01536 234264 if you wish to arrange a viewing appointment for this property or require further information.

## Energy Efficiency Graph



These particulars, whilst believed to be accurate are set out as a general outline only for guidance and do not constitute any part of an offer or contract. Intending purchasers should not rely on them as statements of representation of fact, but must satisfy themselves by inspection or otherwise as to their accuracy. No person in this firm's employment has the authority to make or give any representation or warranty in respect of the property.