



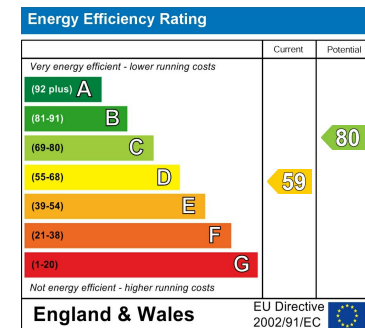
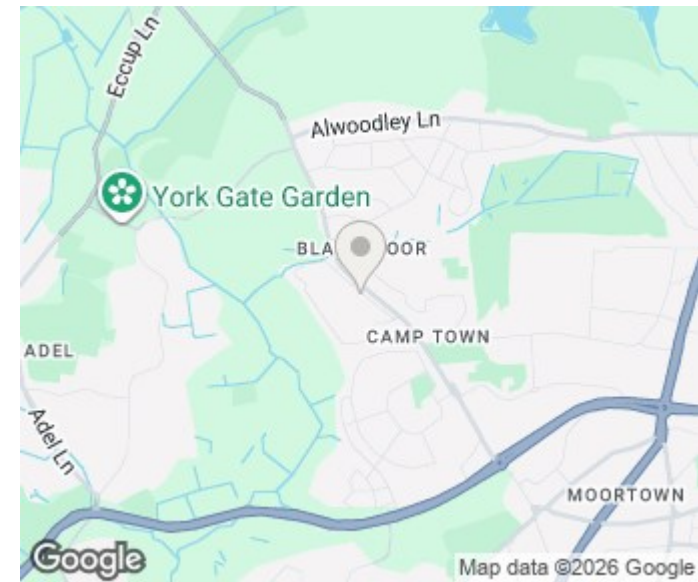
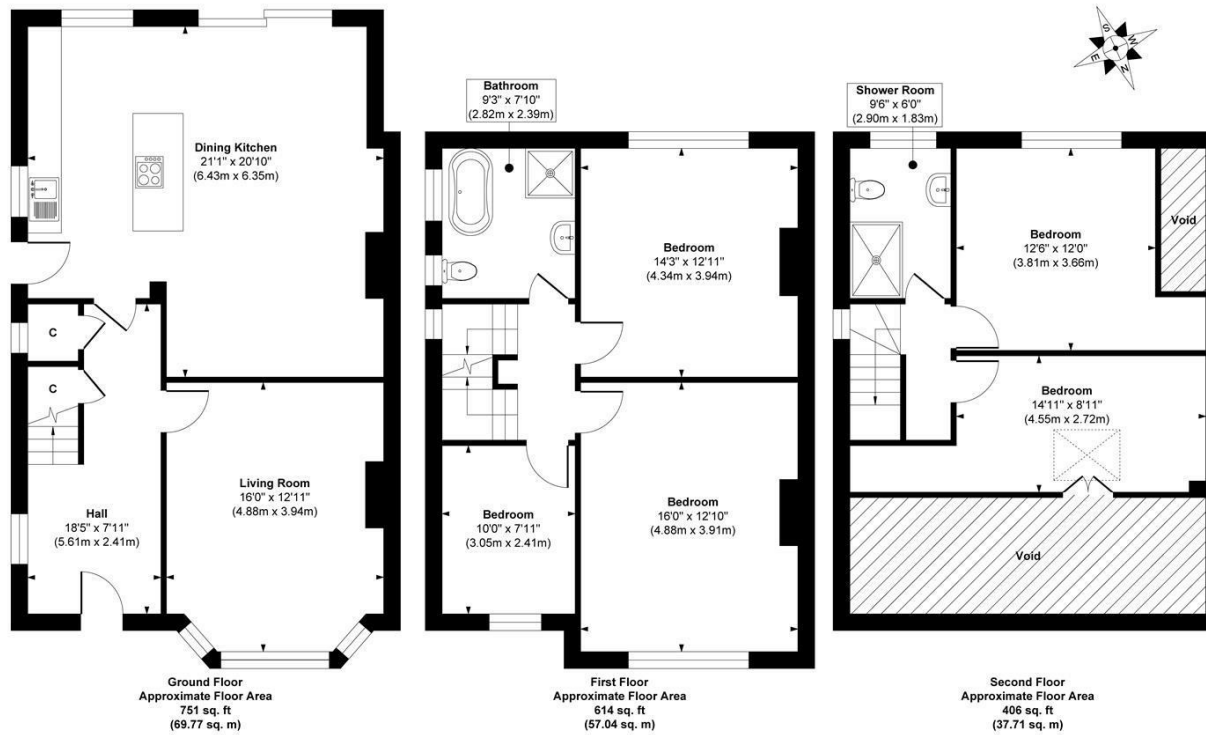
565 KING LANE
LEEDS, LS17 5EH

£575,000
FREEHOLD

Monroe is thrilled to bring to market King Lane. Located in the amenity rich North Leeds suburb of Alwoodley, renowned for its high quality of life, this gorgeous five-bedroom family home is situated on a fantastic street and offers more than 1770 square feet of living space.

MONROE

SELLERS OF THE FINEST HOMES



Approx. Gross Internal Floor Area 1771 sq. ft / 164.52 sq. m
 Illustration for identification purposes only, measurements are approximate, not to scale.
 Copyright © Zenith Creations.

Agents Note: Whilst every care has been taken to prepare these particulars, they are for guidance purposes only. All measurements are approximate and are for general guidance purposes only and whilst every care has been taken to ensure their accuracy, they should not be relied upon and potential buyers/tenants are advised to recheck the measurements

Alwoodley Sales
 716 King Lane Alwoodley
 Leeds
 West Yorkshire
 LS17 7BA

0113 870 4443
 hello@monroestateagents.com
 www.monroestateagents.com

MONROE

SELLERS OF THE FINEST HOMES