



Snatchwood Road

Guide Price £120,000 - £130,000

- No Chain
- Perfect for first-time buyers or investors
- Split over three floors, offering versatile living space
- Convenient location close to local schools, shops, and amenities
- Rear garden with side access
- Outdoor shed providing useful outdoor space and storage
- EPC Rating: D



Pinkmove

01633 746088
team@pinkmove.co.uk



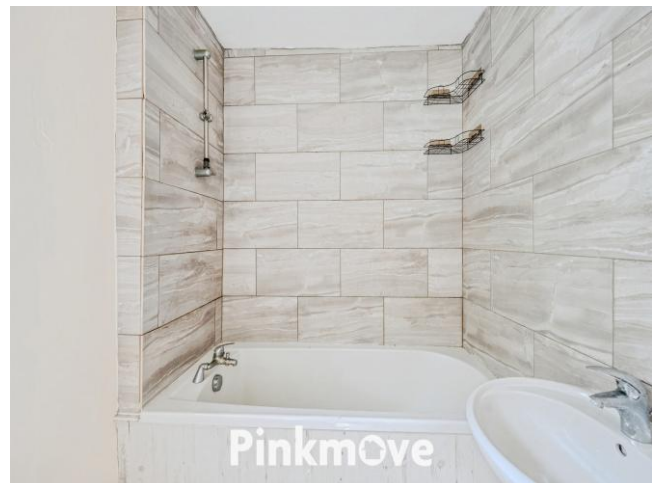
About the property

We are pleased to present this no chain property, ideal for a first-time buyer or investor, situated in the popular area of Abersychan. The property benefits from a convenient location close to local schools, shops, and amenities.

Externally, the property offers side access and a rear garden complete with a built shed, providing useful outdoor storage and space.

Upon entering the property, you are welcomed directly into the lounge, with stairs leading to the first floor, where you'll find two bedrooms and the main family bathroom. Returning to the ground floor, a further staircase leads down to the basement level, which offers a spacious kitchen/dining area along with a useful storage cellar. From here, there is access to the rear garden and a communal pathway.

The property has recently been refreshed, making it ready for sale and a great opportunity for buyers looking to move straight in or invest.





Accommodation

Living Room

Kitchen

Store Room

Bedroom 1

Bedroom 2

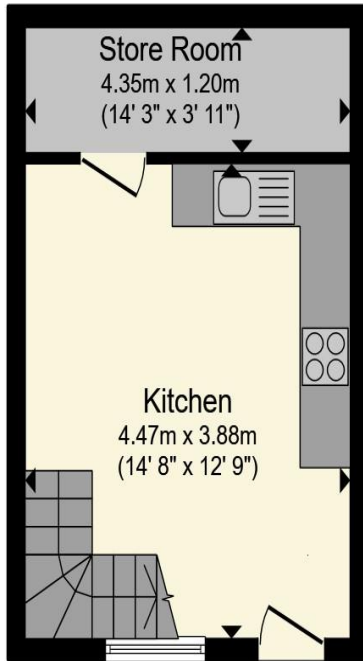
Bathroom

01633 746088

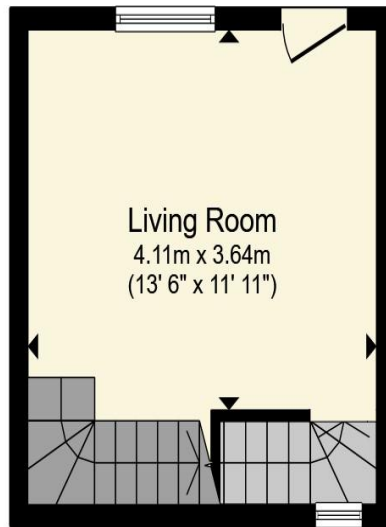
team@pinkmove.co.uk

Pinkmove

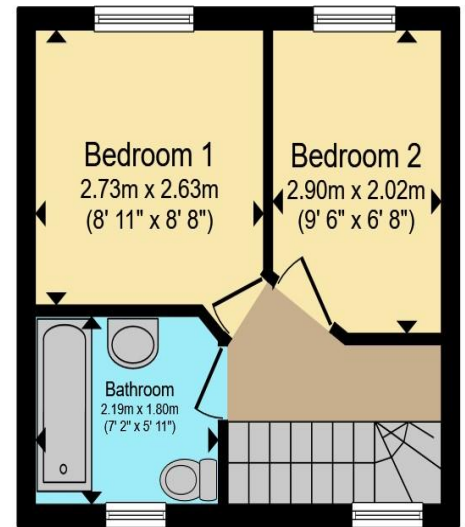
Floorplan



Basement



Ground Floor



First Floor

Total floor area 63.4 sq.m. (683 sq.ft.) approx

This floor plan is for illustrative purposes only. It is not drawn to scale. Any measurements, floor areas (including any total floor area), openings and orientation are approximate. No details are guaranteed, they cannot be relied upon for any purpose and they do not form part of any agreement. No liability is taken for any error, omission or misstatement. A party must rely upon its own inspection(s). Powered by www.focalagent.com

Pinkmove

Important Information

Note while we endeavour to make our sales details accurate and reliable, if there is any point which is of particular interest to you, please contact the office and we will be pleased to confirm the position for you. We have not personally tested any apparatus, equipment, fixtures, fittings or services and cannot verify they are in working order or fit for their purposes. Nothing in these particulars is intended to indicate that carpets or curtains, furnishings or fittings, electrical goods (whether wired or not). Gas fires or light fittings or any other fixtures not expressly included form part of the property offered for sale. This computer generated Floorplan, if applicable, is intended as a general guide to the layout and design of the property. It is not to scale and should not be relied upon for dimensions. Tenure: We cannot confirm the tenure of the property as we have not had access to the legal documents. The buyer is advised to obtain verification from their solicitor or surveyor.

Peter Alan Limited is registered in England and Wales under company number 2073153. Registered Office is Cumbria House, 16-20 Hockliffe Street, Leighton Buzzard, Bedfordshire, LU7 1GN. VAT Registration Number is 500 2481 05. For activities relating to regulated mortgages and non-investment insurance contracts, Peter Alan Limited is an appointed representative of Connells Limited which is authorised and regulated by the Financial Conduct Authority. Connells Limited's Financial Services Register number is 302221. Most buy-to-let

