



**Ridgeways Cannongate Road, Hythe - CT21 5PX**

Guide Price **£315,000**

Approximate Gross Internal Area (Excluding Garage) = 77 sq m / 826 sq ft

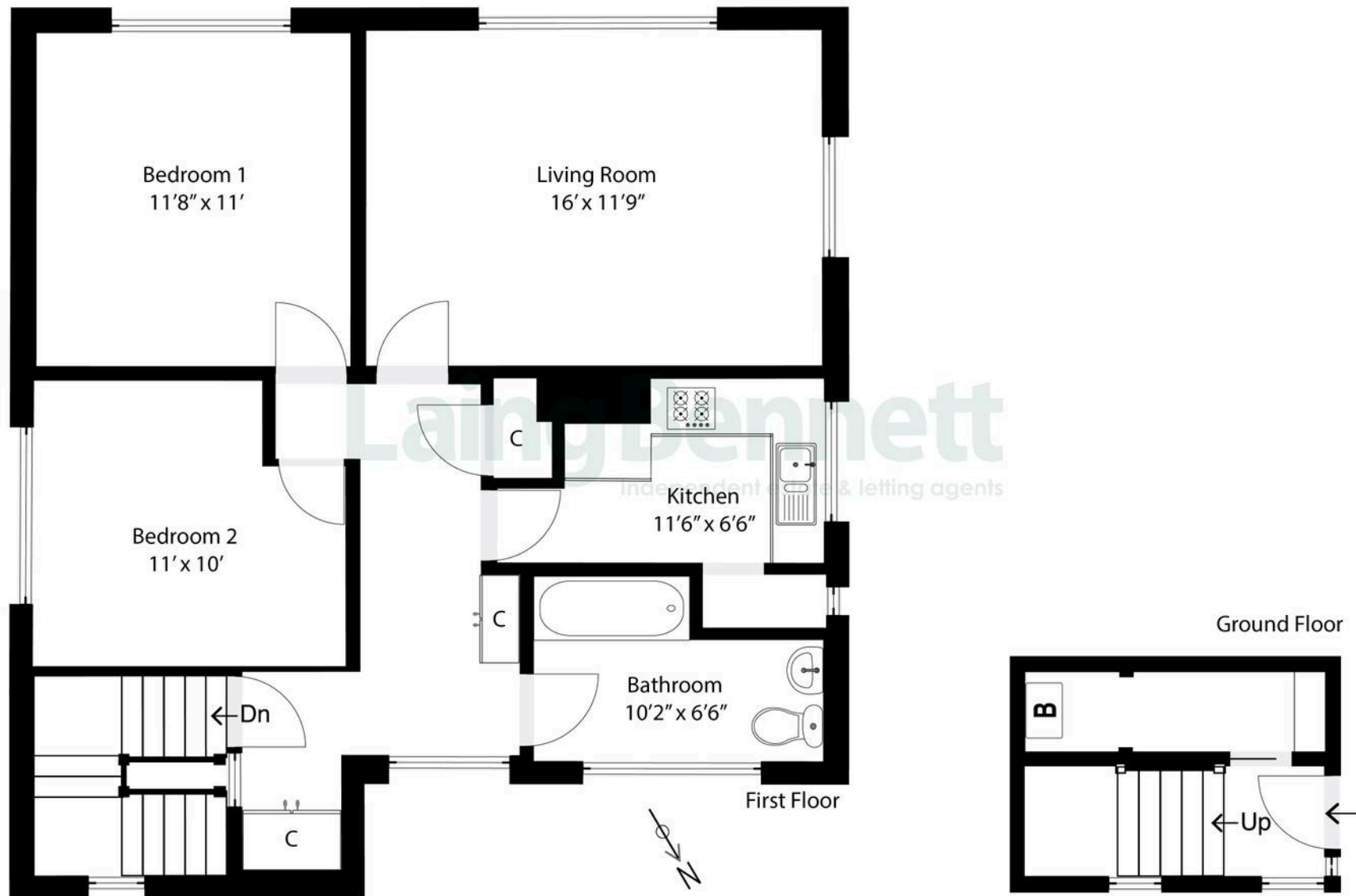


Illustration for Identification purposes only. Measurements are approximate. Dimensions given are between the widest points.  
Not to scale. Outbuildings are not shown in actual location.  
© Unauthorised reproduction prohibited - chriskemps@hotmail.com



## Ridgeways Cannongate Road

Hythe, Hythe

This delightful first floor apartment boasts its own private entrance, leading to a welcoming hallway and spacious first floor landing. The well-proportioned living/dining room offers panoramic sea views, creating a perfect space to relax or entertain. The property features a modern kitchen, two generously sized double bedrooms, and a well-appointed bathroom. Outside, there is a garden area to the front and the convenience of off-road parking and useful shed area. A fantastic opportunity to enjoy coastal living in a beautifully positioned home.

Council Tax band: C

Tenure: Leasehold

EPC Energy Efficiency Rating: D

EPC Environmental Impact Rating: D



## Laing Bennett

Laing Bennett Ltd, The Estate Office, 8 Station Road – CT18 8HP

01303 863393

[info@laingbennett.co.uk](mailto:info@laingbennett.co.uk)

[www.laingbennett.co.uk/](http://www.laingbennett.co.uk/)

DISCLAIMER – These details are for guidance only and do not form part of an offer or contract. Measurements are approximate. Laing Bennett Ltd and the Vendor/Landlord accept no liability. Services and appliances are untested. Applicants must make their own checks. Items shown may not be included. No staff have authority to give warranties.